

SAVE THIS
for your reference
throughout the season

TimeLine
Theatre Company

2018-19 SUBSCRIBER HANDBOOK

HOW YOUR SUBSCRIPTION WORKS

True to its name, your TimeLine FlexPass is incredibly flexible. Each of your admissions may be redeemed for a ticket to the performance of your choice during the season, and admissions may be used in any combination. Most often, one person will use their admissions to see each play once, but other combinations are possible and allowed.

Read more inside to learn all about your FlexPass Subscription ...

RECORD YOUR RESERVATION

Your subscription is flexible, but you can use this space to remember which dates you've decided to attend each show after receiving confirmation from the Box Office.

A SHAYNA MAIDEL

Aug. 22, 2018 - Nov. 4, 2018

MASTER CLASS

Oct. 19, 2018 - Dec. 9, 2018
(presented at Stage 773)

CARDBOARD PIANO

Jan. 9, 2019 - Mar. 17, 2019

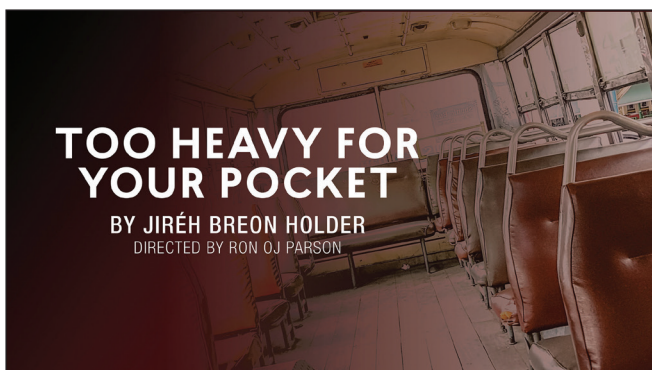
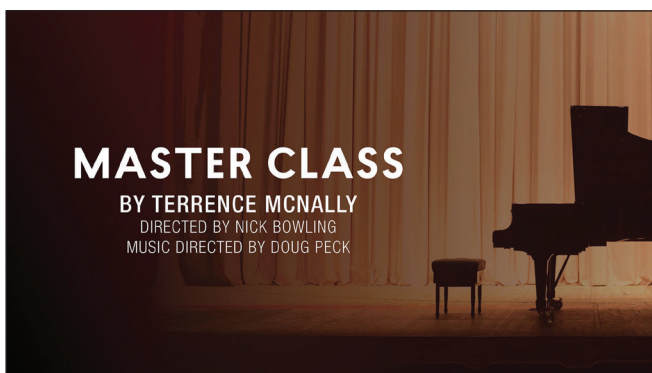
**TOO HEAVY FOR
YOUR POCKET**

Apr. 24, 2019 - Jun. 29, 2019

THANK YOU FOR SUBSCRIBING!

By joining us as a subscriber, you are playing a vital role in helping TimeLine produce our unique style of plays that connect yesterday's stories with the social and political issues of today. **We greatly appreciate your support!**

Your FlexPass is valid for these plays during our
2018-2019 Season:



INSIDE THIS HANDBOOK

- 1 Record your Reservation
- 3 Know your FlexPass & Information about Ticket Availability
- 4 How to Make a Reservation & FlexPass Policies
- 5 Accessibility
- 6 Frequently Asked Questions
- 7 Performance Schedule
- 8 Map/Parking & Neighborhood Dining

If at any time you have questions or comments about your subscription, please contact us:

773.281.TIME (8463) x6
boxoffice@timelinetheatre.com

BOX OFFICE HOURS

Monday — Closed
Tuesday — 12 pm - 5 pm
Wednesday — 12 pm - 5 pm (8 pm*)
Thursday — 12 pm - 5 pm (8 pm*)
Friday — 12 pm - 5 pm (8:30 pm*)
Saturday* — 12 pm - 8:30 pm
Sunday* — 12 pm - 2:30 pm

* performance dates only

If we miss your call during Box Office hours, please leave a message and we will get back to you at our next opportunity.

We encourage you to visit and bookmark our website
timelinetheatre.com

Regular online updates keep you informed about performance schedules and production information; special events; video previews; reviews; other resources related to the plays; directions, parking and dining information; and much more!



KNOW YOUR FLEXPASS

Here is a quick guide to understanding the perks of your FlexPass

FlexPass Options:	PREMIUM FlexPass	ANYTIME FlexPass	WEEKDAY FlexPass	PREVIEW FlexPass
Use your FlexPass for tickets to:	Any Performance	Any Performance	Wednesday, Thursday, and Friday performances	Previews only
Your ticket availability is:	<i>GUARANTEED</i> if booked before the final 2 weeks of a production <i>PRIORITY ACCESS</i> if booked during the final 2 weeks of a production	<i>GUARANTEED</i> if booked before Opening Night <i>PRIORITY ACCESS</i> if booked after Opening Night <i>LIMITED</i> if booked during the final 2 weeks of a production		<i>GUARANTEED</i> if booked before the first preview <i>PRIORITY ACCESS</i> if booked after the first preview <i>LIMITED</i> if booked during the final 2 weeks of a production
You can exchange your tickets:	Unlimited free exchanges	Two free exchanges per production; extra exchanges available at additional cost of \$5 per ticket		
If exchanging to another date, you pay ticket upgrade costs:	Never	Never	When exchanging to a Saturday or Sunday performance	When exchanging to any regular run performance

IMPORTANT INFORMATION ABOUT TICKET AVAILABILITY

While subscribers do get priority when making reservations and we hold back tickets from public sale to accommodate you, **subscriber reservations are subject to availability**. Space for each performance is limited and tickets may sell out. We strongly recommend that you make reservations as early as possible for best availability. Tickets will get progressively more limited during the course of a run.

- **Guaranteed ticket availability:** TimeLine guarantees you a ticket to see the production but does not guarantee availability of first-choice dates. While we will always make every effort to accommodate your first-choice dates, we encourage our FlexPass subscribers to have second- and third-choice dates available when booking reservations.
- **Priority ticket availability:** TimeLine will make every effort to provide a ticket to see the production, including holding a limited number of tickets back from public sale to accommodate subscribers, but availability will become progressively more limited during the course of each production run.
- **Limited ticket availability:** TimeLine will make every effort to provide a ticket to see the production, but during the final 2 weeks of each run, flexibility of dates will be limited. FlexPass holders who reserve or attempt to exchange in the final 2 weeks of the run risk forfeiting their opportunity to see that production. Unused admissions may be redeemed at future productions within the 2018-2019 season but are not eligible for refund.

! REMEMBER
Any tickets that had been held back for use by subscribers will be released for public sale 48 hours prior to each performance.

RESTRICTIONS / EXPIRATION

Your 2018-2019 TimeLine FlexPass is good only for performances of our four-play subscription season, as published in this Handbook, and expires on June 29, 2019. Other off-night productions, special events, play readings or extension performances of a season play are not included and may involve an additional cost to attend. All sales are final. No redeemable cash value. There are no refunds for any unused admissions. Please see our Frequently Asked Questions for more information.

HOW TO MAKE A RESERVATION

- 1 Consult our Performance Calendar featuring the complete 2018-2019 schedule, printed in this Handbook, to determine which date/time you would like to see a particular show. We will send you individual production schedules as reminders throughout the season. You may also visit timelinetheatre.com for performance schedule information.
- 2 Call the TimeLine Box Office at 773.281.8463 x6 or request reservations via our online form at timelinetheatre.com/flexpass-reservations. *Here's what we need to know when you make your reservation:*
 - The name under which your FlexPass Subscription was purchased.
 - The performance date and time you are requesting. It is helpful to have alternate dates available, just in case.
 - The number of FlexPass admissions you plan to use.
 - (If applicable) The number of additional tickets you want to purchase (see Bring-a-Friend Discount below). If you are reserving additional tickets, we require payment in advance via Visa, Mastercard, Discover or American Express.
 - A phone number and/or email where we may confirm your reservation.
- 3 TimeLine is a ticketless theater. Your reservations are held in our database so that when you arrive at the theater for the performance, your name will appear on our check-in list. Just give us your last name when you check in — we will note your attendance and give you programs that serve as your tickets. Our database is updated to reflect the total number of FlexPass admissions you have used and how many you have remaining.

! MAKE THE MOST OF YOUR FLEXPASS

You don't have to wait to make a reservation! Subscribers can reserve for the entire season at any time.

Try to have 2-3 potential dates you could attend in mind whenever you contact us to make your reservations.

If you traditionally attend with a larger group of subscribers (5 or more people), or if you plan to invite non-subscriber friends to attend with you, it is particularly helpful to organize the group and secure your date early.

If you have to cancel, please reschedule as soon as you can: the closer we get to the closing date for a production, the harder it is to find availability.

PERK ALERT!

BRING-A-FRIEND DISCOUNT

Subscribers may purchase additional tickets for \$10 OFF regular price

Our plays raise timely and timeless issues to talk about, and your Bring-a-Friend discount allows you to invite others with you so they can join the conversation. To purchase additional tickets using your Bring-a-Friend discount, you may call the Box Office at 773.281.8463 x6 or make a request via timelinetheatre.com/flexpass-reservations. Tickets are subject to availability. We require payment in advance via Visa, MasterCard, Discover, or American Express.

SEATING

Seating is general admission and the theater is opened approximately 30 minutes prior to curtain. We encourage you and your guests to arrive at the theater and claim your tickets at least 15 minutes prior to the start of the performance, to help ensure that your party can be seated together at sold out shows.

TICKET RELEASE & NO LATE SEATING

Because our theater is small and often every seat is needed, any unclaimed tickets may be released to patrons on our waiting list starting 5 minutes prior to curtain time. Please note that due to the configuration of the theater, we have instituted a no-late-seating policy. Latecomers will not be seated.

EXCHANGES & CANCELLATIONS

If you need to cancel or change your selected dates, we are happy to reschedule you, subject to availability. Please make exchanges and/or cancellations at least 24 hours prior to your scheduled performance. We appreciate the courtesy of knowing when seats have become available for other patrons who may request them. Unused admissions may be redeemed at future productions within the 2018-2019 season but are not eligible for refund. Please see our Frequently Asked Questions for more information.

ANYTIME, WEEKDAY, and PREVIEW FlexPass holders may make up to 2 free exchanges per production; additional exchanges cost a \$5 fee per ticket. Unused exchanges from one production may not be used for subsequent productions. PREMIUM FlexPass holders enjoy unlimited free exchanges.

BACKSTORY & OTHER PERKS

You'll receive *Backstory*, our magazine with historical background, artist interviews and more, prior to the opening of each production. *Backstory* is delivered by mail, email or in person, based on your recorded preference.

You'll also receive news and information via email, invitations to special events, exclusive early access to tickets for additional productions and play readings, and offers from our neighborhood partners.

ACCESSIBILITY

Wheelchair Lifts — Our theatre on Wellington Avenue features two wheelchair lifts that make the theatre space and restroom level accessible to wheelchair users and visitors who need to avoid stairs. Stage 773 is wheelchair accessible.

Assistive Listening Devices — TimeLine offers RF assistive listening devices for those who request them. To check out a listening device, ask the Box Office when you arrive and provide an ID.

Captioned Performances — Open captioning is a text display of words and sounds heard during the performance. The display is positioned in such a way that it is open for anyone to see in a particular seating area. See the Performance Calendar for specific dates.

Accessible Seating for Performances — Although seating for performances is general admission, accessible seats may be requested for patrons who need specific seating due to disability. If you require accessible seating, please let us know when you place your reservation how we may assist you in finding the best seats to fit your needs. You may request special reserved seat locations based on your preferences by providing these codes in the order comment box:

- **TRANSFER:** Use this code if you wish to transfer to a seat from your walker, wheelchair or scooter.
- **REMOVAL:** Use this code if you require a location where a seat can be removed for you to stay in your wheelchair or scooter while you watch the performance.
- **NOSTAIRS:** Use this code if you require a location where there are no stairs between you and your seats.

NOTE: There are a limited number of accessible seats per performance and we cannot guarantee that larger parties will all be seated in the same row. **Reserved accessible seating will be released to other patrons if not claimed by 10 minutes prior to curtain.**

Please visit timelinetheatre.com/accessibility for further information about accessibility.



MAKE THE MOST OF YOUR FLEXPASS

A major perk of a FlexPass subscription is that **YOU MAY USE YOUR ADMISSIONS AS YOU CHOOSE IN ANY COMBINATION.** For example, if you purchased one 4-Admission FlexPass you could use your 4 admissions in the following combinations:

- 1 ticket to each of the four productions
- 2 tickets to two productions
- 3 tickets to one production + 1 ticket to another production
- 4 tickets to one production

FREQUENTLY ASKED QUESTIONS

What happens if I miss my scheduled performance?

You may reschedule for a future performance, subject to availability, or save your admission(s) and use them to bring a friend to another production during the season. We request a minimum of 24 hours notice if you find you are unable to use reserved tickets.

If I am unable to attend a production, what happens to my admissions?

Your admissions will remain valid through their expiration date of June 29, 2019. You may give them to a family member or friend, or bring guests to remaining productions.

If I don't use all of my FlexPass admissions this season, can I use my remaining admissions next season?

No. Your 2018-2019 FlexPass subscription is valid only during the current season and expires on June 29, 2019. Unused admissions cannot be transferred to the next season.

Can I convert any unused admissions into a donation to the theatre?

No. Due to the structure of a FlexPass subscription, admissions have no redeemable cash value, therefore we cannot turn admissions into a donation for tax credit. If you are unable to use your admissions, we recommend inviting a friend or family member to use them.

How can I find out how many admissions I have left?

Call the Box Office at 773.281.8463 x6 or email us at boxoffice@timelinetheatre.com and we'd be happy to let you know how many admissions you have left.

Why does my FlexPass subscription have an expiration date?

Your FlexPass is valid only during the 2018-2019 season and so expires on the closing date of the final production of the season.

How will I know when a show is opening?

Our 2018-2019 Performance Calendar is included in this Handbook and schedules are available online at timelinetheatre.com. Also, you will receive a production flyer and *Backstory* prior to each show opening. If you have not made your reservations for the production by the reservation deadline, our Box Office staff will call to remind you.

Can I reserve tickets online?

Yes! You may request reservations online by filling out and submitting the form at timelinetheatre.com/flexpass-reservations. You will receive an email confirmation from our Box Office within 48 hours. However, if the performance you wish to attend is the same day you wish to place your request, please call our Box Office at 773.281.8463 x6 instead.

What happens if the production is sold out?

Many times when you hear that a production is sold out, we no longer have tickets for public sale, but we may have tickets available just for our subscribers. Due to space limitations, subscriber reservations are still subject to availability and may sell out as well. And remember, any seats held back for subscribers will be released for public sale 48 hours prior to each performance. We make every effort to remind you to make reservations before seating becomes limited. To ensure the best availability of dates, we strongly recommend making your reservations as early as possible.

If the performance I want to attend is really sold out, can I sign up for a wait list?

Starting one hour prior to a sold-out performance, our Box Office staff will begin a wait list. At curtain time, in the event of last-minute cancellations or no-shows, and at the discretion of house management, seats may be released and given to those on the waiting list with priority given to current subscribers. We do not take wait list names over the phone; you must arrive in person to sign up. We cannot guarantee that seats will become available, but we will do our best to accommodate you.

What if I am late to a show?

Due to our intimate setting, latecomers will not be seated. Please allow ample time for travel, dining and parking when attending your performance. If you are late, you will be asked to wait until intermission to be seated. Otherwise, you may reschedule your performance with the Box Office.

2018-19 PERFORMANCE SCHEDULE



SHOWTIMES

Previews 8 pm (except 2 pm on 8/26, 10/21, 1/13 & 4/28; and 7:30 pm on 8/28, 8/29, 1/15, 1/16, 4/30 & 5/1)
 Opening Nights 7:30 pm Tuesdays, Wednesdays & Thursdays 7:30 pm (except 8:30 pm on 3/6, also 2 pm on 9/20)
 Fridays 8 pm (also 4 pm on 11/23) Saturdays 4 pm & 8 pm (except no 4 pm on 9/1, 10/27, 1/19 & 5/4) Sundays 2 pm

CALENDAR KEY

- Regular Performance
- Preview Performance
- Opening Night **SOLD OUT**

Post-Show Discussion
 After this performance, stay for a brief, informal discussion hosted by a TimeLine Company Member and featuring the production dramaturg and members of the cast. **FREE**

Pre-Show Discussion
 Starting one hour before this performance, come early for a 30-minute introductory conversation hosted by a TimeLine Company Member and the production dramaturg. **FREE**

Sunday Scholars Panel
 A one-hour panel discussion featuring experts on the themes and issues of the play. **FREE**

Company Member Discussion
 A post-show conversation with TimeLine's Company Members. **FREE**

Captioned Performance
 The 4 pm performance on this date will be open captioned, with a text display of words and sounds heard during the performance.

A SHAYNA MAIDEL

by Barbara Lebow
 directed by Vanessa Stalling

August 30 - November 4, 2018
 previews 8/22 - 8/29

presented at TimeLine Theatre
 615 W. Wellington Avenue

Shortly before World War II, Rose Weiss and her father escaped Poland for America, but were forced to leave Rose's sister Lusie and her mother behind. When the two sisters—now strangers—reunite in New York City many years later, they are uncertain about how to connect. This powerful and poignant drama explores family, faith, and forgiveness in the pursuit of a better future.

AUGUST 2018

Su	M	T	W	Th	F	Sa
			22	23	24	25
26	27	28	29	30	31	

SEPTEMBER 2018

Su	M	T	W	Th	F	Sa
						1
2	3	4	5	6	7	8
9	10	11	12	13	14	15
16	17	18	19	20	21	22
23	24	25	26	27	28	29
30						

OCTOBER 2018

Su	M	T	W	Th	F	Sa
	1	2	3	4	5	6
7	8	9	10	11	12	13
14	15	16	17	18	19	20
21	22	23	24	25	26	27
28	29	30	31			

NOVEMBER 2018

Su	M	T	W	Th	F	Sa
				1	2	3
4						

MASTER CLASS

by Terrence McNally
 directed by Nick Bowling
 music directed by Doug Peck

October 25 - December 9, 2018
 previews 10/19 - 10/24

presented at Stage 773
 1225 W. Belmont Avenue

Witness a master class conducted by legendary opera diva Maria Callas. Glamorous, demanding, and unapologetically herself, Callas critiques and regales a new crop of opera's finest. Both frustrated and amazed by the students thrust before her, she escapes into recollections of the glories and failures of her past, remembering her rise as one of opera's biggest underdogs. This authentic and musically rich *Master Class* presents a portrait of a faded star who refuses to be anything but the indomitable woman she once was.

OCTOBER 2018

Su	M	T	W	Th	F	Sa
					19	20
21	22	23	24	25	26	27
28	29	30	31			

NOVEMBER 2018

Su	M	T	W	Th	F	Sa
					1	2
3	4	5	6	7	8	9
10	11	12	13	14	15	16
17	18	19	20	21	22	23
24	25	26	27	28	29	30

DECEMBER 2018

Su	M	T	W	Th	F	Sa
						1
2	3	4	5	6	8	9
10						

Chicago Premiere

CARDBOARD PIANO

by Hansol Jung
 directed by Mechelle Moe

January 17 - March 17, 2019
 previews 1/9 - 1/16

presented at TimeLine Theatre
 615 W. Wellington Avenue

At the dawn of the millennium in a darkened church in northern Uganda, the daughter of American missionaries and a local teenage girl prepare to exchange vows in a secret, makeshift wedding ceremony. But when the brutality of the war zone around them encroaches on their fragile union, the two are faced with a reality they cannot escape. Confronting the religious and cultural roots of intolerance, *Cardboard Piano* explores violence and its aftermath, as well as the human capacity for hatred, forgiveness, and love.

JANUARY 2019

Su	M	T	W	Th	F	Sa
			9	10	11	12
13	14	15	16	17	18	19
20	21	22	23	24	25	26
27	28	29	30	31		

FEBRUARY 2019

Su	M	T	W	Th	F	Sa
					1	2
3	4	5	6	7	8	9
10	11	12	13	14	15	16
17	18	19	20	21	22	23
24	25	26	27	28		

MARCH 2019

Su	M	T	W	Th	F	Sa
					1	2
3	4	5	6	7	8	9
10	11	12	13	14	15	16
17						

Chicago Premiere

TOO HEAVY FOR YOUR POCKET

by Jeré Breon Holder
 directed by Ron OJ Parson

May 2 - June 29, 2019
 previews 4/24 - 5/1

presented at TimeLine Theatre
 615 W. Wellington Avenue

Bowzie Brandon, his wife Sally, and their best friends Tony and Evelyn see happiness on the horizon when Bowzie gets a scholarship to attend college and improve his family's life. However, when the opportunity to become a Freedom Rider arises, Bowzie leaves his obligations as a husband and friend behind to join the fight against racism in the Deep South. *Too Heavy for Your Pocket* is a powerful look at the tenuous balance between security and risk, the bonds of love and friendship, and the personal cost of progress.

APRIL 2019

Su	M	T	W	Th	F	Sa
			24	25	26	27
28	29	30				

MAY 2019

Su	M	T	W	Th	F	Sa
			1	2	3	4
5	6	7	8	9	10	11
12	13	14	15	16	17	18
19	20	21	22	23	24	25
26	27	28	29	30	31	

JUNE 2019

Su	M	T	W	Th	F	Sa
						1
2	3	4	5	6	8	9
10	11	12	13	14	15	
16	17	18	19	20	21	22
23	24	25	26	27	28	29

MAP AND PARKING



Stage 773 is located at 1225 W. Belmont Ave., near the corner of Belmont and Racine.



TimeLine Theatre is located at 615 W. Wellington Ave., near the corner of Wellington and Broadway.

NEIGHBORHOOD DINING

TimeLine's Lakeview East neighborhood offers an extremely wide variety of restaurants within walking distance, far too many to list here! You can visit our website (timelinetheatre.com) for a more detailed list—including discount offers (some exclusive for TimeLine subscribers)—as well as the Lakeview East Chamber of Commerce (lakevieweast.com), but here are a few that we recommend. [Review current local dining offers at timelinetheatre.com/dining.](http://timelinetheatre.com/dining)



3107 N. Broadway
773.477.0300
Traditional deli favorites



3201 N. Halsted
773.244.9191
Cozy, elegant American fare and amazing martinis

P6 **PARKING OFFER AT THE BAGEL** Free theater parking with meal. Park in The Bagel lot, identify yourself as a TimeLine subscriber, spend \$10 or more per person and stay parked during the show. Be sure to inform restaurant management that you are seeing a TimeLine show and register your car to confirm parking arrangements.

EXCLUSIVE OFFER AT DREW'S: Mention you are a TimeLine Subscriber and receive 15% off or access to prix fixe \$25 dinner menu or \$16 brunch menu (reservations required for prix fixe).



3155 N. Broadway
773.857.3155
Neighborhood craft brewery and kitchen



2947 N Broadway
773.472.4781
Artisan cheese, bread, wine and charcuterie



2914 N. Clark
773.528.2131
Authentic Mexican cuisine



2951 N. Broadway
773.880.7372
Homemade ice cream & coffee



3130 N. Broadway
773.244.0404
Upscale pub food with an Irish flair



3124 N. Broadway
773.922.4020
Regional Italian cuisine

PLUS:



wineHouse

3164 N. Broadway
872.802.3766
Boutique wine shop



3023 N. Broadway
773.296.6901
Mexican shared plates with a farm fresh twist

For more details and discount offers, visit timelinetheatre.com. Restaurants and shops are not affiliated with TimeLine. All dining offers are subject to change. Details as of June 2018.



Both TimeLine Theatre and Stage 773 are easily accessible via the CTA.

TimeLine is closest to the Belmont stop on the Red Line and the Wellington and Belmont stops on the Brown and Purple lines. Buses #36, #151, #8 and #22 stop at or near Wellington.

Stage 773 is closest to the Belmont stop on the Red, Brown and Purple lines. Bus #77 stops at Racine.

PARKING OPTIONS

AT TIMELINE THEATRE:



LAZ Parking

3116 N. Broadway (3 minute walk)
Small self-park surface lot with driveway entrance and automated pay station.
1-5 hours for \$7; 5-8 hours for \$11

TimeLine partners with Standard Parking to offer discounted parking at:



Broadway at Surf Public Parking

2846 N. Broadway (4 minute walk)
Roof-top self-park lot, well-lit with elevators; closes at midnight.



Century Shopping Plaza Parking

2836 N. Clark (7 minute walk)
Self-park garage with several floors of parking, open 24 hours.

Discount price: \$8 (at Broadway/Surf) or \$9 (at Century) for up to 6 hours, with validation obtained at the Box Office.



Illinois Masonic Visitors Parking Lots

3000 N. Halsted (5 minute walk)
836 W. Wellington (7 minute walk)
Covered self-park garages adjoining the hospital, open 24 hours.
2-4 hours for \$12; 4-6 hours for \$14

Free or metered street parking is very limited, but possible. Allow extra time & beware of neighborhood permit laws!

Taxicabs are usually plentiful.

Other parking options: See The Bagel Dining & Parking Package at left.



AT STAGE 773:

Valet parking (\$12) is available.

Limited free or metered street parking is available. There is also parking at the Northwestern Building, 1333 W. Belmont, and at a metered parking lot located at Belmont and Greenview.

Taxicabs are usually plentiful.

For up-to-date parking details for both venues, visit timelinetheatre.com.

Parking facilities are not affiliated with TimeLine. Hours, prices and availability are subject to change. Details as of June 2018.