



EXPLORING TODAY THROUGH THE LENS OF THE PAST

Artistic Director **PJ Powers** | Executive Director **Mica Cole**

CHICAGO PREMIERE

# AN ENEMY OF THE PEOPLE

BY **HENRIK IBSEN**

A NEW VERSION BY **AMY HERZOG**

DIRECTED BY **RON OJ PARSON, SDC+**

Scenic Designer **John Culbert, USA**

Costume Designer **Christine Pascual, USA**

Lighting Designer **Brandon Wardell, USA**

Sound Designer **André Pluess, USA**

Properties Designer **Nicolas Bartleson**

Dramaturg **Maren Robinson+**

Stage Manager **Olivia Sullam\***

Featuring **Will Allan\*\***, **Charles Andrew Gardner\*\***, **Kenneth Hamilton\***,  
**Anish Jethmalani\*\***, **Behzad Dabu+**, **Grayson Kennedy**,  
**Campbell Krausen**, and **David Parkes+**

**MAY 14 – JUNE 7, 2026 (PREVIEWS 5/6 – 5/13)**

*An Enemy of the People* is presented by arrangement with Concord Theatricals  
on behalf of Samuel French, Inc., [www.concordtheatricals.com](http://www.concordtheatricals.com)

Original Broadway production produced by SEAVIEW PATRICK CATULLO PLAN B,  
Roth-Manella Productions, Eric & Marsi Gardiner, John Gore Organization, James L. Niederlander,  
Jon B. Platt, Atekwanna Hutton, Bob Boyett, Chris & Ashlee Clarke, Cohen-Demar Productions,  
Andrew Diamond, Gig Productions, Sony Music Masterworks, Triptyk Studios, Trunfio,  
Ryan Kate Cannova, and DJL Productions



The Director is a member of the  
**STAGE DIRECTORS AND CHOREOGRAPHERS  
SOCIETY**, a national theatrical labor union.

+ TimeLine Company Member



\*Member of Actors'  
Equity Association,  
the union of professional  
actors and stage managers



Those artists identified by USA  
are members of United Scenic  
Artists, Local 829 of the IATSE,  
the union representing scenic,  
costume, lighting, sound, and projections  
designers in Live Performance.

# CAST

---

<b>Will Allan**</b> .....	Dr. Thomas Stockmann
<b>Charles Andrew Gardner**</b> .....	Captain Horster
<b>Kenneth Hamilton*</b> .....	Billing
<b>Anish Jethmalani**</b> .....	Aslaksen
<b>Behzad Dabu+</b> .....	Peter Stockmann
<b>Grayson Kennedy</b> .....	Hovstad
<b>Campbell Krausen</b> .....	Petra Stockmann
<b>David Parkes+</b> .....	Morten Kil

UNDERSTUDIES: Piper Jean Bailey (*Petra Stockmann*),  
Matthew Collins (*Dr. Thomas Stockmann*), Nathan Daniel Goldberg (*Hovstad*),  
Paul Murray (*Aslaksen/Morten Kil*), Adam Schulmerich (*Peter Stockmann*), and  
Joshua David Thomas (*Billing/Captain Horster*). Understudies will never substitute  
for a listed player unless an announcement is posted at the performance.

\* Member of Actors' Equity Association, the union of professional actors and stage managers.

+ TimeLine Company Member

## SETTING

A small town in Norway, late 1800s

# PRODUCTION STAFF

---

Associate Director .....	<b>DeRon S. Williams</b>
Assistant Stage Manager .....	<b>Gianni Carcagno</b>
Dramaturgical Display Designer .....	<b>Dina Spoerl</b>
Fight Director .....	<b>Joe Foust</b>
Associate Sound Designer .....	<b>Brandon Reed</b>
Associate Properties Designer .....	<b>Nga Sze (Cecilia) Chan</b>
Assistant Scenic Designer .....	<b>Devin Meseke</b>
Assistant Costume Designer .....	<b>Ophena De La Rosa</b>
Assistant Lighting Designer .....	<b>Ross Wheeler</b>
Scenic Supervisor .....	<b>James Doolittle</b>
Scenic Charge Artist .....	<b>Jessica Kuehnau Wardell</b>
Costume Supervisor .....	<b>Lucy Elkin</b>
Wig and Hair Consultant .....	<b>Miguel A. Armstrong</b>
Wardrobe Run Crew .....	<b>Eric Guy</b>
Lighting Supervisor .....	<b>Mark Brown</b>
Audio Supervisor .....	<b>Florence Borowski</b>
Assistant Stage Manager Sub / Floor Manager .....	<b>Sophie Harris</b>
Directing Apprentices .....	<b>Sofi Olona, Rachel Romero</b>

# DONORS CIRCLE

# FOUNDERS CIRCLE

Production sponsorship support for *An Enemy of the People* is provided by the DONORS CIRCLE (in formation):

Mary Stowell  
JoAnne Dobrick  
W.R. and Sandra Manteuffel  
Justin Daab and Lois Morrison  
Maridee Quanbeck  
Marcia Baylin  
Jack and Sandra Guthman  
Andrew and Kate Bushey  
Oehme and Winslow Soule  
Holly Wathan  
Tilly Wilhoite

TimeLine gratefully acknowledges the FOUNDERS CIRCLE that provides annual leadership support of the SUSTAINABILITY FUND:

The Pritzker Traubert Foundation  
The Passionflower Foundation  
Anonymous  
Additional support for the Sustainability Fund is provided by Donna Craven, Adrienne Meisel, and Rand Sparling.

*The Sustainability Fund supports expanded operations in TimeLine's new home, contributing to the sustainability of the theatre.*

## PLEASE NOTE

The videotaping or making of electronic or other audio and/or visual recordings (including photographs) of this production or distributing recordings on any medium, including the internet, is strictly prohibited, a violation of the author's rights and actionable under United States copyright law.

## CONVERSATION

TimeLine Theatre Company is dedicated to exploring today's social and political issues through the lens of the past. We share information and provide inspiration for conversation through this *Backstory* program book, the interactive lobby experience (with elements available in person in our new exhibit galleries outside the theatre space, as well as online), discussion events, our blog Behind the 'Line, and more. Explore all the resources available at [timelinetheatre.com/explore-enemy](http://timelinetheatre.com/explore-enemy).

### VISIT THE ONLINE LOBBY FOR AN ENEMY OF THE PEOPLE



To supplement the lobby experience available at the theatre, we've got additional resources for you to explore online! Scan the QR Code or visit [timelinetheatre.com/enemy-lobby](http://timelinetheatre.com/enemy-lobby) to find additional content such as multi-media resources and further reading, online versions of some of the materials displayed in the lobby, photos, videos, and much more!

### FIND US ON SOCIAL MEDIA



TimeLine Theatre is on Instagram, Facebook, and YouTube at @TimeLineTheatre. Don't forget to tag us and use the hashtag #AnEnemyOfThePeople and/or #TimeLineTheatre.

# BIOGRAPHIES



**WILL ALLAN** (*Dr. Thomas Stockmann*) is a TimeLine Company Member returning to TimeLine's stage for the first time since his Chicago theatre debut in 2009's *THE HISTORY BOYS*. His political satire play, *CAMPAIGNS, INC.*, was developed in

TimeLine's Playwrights Collective and premiered as part of TimeLine's 2022-23 season. Chicago credits include *ASHLAND AVENUE*, *THE CHERRY ORCHARD*, *THE WINTER'S TALE*, *AH, WILDERNESS!*, *THE SEAGULL*, and *DARTMOOR PRISON* (Goodman); *GOOD PEOPLE*, *THE MARCH*, *THE FLICK*, *ANIMAL FARM*, *A SEPARATE PEACE*, and *WE ARE PROUD TO PRESENT...* (Steppenwolf); *THE COMEDY OF ERRORS* (Chicago Shakespeare); *THE WHALE* (Victory Gardens); *THE GOAT OR, WHO IS SYLVIA?* (Remy Bumppo), and many more. Film and television credits include *CHICAGO FIRE*, *CHICAGO JUSTICE*, *NCIS: HAWAII*, *STATION 19*, and *UNFROSTED: THE POP TARTS STORY*.



**CHARLES ANDREW GARDNER** (*Captain Horster*) is a TimeLine Company Member and Living History Teaching Artist. Previous TimeLine credits include *BOULEVARD OF BOLD DREAMS*, *KILL MOVE PARADISE* (Equity Jeff Award and BTAA nominations—Ensemble), *PARADISE BLUE* (BTAA nomination—Featured Actor), and *MY KIND OF TOWN* (BTAA nomination—Best Actor), for which the *Chicago Tribune* named him one of 2012's "Hot New Faces to Watch." Other Chicago theatre credits include *PRIMARY TRUST*, *OBJECTS IN THE MIRROR*, *STOP. RESET.*, and *BUZZER* (Goodman); *HIS SHADOW* (16th Street, Equity Jeff Award nomination—Performer in a Principal Role, Play); *HOW LONG WILL I CRY* (Steppenwolf); *MACBETH* and *OTHELLO* (The Suitcase Shakespeare Company); and *THE GREAT FIRE* (Lookingglass). On-camera credits include *THE MAYOR OF KINGSTOWN*, *SOMEBODY SOMEWHERE*, *CHICAGO MED*, *THE CHI*, and *CHICAGO P.D.* Film credits include *HEIST 88*, *LONG RIDE HOME*, *OLYMPIA*, *EXODUS*, *EVERY 21 SECONDS*, and *HOLDING ON*, plus multiple national

commercials. Charles is the SAG-AFTRA Chicago Local President, an on-camera acting professor at DePaul and Roosevelt universities, and on-camera instructor at The Acting Studio Chicago.



**KENNETH HAMILTON** (*Billing*) is delighted to make his TimeLine debut. Theatre credits include *EURYDICE* (Signature Theatre, New York, N.Y.); *ROMEO AND JULIET* and *MUCH ADO ABOUT NOTHING* (Milwaukee Repertory); *A CHRISTMAS CAROL*

(Indiana Repertory); *SHORT SHAKESPEARE! ROMEO AND JULIET* (Chicago Shakespeare); *THE LION IN WINTER* (Court); *EURYDICE* (Writers); *SUPERIOR DONUTS* (AthensWest Theatre, Lexington, Ky.); *MUCH ADO ABOUT NOTHING* (St. Louis Shakespeare); *MACBETH* and *TWELFTH NIGHT* (American Players Theatre, Spring Green, Wis.); and *A CHRISTMAS CAROL* (American Shakespeare Center, Stanton, Va.). Kenneth is represented by Stewart Talent and a member of the 2029 Yale MFA acting cohort.



**ANISH JETHMALANI** (*Aslaksen*) is a Company Member at TimeLine, where his credits include *DHABA ON DEVON AVENUE* (in partnership with Writers Theatre); *THE LEHMAN TRILOGY*; *CAMPAIGNS, INC.*; *OSLO* (Equity Jeff Award nomination—Performer in a Supporting Role, Play); *IN THE NEXT ROOM*, *OR THE VIBRATOR PLAY*; *A DISAPPEARING NUMBER*; *INANA*; and *BLOOD AND GIFTS*. Other Chicago stage credits include various productions at Goodman, Court, Lookingglass, Chicago Shakespeare, Writers, Victory Gardens, A Red Orchid, Remy Bumppo, The House, First Folio, Silk Road Rising, Next, Apple Tree, and many more. Regional credits include *HENRY VIII* and *MUCH ADO ABOUT NOTHING* at the Oregon Shakespeare Festival. Film and television credits include *DELI BOYS*, *STATION ELEVEN*, *61ST STREET*, *EMPIRE*, *CHICAGO P.D.*, *CHICAGO MED*, *APB*, *BOSS*, *LEVERAGE*, *EARLY EDITION*, *BATMAN V. SUPERMAN*, *GIRL ON THE THIRD FLOOR*, *ANIMALS*, and more.

# BIOGRAPHIES



**BEHZAD DABU** (*Peter Stockmann*) is a TimeLine Company Member now based in Los Angeles and is thrilled to return to TimeLine after previously performing in *THE HISTORY BOYS*, *BLOOD AND GIFTS*, and *INANA*. He just wrapped a successful run of

*GUARDS AT THE TAJ*, which he produced, directed, and starred in. Behzad is Director of Acting for Hillman Grad, Acting Coach for the TV series *The CHI*, leads a Scene Study at Last Acting Studio, and is a founding member of The Chicago Inclusion Project. Selected theatre credits include *DISGRACED* (Center Theatre Group, Goodman, Berkeley, Seattle, ATC), *SAMSARA* (Victory Gardens), *I HATE IT HERE* and *THE MATCHMAKER* (Goodman), and *PUT YOUR HOUSE IN ORDER* (La Jolla). Selected screen credits include *HOW TO GET AWAY WITH MURDER*, *THE CHI*, *THE GOOD PLACE*, *THE LION GUARD*, *THE LOUD HOUSE*, *ALL RISE*, and *CHICAGO P.D.*



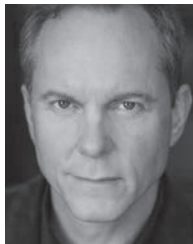
**GRAYSON KENNEDY** (*Hovstad*) is excited to be making his TimeLine debut! Grayson is the Artistic Director of Gwydion Theatre Company, where his acting credits include *THE ZOO STORY*, *THIS IS OUR YOUTH*, and *DEATH OF A SALESMAN*. Grayson

has also directed Gwydion's productions of *ACTION* and *WAITING FOR LEFTY*. Additional acting credits include *ROSENCRANTZ AND GUILDENSTERN ARE DEAD* (Court), *A BRIGHT ROOM CALLED DAY* (Blank Theatre Company), and *LOVE'S LABOURS LOST* (Hoosier Shakespeare Festival). Grayson is represented by Grossman & Jack Talent.



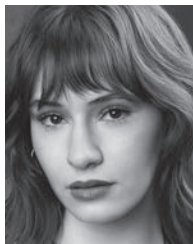
**CAMPBELL KRAUSEN** (*Petra Stockmann*) is making her TimeLine debut. Her Chicago area theatre credits include *ANOTHER MARRIAGE* (Steppenwolf), *THE SOUND OF MUSIC* and *THE WIZARD OF OZ* (Marriott); *THE SPORTING LIFE* (Jackalope); and *LES MISERABLES*

(Uptown Music Theatre). Film credits include *LAURA LOUISE* and *GHOSTLIGHT*. Campbell is repped by the incredible teams at Stewart Talent and Bercy Talent Management. Love to Mom and Dad! Instagram: @campbell\_krausen.



**DAVID PARKES** (*Morten Kill*) is proud to be a TimeLine Company Member. TimeLine credits include *BLACK SUNDAY*; *OSLO*; *BOY*; *CAMPAIGNS, INC.*; *BLOOD AND GIFTS*; *A WALK IN THE WOODS*; *FROST/NIXON*; *NOT ENOUGH AIR*; *TRUMBO*; *WID-*

*OWERS' HOUSES*; *HARMLESS*; *THE GENERAL FROM AMERICA*; *A MAN FOR ALL SEASONS*; *PRAVDA*; *THE LION IN WINTER*; *HANNAH AND MARTIN*; *AWAKE AND SING!*; *THE CRUCIBLE*; *HALCYON DAYS*; *NOT ABOUT NIGHTINGALES*; and *GASLIGHT*. Other Chicago credits include work with Steppenwolf, American Theatre Company, Northlight, The House, Eclipse, Apple Tree, Streetsigns, Footsteps, Greasy Joan, and the Piven Theatre. His recent film/television credits include the upcoming film *ENEMIES* with Jeremy Allen White and Austin Butler, *61ST STREET*, *THE BEAST*, *ROUNDING*, *TEACHER*, *EMPIRE*, *PROVEN INNOCENT*, *CHICAGO MED*, *CHICAGO FIRE*, *THE CHICAGO CODE*, and *BOSS*.



**PIPER JEAN BAILEY** (*Petra Stockmann U/S*) is thrilled to be making her TimeLine debut! Credits include *ROMEO AND JULIET* (Milwaukee Repertory), *BONNIE AND CLYDE* (The Rev Theatre, Auburn, N.Y.), *IT GIRL* (Goodman, Playwrights Reading

Unit), and the upcoming indie feature film *BIG TIME*. She received her B.S. degree in Acting from Northwestern University, where she performed in *THE PROM* and *BE MEAN TO ME* (Wirtz Center), and *FEFU AND HER FRIENDS* (Wave Productions). Piper is a fiber artist and designer who shares her handmade work on Instagram at @pj.crochet and @pjsorbet. She is represented by Gray Talent Group. Much love to her family and friends for their unwavering love and support.

# BIOGRAPHIES



**MATTHEW COLLINS** (*Dr. Thomas Stockmann U/S*) is pleased to return for his fourth production at Time-Line, where previous understudy credits include **DANNY CASOLARO DIED FOR YOU**, **SPILL**, and **TROUBLE IN MIND**. Television credits include **CHICAGO MED**, **CHICAGO FIRE**, and the upcoming **WHERE THERE'S SMOKE**. Chicago theatre credits include **SOUTHERN GOTHIC**, **THE LIBRARY**, and **A TRUTH IN CONTEXT**. Originally from Kentucky, Matthew holds a BS degree in Theatre from Murray State University. He is represented by Big Mouth Talent.



**NATHAN DANIEL GOLDBERG** (*Hovstad U/S*) is beyond excited to get to work with Time-Line Theatre. He was recently seen in Court Theatre's **BIG WHITE FOG**. Some other recent/favorite credits include **EVERY BRILLIANT THING**

(University of Michigan); **WITH LOVE, FROM INSIDE** (Detroit Public Theatre); and **THE BEAR** (Hulu). Nathan holds a BFA degree in Acting and a minor in Playwriting from the University of Michigan, and is currently training at The Second City Conservatory. Boundless gratitude to his ever-supportive family, girlfriend, friends, mentors, #StewCrew, Ron, and the Time-Line team for their unwavering support in his artistic endeavors. Instagram: @nathandanielgoldberg. Visit [nathandanielgoldberg.com](http://nathandanielgoldberg.com).



**PAUL MURRAY** (*Aslaksen/Morten Kiil U/S*) is a Chicago-based actor and is happy to be making his TimeLine debut. Chicago credits include **MR. WOLF** (Steppenwolf, U/S); **THE CAVE** (A Red Orchid Theatre, U/S); **SORROWS OF STEPHEN** (Actor

Rep Company); **A COMPANY OF WAYWARD SAINTS** (Bryn Mawr Playhouse); **THE HOT L BALTIMORE** (Ensemble Theatre Company); and **FIDDLER ON THE ROOF** (Theatre First Productions). Film credits include **CAMP NIGHT**, **LUCILLE**, and **PERDIDO**. Love to Dawn,

Taylor, and Austin for unwavering support. Paul is represented by Grossman & Jack Talent.



**ADAM SCHULMERICH** (*Peter Stockmann U/S*) is delighted to be working with TimeLine Theatre for the first time. Recent Chicago credits include **SUPERIOR DONUTS** (The Artistic Home); and **LOBBY HERO**, **BECKY**, and **NURSE OF SALEM** (Shattered

Globe). Recent television credits include **CHICAGO MED** and **MR. THROWBACK**. Adam is an ensemble member with Shattered Globe and a received his BFA degree in Theatre Arts & Film from SUNY Purchase College. He is represented by Gray Talent Group.



**JOSHUA DAVID THOMAS** (*Billing/Captain Horster U/S*) is thrilled to return to Time-Line after previously understudying **HUNDREDS AND HUNDREDS OF STARS**. A Chicago-based actor drawn to bold, ensemble-driven work, his credits include **A JUKE-**

**BOX FOR THE ALGONQUIN** (Citadel Theatre), **CHICAGO LORE(S)** (UrbanTheater Company), and **GODS AND MONSTERS** (Theater Wit), and he spent a summer with Illinois Shakespeare Festival. On camera, he's appeared in several commercials, including McDonald's, United Airlines, and Midland Bank. Joshua holds a BA degree in Acting from Illinois State University and is represented by Big Mouth Talent (Chicago).

**HENRIK IBSEN** (*Playwright, 1828–1906*) was a major 19th-century Norwegian playwright, theatre director, and poet. He is often referred to as “the father of prose drama” and is one of the founders of Modernism in the theatre. His major works include **BRAND**, **PEER GYNT**, **AN ENEMY OF THE PEOPLE**, **EMPEROR AND GALILEAN**, **A DOLL'S HOUSE**, **HEDDA GABLER**, **GHOSTS**, **THE WILD DUCK**, **ROSMERSHOLM**, and **THE MASTER BUILDER**.

**AMY HERZOG** (*Adapter*) is a playwright and adapter whose plays include **MARY JANE** (New York Drama Critics' Circle Award), **4000 MILES** (Pulitzer Prize finalist, Obie Award for Best New American Play), **AFTER THE REVOLUTION** (New York Times Outstanding Playwright Award), and **BELLEVILLE** (Drama Desk Award

# BIOGRAPHIES

---

nominee). She received the Benjamin H. Danks Award from the American Academy of Arts and Letters. Herzog teaches playwriting at Yale University's David Geffen School of Drama.

**RON OJ PARSON** (*Director*) is director and actor based in Chicago and became a TimeLine Company Member in 2016. His TimeLine credits include *TROUBLE IN MIND*, *RELENTLESS* (also at Goodman), *TOO HEAVY FOR YOUR POCKET*, *TO CATCH A FISH*, *PARADISE BLUE*, *SUNSET BABY*, and *A RAISIN IN THE SUN*. Ron is a native of Buffalo, N.Y., and a graduate of the University of Michigan's professional theater program. He is a Joyce Foundation grantee and Resident Artist at Court Theatre, a former Associate Artist with Teatro Vista and Writers Theatre, and the co-founder and former Artistic Director of Onyx Theatre Ensemble. He has worked at countless theatres across the county, including in Chicago at Goodman, Steppenwolf, Court, Black Ensemble, Congo Square, UrbanTheater Company, ETA Creative Arts, and Writers; and regionally at Alliance Theatre, Actors Theatre of Louisville, Milwaukee Repertory, South Coast Repertory, Pasadena Playhouse, Roundabout, Center Stage Baltimore, and New York's Signature Theatre. In Canada, he directed the world premiere of *PALMER PARK* by Joanna McClelland Glass at the Stratford Shakespeare Festival. He is a member of AEA, SAG-AFTRA, and SDC. Visit [ronojparson.net](http://ronojparson.net). He would like to dedicate this production to Afram Bill Williams and Woodie King Jr.

**JOHN CULBERT** (*Scenic Designer*) returns to TimeLine, where he previously designed *THE LEHMAN TRILOGY*, *THE CHINESE LADY*, *CHIMERICA*, *JUNO*, and *THE FARNSWORTH INVENTION*. He was a faculty member and Dean of The Theatre School at DePaul University for many years, the alma mater of TimeLine's six founding Company Members. Other Chicago credits include *MISS JULIE*, *BERLIN*, *ANTIGONE*, and *GOSPEL AT COLONUS* (Court); *HEART SELLERS* and *MARIE AND ROSETTA* (Northlight); *Villette* (Lookingglass); *TWELFTH NIGHT* and *ARCADIA* (Writers); *Regina* (Lyric Opera); and *HAVING OUR SAY* and *TWO TRAINS RUNNING* (Goodman). Regional credits include productions with Milwaukee Rep, Opera Theatre of St. Louis, Long Wharf Theatre, Berkeley Repertory, McCarter Theatre, and Shakespeare Theatre Company. International credits include productions with Singapore Repertory and Opera National du Rhin. Other projects include the lighting design for the Chicago Park District's Buckingham Fountain.

**CHRISTINE PASCUAL** (*Costume Designer*) is pleased to be back at TimeLine, where she previously designed *DHABA ON DEVON AVENUE*, *NOTES FROM THE FIELD*, *BOULEVARD OF BOLD DREAMS*, *TROUBLE IN MIND*, *RELENTLESS* (Equity Jeff Award nomination—Costume Design), and *OSLO*, among others. Other design credits include *TIGER STYLE!* and *EAST TEXAS HOT LINKS* (Writers); *THE LION IN WINTER* (Court); *TWELFTH NIGHT* and *I, CINNA* (Chicago Shakespeare); *CULLUD WATTAH* and *HOW TO DEFEND YOURSELF* (Victory Gardens); *DANCE NATION* and *LA RUTA* (Steppenwolf); *THE TOTAL BENT* and *THE DISPLACED* (Haven); *LADY IN DENMARK* and *FEATHERS AND TEETH* (Goodman); *DUTCH MASTERS* and *THE LIGHT FANTASTIC* (Jackalope); *CRUMBS FROM THE TABLE OF JOY* (Raven); and *PUT YOUR HOUSE IN ORDER* (The Roustabouts). Christine holds an MFA degree from the University of Illinois Urbana-Champaign. She is a member of United Scenic Artist Local 829. She is a recipient of the 3Arts Award and the Michael Merritt Award for Design and Collaboration.

**BRANDON WARDELL** (*Lighting Designer*) is a Chicago-based lighting, scenic, and projections designer returning to TimeLine, where he previously designed *THE LIFESPAN OF A FACT*, *TROUBLE IN MIND*, *RUTHERFORD AND SON*, *CARDBOARD PIANO*, and *IN THE NEXT ROOM, OR THE VIBRATOR PLAY*. He is a member of the Steep Theatre Company Ensemble, an Artistic Associate with Griffin Theatre Company, and will join the faculty of the University of Minnesota, Twin Cities in the fall. Recent designs include *TWO TRAINS RUNNING* (Court); *A CASE FOR THE EXISTENCE OF GOD* and *LIGHT FALLS* (Steep); *AN ACT OF GOD* (Paramount); *GIRLS & BOYS* and *ASTRONAUTS GROUP I* (Griffin); *THE CURIOUS INCIDENT OF THE DOG IN THE NIGHT-TIME* (Steppenwolf); *A NUMBER* (Writers); *BLUES IN THE NIGHT* (Porchlight); *MEN ON BOATS* (American Theatre Company); *THE GAME OF LOVE AND CHANCE* (American Players); and *MILLION DOLLAR QUARTET* (The Rev). Brandon earned his MFA degree from Northwestern University. Visit [brandonwardelldesign.com](http://brandonwardelldesign.com).

**ANDRÉ PLUESS** (*Sound Designer*) returns to TimeLine where his previous credits include *THE LEHMAN TRILOGY*, *BOULEVARD OF BOLD DREAMS*, *THE CHINESE LADY*, *OSLO*, *SPILL*, and *CHIMERICA*. His Broadway credits include *GOOD NIGHT, OSCAR*; *THE MINUTES*; *33 VARIATIONS*; *I AM MY OWN WIFE*; and *METAMORPHOSES*. Off-Broadway, he has designed *THE CLEAN HOUSE* (Lincoln Center), and *MILK LIKE SUGAR* and

# BIOGRAPHIES

---

BFE (Playwrights Horizons). Regional credits include multiple productions with the Oregon Shakespeare Festival, Center Theatre Group, Yale Repertory, Arena Stage, Goodman, Steppenwolf, Chicago Shakespeare, Court, Berkeley Repertory, Williamstown Theatre Festival, La Jolla Playhouse, The Huntington, and South Coast Repertory. Based in Chicago, André is an ensemble member of Lookingglass Theatre Company.

**NICOLAS BARTLESON** (*Properties Designer*) returns to TimeLine, where he previously worked on HUNDREDS AND HUNDREDS OF STARS. Properties design credits include THE FIRST LADY OF TELEVISION, TWISTED MELODIES, PRAYER FOR A FRENCH REPUBLIC, THE HEARTSELLERS, LITTLE WOMEN, and others (Northlight); HULA HOOPIN' QUEEN, CHARLOTTE'S WEB, THE LAST STOP ON MARKET STREET, and DIARY OF ANNE FRANK (Young People's Theatre of Chicago); MISERY (American Blues); and 'NIGHT MOTHER, CONFEDERATES, and THE NORMAL HEART (Redtwist Theatre). Nick has also worked at Drury Lane, Steppenwolf, Kehoe Designs, Milwaukee Repertory, Utah Shakespeare Festival, and Glimmerglass Opera. Visit [nickbartleson.wixsite.com/nickbartleson](http://nickbartleson.wixsite.com/nickbartleson).

**MAREN ROBINSON** (*Dramaturg*) is Resident Dramaturg and a Company Member at TimeLine, where she has been dramaturg for 36 productions. Favorite TimeLine projects include WHAT THE CONSTITUTION MEANS TO ME; CAMPAIGNS, INC; IN THE NEXT ROOM, OR THE VIBRATOR PLAY; A DISAPPEARING NUMBER; THE APPLE FAMILY PLAYS; THE NORMAL HEART; MY KIND OF TOWN; TO MASTER THE ART; IN DARFUR; THE HISTORY BOYS; and COPENHAGEN. Maren was an artistic intern at Steppenwolf and has worked with Court, Eclipse, Strawdog, Caffeine, Camenae, and Lifeline theaters. She holds a master's degree in Humanities from the University of Chicago. She is a lecturer at The Theatre School at DePaul University, Associate Director of the Master of Arts Program in Humanities at the University of Chicago and the Chicago Metro VP of the Literary Managers and Dramaturgs of the Americas. Maren is also a photographer, and some of her images can be viewed as part of the lobby experience for AN ENEMY OF THE PEOPLE—the first time her work as a dramaturg and photographer have collided.

**OLIVIA SULLAM** (*Stage Manager*) is delighted to return to TimeLine, where she previously was stage manager for THE LIFESPAN OF A FACT and production assistant on BLACK SUNDAY. Olivia is a graduate of Loyola University Chicago with a BA degree in Theatre

and a minor in English. Other select Chicago credits include WISH YOU WERE HERE (Remy Bumppo); AT THE WAKE OF A DEAD DRAG QUEEN (The Story Theatre); LITTLE RED WINTER CIRCUS (Actor's Gymnasium); LITTLE WOMEN (Northlight); THE COMEDIANS (Raven); HAPPY DAYS ARE HERE (AGAIN) (Steep); DISHWASHER DREAMS, WIFE OF A SALESMAN, and TIGER STYLE! (Writers Theatre); and THE DREAM KING and SOMEWHERE OVER THE BORDER (Teatro Vista).

**DERON S. WILLIAMS** (*Associate Director*) is a freelance director and dramaturg returning to TimeLine, where he previously was dramaturg for EUREKA DAY, NOTES FROM THE FIELD, THE LEHMAN TRILOGY, TROUBLE IN MIND, and BOULEVARD OF BOLD DREAMS and associate director for TROUBLE IN MIND. He is an Assistant Professor of Theatre at Loyola University Chicago. Other credits include dramaturgy for TONI STONE (Goodman) and directing or associate directing for WHITE CHRISTMAS and 1776 (Marriott); TIMONIA @ NASHVILLE (Lifeline); FAIRVIEW (Loyola University Chicago); and THE EXONERATED (Spectrum Theatre, Providence, R.I.). He holds a BA degree in Theatre from Albany State University, an MA degree in Arts Administration from Eastern Michigan University, and a PhD degree in Theatre from Texas Tech University. Visit [deronswilliams.com](http://deronswilliams.com).

**GIANNI CARCAGNO** (*Assistant Stage Manager*) is excited to return to TimeLine after previously working on BOULEVARD OF BOLD DREAMS; TROUBLE IN MIND; CAMPAIGNS, INC.; and THE CHINESE LADY. Other credits include THE CHOIR OF MAN (National Tour); LEROY & LUCY, POTUS, AMADEUS, and NO MAN'S LAND (Steppenwolf); TWELFTH NIGHT and SHORT SHAKES! ROMEO & JULIET (Chicago Shakespeare), and GOODNIGHT MOON, FREDERICK, GO DOG GO!, and ¡VE PERRO VE! (Chicago Children's Theatre). Gianni is also the Accessibility Coordinator and Captioner for About Face Theatre.

**DINA SPOERL** (*Dramaturgical Display Designer*) returns to TimeLine, where her recent credits include HUNDREDS AND HUNDREDS OF STARS; DEBATE: BALDWIN VS. BUCKLEY; BLACK SUNDAY; NOTES FROM THE FIELD, THE LIFESPAN OF A FACT; WHAT THE CONSTITUTION MEANS TO ME; BOULEVARD OF BOLD DREAMS; TROUBLE IN MIND; CAMPAIGNS, INC.; THE CHINESE LADY; and RELENTLESS; among many others since 2011. She has over 20 years of graphic design and exhibit design experience. Past and current clients include the American Library Association, The National

# BIOGRAPHIES

Museum of Natural History, The Newberry Library, Nextbook, National Building Museum, Naper Settlement, Children's Home & Aid, and Indiana State Museum.

**PJ POWERS** (*Artistic Director*) was a co-founder of TimeLine in 1997 and became Artistic Director in 1999. Since then, he has overseen the production of more than 80 plays, including 13 world premieres and more than 40 Chicago premieres. During his tenure, TimeLine has garnered 64 Jeff Awards, including 11 for Outstanding Production, as well as awards for excellence in arts management, including the 2016 MacArthur Award for Creative and Effective Institutions. PJ was instrumental in establishing TimeLine's home on Wellington Avenue in 1999; expanding the company's programming to include productions in numerous other venues, including the Broadway Playhouse; creating the TimePieces play reading series and First Draft Festival of new work; launching the Living History Education Program in Chicago Public Schools under the direction of TimeLine co-founder Juliet Hart; and planning for TimeLine's new home in Uptown. As an actor, he has appeared in 20 productions at TimeLine, including EUREKA DAY, THE LIFESPAN OF A FACT, THE APPLE FAMILY PLAYS: THAT HOPEY CHANGEY THING, THE FRONT PAGE, THE FARNSWORTH INVENTION, FIORELLO!, and HAUPTMANN. He also has appeared at Writers, Northlight, and Shattered Globe, among others. A graduate of The Theatre School at DePaul University, PJ has served on the Board of Directors for the League of Chicago Theatres, was awarded the Meier Achievement Award for mid-career artists, and received a Goldman Sachs Senior Fellowship at the Smithsonian National Museum of American History. He directed the one-night-only Chicago premiere of

J.T. Rogers' ONE GIANT LEAP: THE APOLLO 11 MOON LANDING at the Broadway Playhouse.

**MICA COLE** (*Executive Director*) has been TimeLine's Executive Director since April 2022. A Chicago native raised on the South Side, she has worked as an arts administrator and changemaker for nearly two decades. Most recently, she has been a national consultant providing executive coaching and strategic planning for cultural institutions working to embrace an antiracist leadership paradigm. Mica is a consultant with artEquity, a nonprofit organization that provides tools, training, and resources for individuals and organizations working at the intersection of art and activism. She co-led its BIPOC Surviving Predominantly White Institutions Series and the BIPOC Leadership Circle—both aimed at providing resources and mentorship to leaders of color. Prior to her work as an organizational consultant, Mica served eight seasons as the Repertory Producer at the Oregon Shakespeare Festival. As a senior leader at OSF, she played a key role in guiding the company's equity, diversity, and inclusion initiatives, many of which now serve as foundational organizational models for institutions around the world. Mica has produced more than 80 shows, including a dozen transfers and national co-productions of new plays with theatres such as American Repertory, Seattle Repertory, South Coast Rep, Arena Stage, Portland Center Stage, and Berkeley Repertory. She worked in Chicago as the Executive Director of Free Street Theater and as the Director of Education and Engagement at Writers Theatre. Mica served on the advisory committee for the Latinx Theatre Commons and is a founding member of the Black Theatre Commons. She is a graduate of The Theatre School at DePaul University.

## YOUR ROLE

**DID YOU KNOW TICKET SALES COVER ONLY HALF THE COST OF PRODUCING THE SHOW YOU'RE SEEING?**

TimeLine Theatre—like our peers in Chicago's vibrant community of not-for-profit theatres—**depends upon the support of patrons like you to thrive.** To learn more about all the ways you can support our mission and programs, visit [timelinetheatre.com/donate](https://timelinetheatre.com/donate).



**TO MAKE A DONATION and learn more about TimeLine's giving levels, visit [timelinetheatre.com/individual-giving](https://timelinetheatre.com/individual-giving) or scan the QR Code.**

# CREW

---

Scenic Artists .....	José Alexander, Shannon Evans
Head Carpenters .....	Nora Evison, Kevin Scott
Carpenters.....	Axel Adams, Bobby Barnett, Kayne Bowling, Leah Donovan Kyle Francavilla, Malia Hunter, Aspen Lear, Kendra Luedke, Mick Marcotte, James McCracken, Aubrey Pierce, Royce Pataras, Alex Rhyan, Reese Sheldahl, Bennett Smalley, Nicholas Thomas, Eli Wallow
Stitcher/Costume Support .....	Eric Guy
Electricians .....	Sibyl Ashcraft-Holt, Quinn Chisenhall, Josiah Croegaert, Sam Eads, Nell Morrisey, Avery Spellmeyer, Samantha Tetzlaf, Karen Wallace, Riley Woods
Audio Technicians .....	Chase Grunden, Astra Duffy, Darien Durell, Althea Pearson, Averi Paulson

## SPECIAL THANKS

---

**THIS PRODUCTION OWES SPECIAL THANKS** to numerous individuals and organizations for their time, talents and support, including The 4529 Prop Shop; Aria Music Designs, LLC; Mark Botelho; c2 Inc.; Chicago Academy of Sciences / Peggy Notebaert Nature Museum; The Chicago Green Theatre Alliance; Columbia College; Conscious Costume; Court Theatre; Cultural Access Collaborative; Linn Edvardsen; Andres Fiz; Emmanuel Jimenez; JRLX; Lookingglass Theatre; Loyola University; The Lyric Opera of Chicago; Northeastern Illinois University; Northlight Theatre; Northwestern University, Porchlight Music Theatre; PRG Gear; Roosevelt University; TAPS at University of Chicago; and The Theatre School at DePaul University.

## ACCESS SERVICES

---

TimeLine is working to make our productions accessible to all patrons. A few of the services we offer are listed below; please visit [timelinetheatre.com/access](http://timelinetheatre.com/access) for a complete listing and more information. And if you have feedback or suggestions regarding accessibility, please contact Audience Services Manager Kellyn Henthorn at [kellyn@timelinetheatre.com](mailto:kellyn@timelinetheatre.com).



**Assistive Listening Devices** Ask an Audience Services staff member to check out an RF listening device (collateral may be required).



**Accessible Seating** If you require accessible seating, please let us know when you place your reservation how we may assist in fitting your needs.



**Open Captioning** is a text display of words and sounds heard during an event. The display is positioned to be visible to anyone in a particular seating area. You may choose to use or ignore this service during the performance.

Open Captioned performances are:

- Friday, May 29 at 7:30 p.m.
- Saturday, May 30 at 2 p.m.



**Audio Description** A live narrator gives verbal descriptions of actions, costumes, scenery, and other visual elements via a handheld device delivered to patrons upon request before the show.

The Audio Described performance is:

- Saturday, June 6 at 2 p.m.

# WELCOME TO TIMELINE'S NEW HOME

**A**fter 25 years of working in rented facilities on Wellington Avenue, TimeLine Theatre is overjoyed to open a permanent space where we can grow and innovate—a place that will elevate everything people love about TimeLine and support new artistic possibilities.

Rooted in our values, this new home in Uptown reflects a deeper investment in TimeLine's vision to be a prominent civic and artistic leader in Chicago and nationally, distinguished for creating experiences that make connections across our diverse communities and spark reflection and dialogue about the intersection of past, present, and future.

**We hope you will join us in exploring all that this new home can be!**

Below is some information that may be of interest as we begin our journey. If you have other questions, feel free to email [info@timelinetheatre.com](mailto:info@timelinetheatre.com).

## ABOUT THE BAR & CAFÉ

**Come Early, Stay Late!** During the run of *An Enemy of the People*, TimeLine's Bar & Café (located on the first floor) will be open limited hours, primarily to serve audience members before and after performances.

Over the upcoming weeks and months, however, our Hospitality Team will be working to expand hours for the general public—so you can support and engage with us whether you're coming to see a show or not!

Fun fact about the Bar & Café: The centerpiece of the lobby is a back bar sourced through our friends at Salvage One, who acquired it from Fizz Bar & Grill, formerly on Lincoln Avenue. The front bar was designed to complement its vintage character, and zinc countertops were added to give both bars a unified, period feel. We love such a connection of past and present being the centerpiece of this gathering place, where so many future memories will be made.

For the latest about Bar & Café hours and offerings, please visit [timelinetheatre.com/bar-cafe](http://timelinetheatre.com/bar-cafe).

## COMMUNITY ENGAGEMENT

TimeLine is committed to authentic and sustained engagement with the greater Chicago community, and particularly with the Uptown neighborhood. Building on the success of past efforts, community engagement is taking an increasingly central role in our work. Our Community Engagement Team (CET), an internal cross-department group, collaborates to pursue engagement partnerships, projects, and goals. And over the past year, CET collaborated with community members to develop a comprehensive "roadmap" to guide these efforts. We're excited to activate its recommendations going forward—to inform, engage, empower, and energize both current and new members of TimeLine's community. To learn more about TimeLine's community engagement activities, visit [timelinetheatre.com/community](http://timelinetheatre.com/community).

## SPACE RENTAL OPPORTUNITIES

**Stay tuned for updates about rental opportunities in our new space!** If you or someone you know may be interested in using space at TimeLine's new home, please stay tuned. Rental opportunities for our lobbies and multi-purpose spaces will be available beginning this fall. Our 250-seat theatre is not available for rental until June 2027. These dates may change. For updates about rental opportunities, please visit [timelinetheatre.com/rentals](http://timelinetheatre.com/rentals).

# ABOUT TIMELINE

## OUR MISSION

TimeLine Theatre Company presents stories inspired by history that connect with today's social and political issues. Our collaborative organization produces provocative theatre and educational programs that engage, entertain and enlighten.

**F**rom the moment in 1997 that six founders each pitched in \$50 to launch this company, TimeLine has worked to become one of Chicago's leading cultural institutions by creating theatre that is more than just a few hours in a seat. Our team of Company Members works collaboratively to present riveting stories that link our past, present, and future—exploring today's social and political issues through the lens of the past and inspiring ourselves to re-imagine tomorrow.



Pat Tiedemann (from left), PJ Powers, and Juliet Hart in TimeLine's inaugural production *SUMMIT CONFERENCE*, 1998.

And the TimeLine experience extends well beyond the stage, encompassing thoroughly researched and interactive lobby experiences, opportunities to discuss the show with artists, ways to take action on whatever the art inspires, and more.

It is a mission unique in Chicago, and beyond.

Now celebrating our 29th season, TimeLine has presented 97 productions, including 16 world premieres and 45 Chicago premieres.

Our work has been recognized in Chicago and beyond: TimeLine received the prestigious 2016 MacArthur Award for Creative and Effective Institutions and has been named "Company of the Year" in *The Wall Street Journal* (2010), one of the American Theatre Wing's top 10 emerging professional theatre companies nationwide (2011) and *Chicago* magazine's "Best Theatre" in the city (2011). And we have been honored with 64 Jeff Awards, including an award for Outstanding Production 11 times.



Jürgen Hooper (from left), Gabrielle Lott-Rogers, PJ Powers, Aurora Adachi-Winter, and Rebekah Ward in *EUREKA DAY*, 2026. (Brett Beiner Photography)

We work to match artistic excellence with sophisticated business management, and these efforts also have been recognized. TimeLine was the first arts organization to receive the Alford-Axelson Award for Nonprofit Managerial Excellence of a small company, and we have received the Association for Strategic Planning's Richard Goodman Strategic Planning Award in the Non-Profit category.

**For more about TimeLine's history and programs, please visit [timelinetheatre.com](http://timelinetheatre.com)**

TimeLine Theatre is a member of the League of Chicago Theatres, Chicago Cultural Alliance, Choose Chicago, Chicago Green Theatre Alliance, Uptown Chamber of Commerce, and Theatre Communications Group (TCG), the national organization for the American theatre.

# LIVING HISTORY

**L**earning and discovery have always been central to TimeLine's mission, driven by our belief that live performance can connect people and illuminate ideas.

Founded in 2006, TimeLine's Living History Education Program brings that mission to Chicago Public Schools, working with students on creative exercises related to historically inspired stories on TimeLine's stage and beyond.

Living History is an arts integration residency that features curriculum designed to teach theatre skills while fostering the capacity to think creatively, to make connections, and to provide new ways of understanding history and the world around us. Over six to 13 sessions, students explore connections between history, art, and their own lives, developing critical thinking and communication skills.

During Living History residencies, TimeLine teaching artists and classroom teachers collaborate on lesson plans that illuminate the themes of the play and their connection to each classroom curriculum. Students work on several scenes from a TimeLine production and are provided with a study guide. They experience visits from the production's actors and dramaturg and attend a student matinee and post-show discussion with the cast.

Since its inception, more than 10,000 students have actively explored history through Living History. TimeLine currently partners with nine schools to present the program.



*Teaching Artist Lexi Saunders with students in the classroom during a Living History residency.*

**“ It made me feel that I was part of that moment  
in history. As if I was experiencing it firsthand. ”  
It made me understand it better.**

*— Living History student*

## TIMELINE SOUTH



*Members of the TimeLine South Ensemble perform their original work SHATTERED in 2025.*

**T**imeLine South—a unique arts program that provides teens a safe space for self-expression, creativity, and ensemble building on the south side of Chicago—just celebrated its 8th anniversary in 2025, and four years in partnership with the Reva and David Logan Center for the Arts. Offered free of charge for six weeks during the summer, TimeLine South promotes leadership in the arts and introduces teens to the idea that theatre can also be a vehicle for social justice.

Major supporters of Living History include Carol Oppenheim and Jerome Lamet Charitable Fund, Crown Family Philanthropies, Laughing Acres Family Foundation, Lloyd A. Fry Foundation, John and Jessica Fullerton, Robert and Eleanor Meyers, Polk Bros. Foundation, and multiple anonymous contributors, as well as the donors to TimeLine's Annual Fund and Step Into Time gala.

# COMPANY MEMBERS

---



*Company Members are the artistic leaders of TimeLine Theatre Company, working collaboratively together to shape the artistic vision and choose the programming for the organization.*

Will Allan | Nick Bowling | Janet Ulrich Brooks  
Behzad Dabu | Charles Andrew Gardner | Lara Goetsch  
Juliet Hart | Anish Jethmalani | Mildred Marie Langford | Mechelle Moe  
David Parkes | Ron OJ Parson | PJ Powers | Maren Robinson | Helen Young

# BOARD OF DIRECTORS

---

Thaddeus J. Malik, *President* | Anne Voshel, *Vice President*  
Shanda McFadden, *Secretary* | Brian Douce, *Treasurer*  
Jennifer Ames | Kate Hurckes Arias | Deborah Cohen | Mica Cole | JoAnne Dobrick  
Lawrence Gill | Michael J. Kennedy | William A. Obenshain | PJ Powers  
Maridee Quanbeck | Mitchell A. Sabshon | John Sterling | Ayisha Tahir  
Richard G. Weinberg | Constance L. Williams | Helen Young

# PRESIDENT'S ADVISORY COUNCIL

---

Alan M. Bell | Michelle T. Boone | Amina Dickerson | Toi Hutchinson  
Alvin Katz | Eileen LaCario | Matthew R. Reilein | Debbie Siegel

# PLAYWRIGHTS COLLECTIVE

---

*TimeLine has an ongoing commitment to developing the work of established as well as emerging playwrights. The Playwrights Collective, founded under the leadership of Ben Thiem and now led by Company Members Anish Jethmalani and Maren Robinson, offers a supportive environment over multiple years for a group of Chicago-based playwrights to develop new plays that are inspired by history and explore the social and political events of today.*

**2026 - 2027 Collective**  
Kimberly Dixon-Mays | Terry Guest | Omer Abbas Salem | Catherine Yu

# STAFF

---

PJ Powers, *Artistic Director* | Mica Cole, *Executive Director*

## ADMINISTRATION

Ted DeLong  
*Managing Director*

Elizabeth K. Auman  
*Director of New Home  
Development*

Trevor Wise  
*Finance Manager*

Stan Hicks  
*Facility Manager*

Hank Boland  
*New Home Project Manager*

Sam Hurwitz  
*Executive Assistant and  
Artistic Coordinator*

## ARTISTIC

Nick Bowling  
*Associate Artistic Director*

Maggie Fullilove-Nugent  
*Director of Production*

Maren Robinson  
*Resident Dramaturg*

Anish Jethmalani  
*Director of  
Playwrights Collective*

## DEVELOPMENT

Miguel Fernández  
*Director of Development*

Rosie Schultz  
*Director of Donor  
Engagement*

Leah Taylor  
*Institutional Giving Manager*

## LIVING HISTORY

Juliet Hart  
*Director of Living History*

Janyce Caraballo  
Ashli Rene Funches  
Charles Andrew Gardner  
Marcus D. Moore  
Lexi Saunders  
*Teaching Artists*

## MARKETING

Lara Goetsch  
*Director of Marketing  
and Communications*

Samanta Cubias  
*Marketing and  
Communications Manager*

Emma Schoenfelner  
*Marketing and  
Communications Assistant*

## AUDIENCE SERVICES

Kellyn Henthorn  
*Audience Services Manager*

Eva Nyman  
*Audience Services and  
Development Assistant*

MJ Krystosek  
*Front of House Lead*

Leo Monts  
*Box Office Lead*

Kosi Achife  
Donyae Asante  
Rob Ascher  
Katie Bevil  
Nat King  
Paulette Maher  
Cailyn Murray  
Krystal Ortiz  
Sarah Patin  
Cara Peterson  
*Audience Services Staff*

## HOSPITALITY

Mitchell Shaw  
*Hospitality Manager*

Dante Aguiar-Rodríguez  
*Assistant Hospitality  
Manager*

---

## CONSULTANT SERVICES

Jay Kelly PR  
*Public Relations*

Porte Brown LLC  
*Audit Services*

Sagin, LLC  
*IT Services*

Sterling Strategies  
*Strategic Management*

## VOLUNTEERS

The Saints  
*Ushering*



*Pictured (clockwise from left): Rendering of TimeLine new home and vertical blade sign at night (HGA); 4th floor History Hallway with named show posters (Ashley Hamm Photography); and the backstage Artist Lounge adjacent to dressing rooms.*

## MAKE HISTORY WITH US!

TimeLine's new home is now open! We are so grateful to everyone who has supported this campaign over many years. Thanks to your support, we have raised more than 93% of our \$46 million goal! **If you have not made a campaign gift yet, join more than 200 fellow TimeLine patrons and friends by making a commitment today!** Your support will help us bring the campaign to a close.

Gifts at every level are appreciated, with special recognition available for major gifts. Pledges of \$10,000 and above could be payable over multiple years. All donors will be recognized in program book and online donor listings and will receive a special TimeLine gift.

- Donors of **\$10,000 and above** will be recognized on our campaign donor wall on the first floor.
- Donors at the **\$25,000** level will receive a special commemorative TimeLine gift.
- Donors at **\$50,000** can join an exclusive group to be recognized in the Artist Lounge backstage.
- Donors at the **\$100,000** level can name a TimeLine show poster from a past production, displayed in our fourth-floor History Hallway
- Donors of **\$200,000** and above are eligible for special naming opportunities in the building.

This once-in-a-lifetime project is a private and public funding partnership. **For more information about naming opportunities or making a multi-year pledge, please contact Miguel Fernández, Director of Development, at [miguel@timelinetheatre.com](mailto:miguel@timelinetheatre.com) or 773.281.8463 x130.**

Explore more about this thrilling project online at [timelinetheatre.com/its-time](http://timelinetheatre.com/its-time).

TimeLine is grateful for the support and confidence shown by the investors in the campaign for our new home.

## \$1 MILLION AND ABOVE

Anonymous (3)  
City of Chicago, Department of  
Planning & Development  
Abe and Ida Cooper Foundation  
Joseph and Bessie  
Feinberg Foundation  
Karen and Jim Frank  
Illinois Arts Council  
Sonia T. Marschak  
Peter and Alicia Pond  
Forum Fund

*Contributing members include:*

*Jim and Karen Frank, Marvin and  
Judy Herb, Richard and Debbie  
Jelinek, John and Judy Keller,  
Jim and Cathie Leider, Barry  
MacLean, Andy McKenna,  
Jeanine and Andrew McNally IV,  
David Moscow, Michael and  
Suzanne Moskow, and Gordon  
and Carole Segal*

## \$250,000 – \$999,999

Anonymous (2)  
The Affelder Weissglass Family  
Paul M. Angell Family Foundation  
Crown Family Philanthropies  
Mary and Bruce Feay  
John and Jessica Fullerton  
Brenda and James Grusecki  
Robert and Eleanor Meyers  
Bill and Penny Obenshain  
Pritzker Traubert Foundation  
TAWANI Foundation  
The Van Dam Charitable Foundation  
Passionflower Foundation

## \$100,000 – \$249,000

Anonymous  
Christine Albright and Lawrence Gill  
Gil and Kate Hurckes Arias  
Judith Barnard and Michael Fain  
Douglas Bradbury  
John A. Cable Foundation  
Rita and John Canning  
Richard and Ann Carr  
Joyce Chelberg  
Joan M. Colmar and Mitchell A.  
Sabshon  
Daniel R. Cyganowski, in memory of  
Dr. Carol K. Cyganowski  
Leonard Gail and Robin Steans  
David Hiller  
Ronald B. Johnson  
John and Judy Keller

Barry MacLean  
Andrew and Jeanine McNally  
Charitable Fund  
Marcelle McVay and Dennis Zacek  
Adrienne Meisel and Rand Sparling  
Helen Morrison, Lois Morrison,  
and Justin Daab  
Jane P. Nerison  
Maridee Quanbeck and Jared Kaplan  
Rhonda Rochambeau  
and Larry Shulman  
Timothy C. Sherck  
Debbie Siegel and Bob Altman  
John Sirek and Colleen Loughlin  
Janet Carl Smith and Mel Smith  
John and Eileen Sterling  
Mary Stowell  
Diane and Richard G. Weinberg

## \$25,000 – \$99,999

Anonymous  
Bob and Trish Barr  
John Bierbusse  
Kay Bucksbaum  
Karen and Jay Case  
James and Patricia Corirossi  
Donna Craven  
JoAnne Dobrick  
William Fritz and Tom Gosline  
Barbara Goodman and  
Seth Weinberger  
Joan and Guy Gunzberg  
Jack and Sandra Guthman  
Dani Jachino  
Alvin and Elizabeth Katz  
Michael and Kathryn Kennedy  
Eileen LaCario and Anthony D'Angelo  
Elaine and Donald Levinson  
Thad and Lisa Malik  
Edward Malone and Kristina Entner  
W.R. and Sandra Manteuffel  
Erica C. Meyer  
Alex and Jen Moeller  
Susan A. Payne  
Glen and Beth Prezempel  
C. James and Karen Prieur  
Phil Rozansky and Theresa Foley,  
in honor of Maridee Quanbeck  
Adnan Rukieh and Becky Folds  
Anita Samen and David Follmer,  
in memory of Daniel Samen  
Follmer and in honor of Sarah Good  
Follmer and Max Robison Follmer  
Tom and Pam Sheffield

Stephanie B. and Gerald A. Smith  
Constance and Hugh Williams  
John and Evonne Yonover

## UP TO \$24,999

Anonymous (3)  
Jonathan Abarbanel  
Susan Abrams  
Helaine Alberts  
Judith Anderson  
Mary and Richard Auman  
Randy and Lorraine Barba  
Lorraine Barba  
Peter and Elizabeth Barrett  
Mary Barrow  
Marcia Baylin  
Kathleen M. Bell  
Susan Berg  
Henry and Leigh Bienen  
Linda Bierig, in memory of Jeff Bierig  
The Robert Thomas Bobins Foundation  
Michelle T. Boone  
William and Mary Kay Bowling  
Nancy Bradt and Laurence Lewis  
Edward J. and Patricia Brown  
Penny Brown and Jeff Rappin  
Patrick Brown  
Sharon Burch  
Edward and Barbara Burnes  
James M. Gill and Fran Chessler  
Shelby Clevenger  
Lisa Coburn  
Deborah Cohen and Tom Silfen  
Ann Cole  
Susan and Jim Colletti  
Joan Conover  
Beverly Ann and Peter Conroy  
Judith Corbeille  
Steven and Michelle Cucchiario  
John and Kitty Culbert  
Char and Larry Damron  
Mark Dannenberg  
Janet Davies and Jeffrey Preston  
Kassie Davis and Bruce Beatus  
John DeBlasio  
Patty L. Delony  
Alyssa Dickman  
Leonora Dickson  
Brian and Marcella Douce  
Linda S Englund  
Providence A. Benedict  
and Carolyn Fay, in  
honor of Nick Bowling  
Elizabeth Foster  
Robert Fourer

# IT'S TIME THE CAMPAIGN FOR TIMELINE'S NEW HOME

Ronda Franks  
Judith French  
Gloria Friedman, in honor  
of Bernie Holicky  
Lloyd A. Fry Foundation  
Virginia Gerst  
Carl Giegold, in memory of  
Patrick Harrington  
Paula A. Golden  
Shelley Gorson and Alan Salpeter  
Julie Graber  
Marion Cameron-Gray and Doug Gray  
Dawn and Rick Gray  
Anthony and Susan Grosch  
Bev Groudine  
Gregory and Elizabeth Hahn  
Willie Hall  
Trish and Harp Harper  
Shannon Hayes  
Lina Flores Hilko  
Thomas and Karen Howell, Jr., in  
honor of Bill and Penny Obenshain  
Jill Hurwitz and Harvey Popolow  
Susan Imus  
Julia and Robert Jackson  
William Jentes  
Gary T. and Susan Johnson  
Bill and Marc Healey Kaufman  
Christopher Kertes  
David and Sharon Kessler  
Neil and Diana King  
Maureen King  
Judy O. Kirk  
Julie Koerner  
Jacqueline Kohn  
Robert and Marcia Kozelka  
Jeffrey Kramer and Janet Kuhn  
The Larrea Family  
Linda Legner

Edina and Alan Lessack  
Karen and Avi Lothan  
Linda Loving and Richard Aaronson  
Daniel Lunney  
Nancy Malitz  
Annette Mambuca  
David Manilow  
Shanda McFadden  
Helen Hall Melchior  
Yasmin Mikhael  
Jeffrey Mono and Steven Greenberg  
Paul J. Much  
Lester Munson  
Jean and Jordan Nerenberg  
Stan and Vivian Nitzberg  
Chris and Prill Nugent  
Becky and Ed O'Connell  
Timothy Ortmann  
Myrna Pedersen  
Jean Perkins and Leland Hutchinson  
Michael and Christine Pope  
Merrilee and Richard Redmond, in  
honor of Peter and Alicia Pond  
David Rhee  
Elizabeth and Tobin Richter  
Tom and Vicki Rivkin  
Helen and Richard Rivkin  
Marjorie Rogasner, William Irons,  
and Julie Irons  
J.T. Rogers and Rebecca Ashley  
Kathleen Ruhl  
Anne and Barry Sabloff  
Jane Nicholl Sahlins  
Jane Santogrossi  
Ann Marie and Christopher Saternus  
Laurence Saviers and Kurt Jolly  
Libby Savner  
Alice and Bob Schloss  
Julie and Robert Schlossberg  
Bobbie and Vernon Schultz

Barry Sears and Kathy Rice  
Iris Sholder  
Fred Siegman and Brenda Wolf  
Jim Simeone  
Adele Simmons  
Lisa Skolnik  
Louise K. Smith  
Thomas and Amata Spencer  
Fund for the Arts  
Nikki and Fred Stein  
Anne and Rich Stockton  
Gail and John Straus  
Susan Strunk  
Lauri & Graydon Booth Sugerman  
Ayisha Tahir  
Greg and Anne Taubeneck  
Elizabeth Teich  
Susan Templeton  
Threshold Acoustics, in memory of  
Patrick Harrington  
Amy and Tony Volpe  
Merrilee and John Waldron  
Kristin Walter  
Tom and Linda White  
Mr. John S. White  
Marc and Tracy Whitehead  
Matilda Wilhoite  
Leslie R Wilson  
Barry and Janie Winkler  
Mary Kay Wysham and  
Stephen Wysham  
Bobbi and Sheldon Zabel  
Thomas and Renée Ziprich

## IN-KIND CONTRIBUTIONS

Nic Dimond  
Andrew Hamm, Greenberg Traurig  
Katten Muchin Rosenman LLP  
Schuler Shook Theatre Planners /  
Lighting Designers



Supporters of the It's Time Capital Campaign alongside members of TimeLine's Board, Company, and Staff celebrate the first event at the new home, which also featured a ceremonial lighting of the vertical marquee blade sign. (Aubrey Jane Photo)

# CORPORATE, FOUNDATION & GOVERNMENT SUPPORT

TimeLine is proud to recognize the corporations, foundations and government entities that support our general operations and Living History Education Program. This list recognizes donations and pledges received April 1, 2025 through April 7, 2026.

ABE AND IDA COOPER  
FOUNDATION

BAYLESS  
FAMILY  
FOUNDATION

BROADWAY  
IN CHICAGO

BULLEY &  
ANDREWS

 CenterPoint  
Energy

CROWN FAMILY  
PHILANTHROPIES

 DCASE  
Department of Cultural Affairs  
and Special Events

Joseph & Bessie  
Feinberg Foundation

Illinois  
ARTS  
Council



Illinois  
Department of Commerce  
& Economic Opportunity  
JB Pritzker, Governor

LAUGHING ACRES  
FAMILY FOUNDATION

LLOYD A. FRY  
FOUNDATION

MacArthur  
Foundation

POLK BROS FOUNDATION  
a foundation for chicago families

PAUL M. ANGELL  
FAMILY FOUNDATION

THE SAINTS  
Volunteers for the Performing Arts

THE SHUBERT  
FOUNDATION INC.

VAN DAM CHARITABLE  
FOUNDATION

WALDER  
FOUNDATION

## \$50,000 and above

Bayless Family Foundation  
Illinois Arts Council  
Paul M. Angell Family Foundation  
The Shubert Foundation  
Walder Foundation

## \$40,000 - \$49,999

Crown Family Philanthropies

## \$30,000 - \$39,999

John D. and Catherine T.  
MacArthur Foundation  
Lloyd A. Fry Foundation  
Polk Bros. Foundation

## \$20,000 - \$29,999

Bulley & Andrews, LLC  
Van Dam Charitable Foundation

## \$10,000 - \$19,999

Abe and Ida Cooper Foundation  
Joseph and Bessie  
Feinberg Foundation  
Illinois Department of Commerce  
& Economic Opportunity  
*TimeLine is proud to produce its  
productions in the State of Illinois*  
Laughing Acres Family Foundation

## \$1,000 - \$9,999

Broadway In Chicago  
CenterPoint Energy  
City of Chicago, Dept. of Cultural  
Affairs and Special Events  
Irving Harris Foundation  
The Saints: Volunteers for  
the Performing Arts  
theatre works!  
Woods Fund of Chicago

## Up to \$999

Abbott Laboratories - EGC  
Actors' Equity Foundation Inc.  
AMC Networks  
Baird and Warner, Inc.  
Gartner  
Nuseed Nutritionals

MacArthur  
Foundation

TimeLine Theatre Company is a recipient of the prestigious  
2016 MacArthur Award for Creative and Effective Institutions.

# HISTORY MAKERS

---

We are honored to recognize TimeLine's History Makers—supporters who make tax-deductible donations of \$1,000 and more annually to support TimeLine's general operations. History Makers help TimeLine continue the Chicago tradition of companies that started small, dreamed big, and developed into prominent arts organizations. Members of the History Makers Society receive exclusive privileges designed to bring our most generous individual supporters closer to the art they make possible. This list includes donations and pledges received April 1, 2025 through April 7, 2026.

## **Producers Circle**

### **\$50,000 and above**

Anonymous (3)  
JoAnne Dobrick  
The Estate of Anne Juhasz  
Peter and Alicia Pond  
Barbara M. Wanke Trust

## **Visionary Circle**

### **\$25,000 and above**

Anonymous  
Mr. Allan E. Bulley, Jr.  
Christine Albright and Larry Gill  
Brenda and James Grusecki  
W.R. and Sandra Manteuffel  
Robert and Eleanor Meyers  
Maridee Quanbeck  
John and Eileen Sterling

## **Innovators Circle**

### **\$15,000 - \$24,999**

Judith Barnard and Michael Fain  
Joyce E. Chelberg  
Deborah Cohen and Thomas Silfen  
James and Patricia Corirossi  
Mary and Bruce Feay  
Kathryn and Michael Kennedy  
Adrienne Meisel and Rand Sparling  
Bill and Penny Obenshain  
Joan Colmar and Mitchell Sabshon

## **Benefactors Circle**

### **\$10,000 - \$14,999**

Doug and Mary Jo Basler  
Philip Cable and  
Jennifer Siegenthaler  
Donna Craven  
Brian and Marcella Douce  
Jack and Sandra Guthman  
Kenneth Jensen  
Amy Matheny and Kiki Haralambides  
Erica C. Meyer  
Jim Moore  
Lois Morrison and Justin Daab  
Burton X. and Sheli Z. Rosenberg  
Phil Rozansky and Theresa Foley, in  
honor of Jerry Kaplan  
Timothy C. Sherck  
Diane and Richard G. Weinberg

## **Leadership Circle**

### **\$5,000 - \$9,999**

Anonymous (2)  
Gil and Kate Hurckes Arias  
Marcia Baylin  
Andrew and Kate Bushey  
Karen and Jay Case  
Susan and Jim Colletti  
Steven and Michelle Cucchiari  
Tarek Fadel  
Jim Frank  
David Hiller  
David and Shirley Holdeman  
Daneen Jachino  
Ronald B. Johnson  
Paul Lazarre and  
Jennifer Ames-Lazarre  
Jen Luerssen  
Thad and Lisa Malik  
Shanda and Kenneth McFadden Jr.  
Jeanine and Andrew McNally IV  
Susan A. Payne  
Jill and Lou Raizin  
David and Judith Sensibar  
Fred Siegman and Brenda Wolf  
John Sirek and Colleen Loughlin  
Oehme and Winslow Soule  
Constance and Hugh Williams  
Helen Young  
Dennis Zacek and Marcelle McVay

## **Ambassadors Circle**

### **\$2,500 - \$4,499**

Jeannie Affelder and Jeff Weissglass  
Cedric Antosiewicz and  
Margaret Gudas  
Mary Barrow  
Henry and Leigh Bienen  
John Bierbusse  
John and Joan Blew  
William and Mary Kay Bowling  
Penny Brown and Jeff Rappin  
David Follmer and Anita Samen  
Lina Flores Hilko  
Jill Hurwitz  
Alvin and Elizabeth Katz  
David and Darlene Landsittel  
Jill and Michael B. Lowe  
Lester Munson  
Sandra Newman

C. James and Karen Prieur  
Steve and Missy Ravid  
Richard Redmond  
Kathy Rice and Barry Sears, in honor  
of Bill and Penny Obenshain  
Anne and Barry Sabloff  
Debra Siegel and Robert Altman  
Lynne Simon  
Janet Carl Smith and Mel Smith  
Ayisha Tahir  
Holly Wathan  
Tom and Linda White  
Marc and Tracy Whitehead  
Matilda Wilhoite  
Barry and Janie Winkler  
Joe and Sandra Wisniewski

## **Investors Circle**

### **\$1,000 - \$2,499**

Tyla Abercrombie  
Elaine Abramson  
Richard and Janice Bail  
Fredrick N. Bates and  
Ellen J. Benjamin  
Shaun and Andy Block  
John and Claudia Boatright  
Benjamin and Kara Bowling  
Douglas Bradbury  
Karen and Richard Brenner  
Kathleen and Rich Brummet  
Deborah Clapp  
Lisa Coburn  
Mimis Cohen and Andrea Biel-Cohen  
Mica Cole and Martin Kamenski  
Terry Cook and John Gosink  
Mary Ann Cronin  
Pamela Crutchfield  
Daniel R. Cyganowski  
Dianne and Doug DeLong  
Patty Delony  
Richard and Vicki DuFour  
Jonathan Eig and Jennifer Tescher  
Michael Elkow  
Barbara French  
Douglas Frew  
Sharon Friedenbach Morris  
Malcolm and Judy Gaynor  
Barbara Goodman and  
Seth Weinberger  
Karen and Merrill Goozner

# HISTORY MAKERS

---

Shelley Gorson and Alan Salpeter, in honor of Debra Siegel	Avi Lothan	Jane Nicholl Sahlins
Dawn and Rick Gray	Irwin Lowenstein	Jane Santogrossi
Paula Grier	Judi Male	Alice Schreyer
Susan Grosch	Edward Malone and Kristina Entner	Paul Siegel
Sandy Guettler	Sylvia and Larry Margolies	Jeffrey Sharp
Gendy and Elizabeth Hahn	Jeremy and Joan Mattson	Kate M. Sheehy
Bernard and Barbara Hart	Steve Meier	Christine A. Slivon
Juliet Hart and Mark Onuscheck	Rick and Barbara Melcher	Toni S. Smith
Martin F. Hauselman	Ernst Melchior	Anne and Richard Stockton
Pat and Chris Hofmann	Barbara Moser	Janet Surkin and Robert Stillman
Thomas and Karen Howell, Jr.	Julia Navarre	Susan Templeton
Noel Jackson	Timothy Ortmann	Linda Teplin
Leah Kaiser	Kalpana Patel	John Tielsch and Deborah Garber
Mark Kendall	Glen and Beth Prezembel	Alston Kirk Twiss and Connie Fairbanks
Pam Kendall	Jeaneane and John Quinn	Stephen and Aida Wahmann
David and Sharon Kessler	Merrilee Redmond	Kristin Walter
Carolyn and Gordon Kirk	Joanna Riopelle	John White
Angela Lang	Maureen Riordan	Mary Kay and Stephen Wysham
Elizabeth and Scott Lassar	Ned and Marsha Robertson	
	Kathleen Ruhl	

# INDIVIDUAL GIVING

---

We're honored to recognize the following individual donors for their tax-deductible gifts in support of TimeLine Theatre. This list recognizes donations and pledges received April 1, 2025 through April 7, 2026. We regret that due to space limitations we are unable to list donors of up to \$99. Please accept our heartfelt thanks and know that every gift makes a difference!

## \$500 - \$999

Anonymous	Liuda Flores	Jeanne LaDuke	Renee Schleicher
The Allen-Perlow Family Fund, in honor of Anish Jethmalani	Adnan Rukieh and Becky Folds	Barbara Lanctot	Saadia Siddique
Susan Allen	Jim Foley	Dale and Bob Lubotsky	Jerry Smith and Dorothy Fugiel
Connie Barkley	Gloria Friedman	Mary Sue Lyon	Stephen Fedo
Michael Bauschelt	Morag Fullilove	Jeff Maniaci	James Staples
Kelly Becker	Richard Gamble	Susan McBride	Nikki and Fred Stein
Ken Belcher and Sandra Ihm	Lauren Garrett	Scott McCausland	Paul and Denise Tennola
William Berg	Lauren Garrett	B. Michael McFarland and Richard Murray	Emily Timmons
Dave and Nicole Berger	Jerry Gately	Michael McGuire	AJ Tomas
Kyle and Marge Bevers	Andrew Gelman	Laurie Merel	Martin Treu
Andy Bezaitis	Candice Goldstein, in memory of Clara Heller	Chuck Meyers	Bryan Vanderhoof
Benita Boettner	Marj Halperin	George Miz	Adrienne Wagner
Maxine Brown	Mary Harris	Laura Mudd	Linda Wagner
Edward and Barbara Burnes	Todd Hensley and Lizanne Wilson	Stanley and Vivian Nitzberg, in honor of Eileen LaCarlo	Merrilee and John T. Waldron
Dr. James Cohn	Kathy Hewitt	Karin O'Connor	Gail and John Ward
John and Kitty Culbert	Ann Courter and Norman M. Hirsch	Ana Ortiz-Monasterio Draa	William Weinsheimer
Kassie Davis and Bruce Beatus	Cynthia Ho	Mary Ann Powers	Kimberly and Thomas Williamson
Suzy DiSanto	Glenn and Patricia Janik	Eva and Gary Quateman	Katherine Wolf
Lisa Disch	Bob and MaryBeth Jirgal	Ed and Susan Ritts	Linda Woloshin
Adrienne and Frank Drell	Chloe Johnston	Julie Robinson	Marty Wright and Therese Smith
Susan Duda	James Klise and Mike Kuras	Jeri and Joel Rothman	John and Linda Zimnie
Deanna Dunagan	Karilyn and Donald Knapp	Tricia Rothschild	Mark and Margie Zivin, in honor of Constance Williams
Marci Eisenstein and John Treece	Judith Kossy	Dr. Robert Henry and Sheila Ryan-Henry	
	Eileen LaCarlo and Tony D'Angelo	Debra Samuelson	

# INDIVIDUAL GIVING

## \$250 - \$499

Heather Amro  
Wendy Anker  
Dan Au  
Marcia Banks  
Randy and Lorraine Barba  
Peggy Bartelstein and  
Bill Gurolnick  
Edward and Elinor Bass  
Kirstin Bement  
Brian Berman  
Marcia and Leon Bernstein  
Catherine and Ronald Bevil  
Joan and Hank Bliss  
Jay W. Boersma and  
Deborah H. Holdstein  
Linda Camras and  
Jerome Seidenfeld  
John Conroy and  
Colette Davison  
Thomas A. Corfman and  
Carol Ann Brook  
Justin Daab  
Lawrence DelPilar  
Alyssa Dickman  
Leonora Dickson  
Ronald Duda  
Michael Edwards  
Jean and Harry Eisenman  
Elaine Foss  
Dan and Ronda Franks  
Judith Freeman  
Richard Gamble  
Kate Gillespie  
Donald and Kathy Goetsch  
Ethel Gofen  
Jill Gordon  
Patsy Grady  
Susan and Peter Gray  
Judie Green  
Judith Griffin  
Ada Mary Gugenheim  
Suzanne High  
Ying Hirsh  
Marvin and Rose Ellen  
Hoffman  
Donald S. Honchell and  
Susan K. Horn  
Susan and Josh Karp  
Dennis and Roberta Kmiec  
Jeffrey Kramer  
and Janet Kuhn  
Laura Lerner  
Paul Lisnek  
Daniel Lunney and  
Marco Bartan  
Robert and  
Margaret McCamant

David and Patricia Meyer  
Gail Murphy  
Ann Nash  
Grace Newton  
Todd Nonken  
Shqiye Osmani  
Pamela and Jeff Prestinario  
Pamela Raia  
Anne Rashford  
Mark Richard and  
Kelly Nespor  
Dr. Sergio and  
Mary Rodriguez  
Roche Schulfer and  
Mary Beth Fisher  
Jennifer Semler  
Lynda and Paul Shadrake  
James Sherman  
Susan H. and  
Charles P. Schwartz, Jr.  
Wendy Silverman  
Neil and Elaine Smith  
Adena Staben  
Caryl Morris Steinberg  
Raymond Stone  
James Swanson  
Nancy Tani  
Martin Till  
Michelle Toussaint  
Shea Townsend  
Merle and Thomas Tresser  
Mike and Linn Ann Tyrrell  
Al Wayne and  
Dr. Lynne Copp  
Nancy Yurek

## \$100 - \$249

Anonymous  
Jonathan Abarbanel  
Marlene D. Adsit  
Kathleen and Leigh Allan  
Michele Allen  
Judith Anderson  
Karen Anderson  
Mary H. Anderson  
Tasha Anderson  
Jacquelyn and Dennis Aron  
Daniel A. Balsam  
Stephanie Banta  
Mary Baranek  
Jeanne and Geoff Barr  
Joe Bass  
Laura Battigelli  
Laurie Bederow  
Carolyn J. Belden  
Daniel Bender  
Katherine Bendix  
Kay Berkson and  
Sidney Hollander

Zina Berman  
Susan Bernstein  
Sandra and Howard Binder  
Dana Black  
Sandra Blau  
Patricia and Edward Blumen  
Bruce Bochner  
Margot Bogue  
Jane Boyle  
Joan Bradbury and Jo  
Anderson  
Nancy Bradt and  
Laurence Lewis  
Jeanne and Walter Braun  
KT Brizek  
Cynthia Brown  
Ralph and Rona Brown  
The Buchman Family  
Brooke Burge  
Pamela Carcerano  
William and Doreen Carey  
Tim Carl  
Sharon Carr  
Katie Page and  
Andrew Carter  
Paulette Cary  
Mary T. Christel  
Robert Clarke  
Michael P. Cohen and  
Lisa A. Goldberg  
Steve Colberg  
John Collins  
Timothy Comar  
Joan Conover  
Betsy Covell  
Avis Crasko  
Judith Crown and  
Richard Rothschild  
Isabel and Bob Curley  
Sydney Daniels  
Camille De Frank  
Roxanne Decyk  
Tracy and Dorie Domeracki  
Dan Dornbrook  
Trucia A. Drummond  
Joseph and Sara Drummond  
Tana Durnbaugh  
Kenneth East and  
Timothy Thurlow  
Robert Edger  
Maureen Egan  
Susan Ehrlich  
Thomas Eley III and  
Victoria Eley  
Arthur Elstein  
Judy Erwin  
Derrick Everett  
Ellen Filurin

Dr. Beatrice Finkelstein  
Jessie Fisher  
Joan Flanagan  
Sarah Follmer  
Mike Foran  
Elizabeth Foster  
Anne Fox  
Jeanne Fujimoto and  
Neil Tesser  
Mark Gastineau  
Peter Gately  
Norden Gilbert and  
Ben Thomas  
Alice Ginsburgh  
David Gitomer  
Eibhlin Glennon  
Jim Goeser  
Richard Goetsch  
Jennifer and Ariel Goldfarb  
Lois and Mel Goldstein  
Sanford Greenberg  
Beverly Groudine  
Susan Haimes  
Laura B. and James Hansen  
Richard Hay, Jr.  
Angeline Heisler  
Ruth Hollander  
Laurie and Werner Huget  
Liz Hurley  
Paul Hybel and  
Elizabeth Raymond  
Susan Imus  
David and Beth Inlander  
Arlene Kaganove, in honor  
of Syril Beskin  
Lyn Sue Kahng  
Laleh Kalantari  
Kathleen Gallo  
Charles L. Katzenmeyer  
Bill and Marc  
Kaufman Healey  
Jay Kelly  
Maureen King  
Phyllis Kipnis  
Mary Kirby  
Catherine Klein  
Jacqueline C. Kohn  
Ann Kolb  
Jan Kralovec  
Steve Kratochwill and  
Martha Erpelding  
Erzsébet Kuettner  
Richard Kurowski  
The Larrea Family  
Thomas and  
Annelise Lawson  
Joel and Christine Lehmann  
Leonora Georgeoglou

# INDIVIDUAL GIVING

Allison and Brad Levin  
Roselind Lindau  
Jane Lippow  
Nancy Malitz and  
Lawrence B. Johnson  
Jeffrey Maniaci  
Morris Mauer  
Whitney McAllister  
McCanns of Montclair  
Bill and Donna McGough  
Jay Meadoway  
William Melamed  
Kristin Merk  
Priscilla Mims  
Mechelle Moe  
Ann Moroney  
John Morse  
Dr. and Mrs. Martin Mozes  
Dr. William and  
Leslie Nelson  
Andre Noel II  
Susan Noel  
Susan O'Brien  
Lyssa Olker  
Mat Olson  
Tracey Olson  
Jason Ott  
Joseph and  
Jo Ann Paszczyk

Myrna Pedersen  
Dave and Carole Perlman  
W. A. Phillips  
Pam Popielarz  
John J. Popik  
Sandra Popik  
Thom Powers and  
Raphaela Neihausen  
Michelle Prestidge  
Jerry Proffit  
Elizabeth Pufunt  
Tom and Donna Ray  
Elspeth Revere and  
Bruce J. Calder  
Alicia Reyes  
Anne-Marie Rhodes  
Lindsay Richards  
Jesse Rivera  
Sue Ann Robinson  
Leah Robinson  
Maren Robinson and  
Rom Barkhordar  
Margie Rogasner  
Carmen Roman  
Marsha and Robert Rosner  
Anne Ryan  
Frank and Karen Schneider  
Dorothy Schroeder

Bobbie and Vernon Schultz  
Elizabeth and Tom Schwartz  
Jean Schwartz  
Sandra Shane-DuBow  
Iris Sholder  
Asia Siddique  
PC Gooden-Smiley  
Chelsea Smith  
Wayne Smith  
Margaret Snow  
Ronnie Jo Sokol  
William Solomon  
Unmi Song  
Richard and Nancy Spain  
David and Laraine Spector  
Susan Stodolsky  
Susan Strunk  
Drs. David and  
Pratima Stuhldreher  
Lauri Sugerman and  
Graydon Booth  
William Tedford  
Ari and Orly Telisman  
Kathy Tholin and  
Steven Starr  
Ronald Thomas  
Donna Tickman  
Jane Tufts  
Brian Turner

Alden Vasquez  
Sally A. Wallace  
Terri Washington  
Elfriede Wedam  
Joan Weiss  
Magnes Welsh  
Rick Wenzel  
Neva West  
Nancy Whitehead  
Sharon A. Wild  
Kathy Willhoite  
and Rodd Zolkos  
Ann Wise  
Judy Wise  
Bruce and Ruth Woll  
Valerie J. Woods  
Laura Woods  
Virgil Woods  
Dean A. Yannias  
Jill Zucker

*TimeLine is grateful for every contribution received. We regret that due to space limitations we are unable to list donors of up to \$99. Please accept our heartfelt thanks and know that every gift makes a difference!*

We strive to keep our donor lists accurate and up-to-date at all times. Please contact Eva Nyman, Audience Services & Development Assistant, at 773.281.8463 x128 with any questions or concerns.

## IN-KIND DONORS

We are pleased to recognize these organizations and individuals who have supported TimeLine through the donation of goods and services in the amount of \$1,000 and above from April 1, 2025 through April 7, 2026.

### **\$1,000 and above**

Blue Daring  
Broadway in Chicago  
Bulley & Andrews  
The Chicago Hotel Collection  
JoAnne Dobrick

HMS Media  
Michael and Kate Kennedy  
Sharon and David Kessler  
Eileen LaCaro and Tony D'Angelo  
Thad and Lisa Malik  
Bill and Penny Obenshain

PJ and Shelley Powers  
The Ritz-Carlton, Chicago  
Phil Rozansky and Theresa Foley  
Mitchell Sabshon and Joan Colmar  
John Yonover  
M. Elizabeth Zeigler

## INTERESTED IN DONATING TIME?

On occasion, TimeLine offers opportunities to assist with events and other projects. To sign up to receive volunteer notices, please visit [timelinetheatre.com/volunteer](http://timelinetheatre.com/volunteer).

# STEP INTO TIME GALA

We are honored to recognize the leadership sponsors who contributed to TimeLine's Step Into Time benefit on April 26, 2025. TimeLine is also grateful to those who purchased tickets, auction prizes, and raffle tickets to support Step Into Time.

## \$25,000 Lead Sponsors

Joseph & Bessie

### Feinberg Foundation

Bill and Penny Obenshain

## \$15,000 Platinum Sponsors

Christine Albright and Larry Gill

## \$10,000 Gold Sponsors

Kate Hurckes Arias and Gil Arias

JoAnne Dobrick

Maridee Quanbeck

Van Dam Charitable Foundation

Diane and Richard G. Weinberg

## \$7,000 Silver Sponsors



Michael and Kate Kennedy

Mitchell Sabshon and Joan Colmar

## \$5,000 Bronze Sponsors



Deborah Cohen and Thomas Silfen

Brian and Marcella Douce

Thad and Lisa Malik

Shanda McFadden and

Kenneth McFadden Jr.

John and Eileen Sterling

Ayisha Tahir

Constance and Hugh Williams

## Cocktail Sponsor

Kate Hurckes Arias and Gil Arias

## Décor Sponsor

Erica C. Meyer

# STEP INTO HOLIDAY TIME

We are honored to recognize the leadership sponsors who contributed to TimeLine's Step Into Holiday Time fundraiser on December 5, 2025. TimeLine is also grateful to those who purchased tickets, auction prizes, and raffle tickets to support Step Into Holiday Time.

## \$25,000 Champagne Sponsors

Bill and Penny Obenshain

## \$15,000 Sweets Sponsor

Van Dam Charitable Foundation

## \$10,000 Scones Sponsors

Broadway In Chicago

John Sirek and Colleen Loughlin

## \$7,500 Savory Sponsors

Lawrence Gill and Christine Albright

Michael and Kathryn Kennedy

Maridee Quanbeck

## \$5,000 Tea Cup Sponsors

Jennifer Ames and Paul Lazarre

InterPark

Eileen LaCario and Tony D'Angelo

Amy Matheny and Kiki Haralambides

Mitchell Sabshon and Joan Colmar

Debbie Siegel and Robert Altman

## Décor Sponsor

Erica C. Meyer, in honor of

Bill and Penny Obenshain

## Entertainment Sponsors

Kate Hurckes Arias and Gil Arias

Brian and Marcella Douce

# INAUGURAL OPENING NIGHT GALA

We are honored to recognize supporters of our Inaugural Opening Night Gala on May 15, 2026. TimeLine is also grateful to those who purchased auction prizes and raffle tickets to support this fundraising event. Details as of April 27, 2026.

## CO-CHAIRS

Bill and Penny Obenshain

Peter and Alicia Pond

Anne Voshel

## SPONSORS

### Lead Sponsors

Peter and Alicia Pond

### Gold Sponsors

Bill and Penny Obenshain

Pritzker Traubert Foundation

John and Eileen Sterling

Van Dam Charitable Fund

### Silver Sponsors

Debbie Siegel and Bob Altman

## Bronze Reception Sponsor

JoAnne Dobrick

HGA

Joseph and Bessie Feinberg Foundation

## Friend Reception Sponsors

Bulley & Andrews

Chapman & Cutler

Jim and Karen Frank

Shanda McFadden

Erica C. Meyer

Ayisha Tahir

## Circle Reception Sponsors

Broadway In Chicago

Deborah Cohen and Thomas Silfen

Brian and Marcella Douce

W.R. and Sandra Manteuffel

PJ and Shelley Powers

Merrilee and Richard Redmond

John Sirek and Colleen Loughlin

## HOST COMMITTEE

Deborah Cohen and Thomas Silfen

Brian and Marcella Douce

Michael and Kate Kennedy

Thad and Lisa Malik

Pritzker Traubert Foundation

Maridee Quanbeck

Merrilee and Richard Redmond

Mitchell Sabshon and Joan Colmar

Debbie Siegel and Bob Altman

John and Eileen Sterling

Ayisha Tahir

Diane and Richard G. Weinberg

Constance and Hugh Williams

We regret that due to space limitations, we are unable to list everyone who contributed to these events.

Please accept our heartfelt thanks and know that your participation made a difference!