

# PLAYBILL®

BROADWAY  
PLAYHOUSE  
AT WATER TOWER PLACE

## EUREKA DAY



**Timeline**  
Theatre Company

---

BROADWAY  
PLAYHOUSE  
AT WATER TOWER PLACE

---

**BROADWAY IN CHICAGO**

A Nederlander presentation  
Lou Raizin, President & CEO  
Eileen LaCario, Senior Vice President

---



---

**EXPLORING TODAY THROUGH THE LENS OF THE PAST**

---

artistic director **PJ Powers** | executive director **Mica Cole**

CHICAGO PREMIERE

**EUREKA  
DAY**

by **Jonathan Spector**  
directed by **Lili-Anne Brown, SDC**

scenic designer **Collette Pollard, U.S.A.^**  
costume designer **Yvonne L. Miranda, U.S.A.**  
lighting designer **Jason Lynch, U.S.A.**  
sound designer **Willow James, U.S.A.**  
properties designer **Amy Peter**  
projections designer **Paul Deziel, U.S.A.**  
dramaturg **DeRon S. Williams**  
stage manager **JC Widman\***

featuring **Aurora Adachi-Winter, Caroline Chu\*, Jürgen Hooper\*,  
Gabrielle Lott-Rogers\*, PJ Powers\*\*+, and Rebekah Ward\***

---

**January 21 – February 22, 2026 (previews 1/13 – 1/20)**

---

*Eureka Day* is presented by special arrangement with Broadway Licensing, LLC,  
servicing the Dramatists Play Service imprint. ([www.dramatists.com](http://www.dramatists.com))

Originally commissioned and produced by Aurora Theatre Company  
(Tom Ross, Artistic Director; Julie Saltzman Kellner, Managing Director), Berkeley, CA



The Director is a member of the  
**STAGE DIRECTORS AND CHOREOGRAPHERS  
SOCIETY**, a national theatrical labor union.



\* Member of Actors'  
Equity Association, the  
union of professional actors  
and stage managers

Those designers and scenic  
artists identified by U.S.A. are  
members of United Scenic Artists,  
IATSE Local 829, AFL-CIO



Backstage Employees  
are represented by the  
International Alliance  
of Theatrical Stage  
Employees (or IATSE.).

---

# CAST

(in order of appearance)

Aurora Adachi-Winter .....	Meiko
Jürgen Hooper* .....	Eli
Rebekah Ward* .....	Suzanne
PJ Powers*+ .....	Don
Gabrielle Lott-Rogers* .....	Carina
Caroline Chu* .....	Winter

UNDERSTUDIES: Caroline Chu (*Meiko*), Harmony France (*Suzanne*), Niko Kourtis (*Eli*), Alexandria Alyse Moorman (*Carina/Winter*), and Anthony Whitaker (*Don*). Understudies will never substitute for a listed player unless an announcement is posted at the performance.

\* Member of Actors' Equity Association, the union of professional actors and stage managers.

+ TimeLine Company Member

---

# PRODUCTION TEAM

Assistant Director .....	Raquel Torre
Assistant Stage Manager .....	Kate Nagorski
Intimacy Director .....	Greg Geffrard
Associate Properties Designer .....	Paloma Locsin
Associate Projections Designer .....	Meghan Erxleben
Assistant Scenic Designer .....	Lucie Greene
Assistant Costume Designer .....	Janelle Smith
Assistant Sound Designer .....	Aaron Woodstein
Assistant Dramaturg .....	Grace Herman
Scenic Charge Artist .....	Jessica Kuehnau Wardell
Scenic Supervisor .....	James Doolittle
Assistant Scenic Supervisor .....	Axel Adams
Costume Supervisor .....	Lucy Elkin
Assistant Costume Supervisor .....	Finnegan Chu
Wign & Hair Coordinator .....	Megan E. Pirtle
Lighting Supervisor .....	Mark Brown
Projections Supervisor .....	Chris Owens

---

# THE CONVERSATION

TimeLine Theatre is dedicated to exploring today's social and political issues through the lens of the past. We share information and provide inspiration for conversation through our *Backstory* magazine, interactive lobby experiences, discussion events, videos, and more.

Explore more about online discussions held during the run of *Eureka Day*—plus all the resources available—via the QR Code at right, or visit [timelinetheatre.com/eureka-lobby](http://timelinetheatre.com/eureka-lobby).



PLUS! TimeLine Theatre is on Facebook, Instagram, and YouTube at @TimeLineTheatre. Don't forget to tag us and use the hashtag #EurekaDay and/or #TimeLineTheatre.



**PLAYBILL**

BROADWAY PLAYHOUSE 3

# WHO'S WHO



**AURORA WINTER** (*Meiko*) is making her TimeLine debut. Past credits include *Lucy & Charlie's Honeymoon* (Looking-glass); *Lottery Day and Nightwatch* (Goodman); *Red Rex* (Steep); *Put Your House in*

*Order* (The Roustabouts); *Vietgone* (Writers); *The Burials* (Steppenwolf); *Peerless, Edith Can Shoot Things and Hit Them* (First Floor Theater, Company Member). Film and TV credits include *Enough: Reckoning with Redress*, *Chicago Med*, *Electric Dreams*, *Deep Woods*. Aurora is represented by Gray Talent Group.



**CAROLINE CHU** (*Winter, Meiko U/S*) is thrilled to be working with TimeLine for the first time. Off-Broadway: *The Play That Goes Wrong*. Chicago credits include *Short Shakespeare! Macbeth* (Chicago Shakespeare); *And Then*

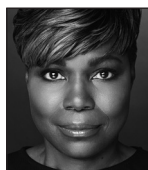
*There Were None* (Drury Lane); *Cambodian Rock Band* (Victory Gardens); and *Peerless* (First Floor Theater). Regional and international credits include *Sense and Sensibility* and *The Chinese Lady* (Indiana Repertory Theatre), *Richard III* (Prague Shakespeare Company). Proud Chicagoan, graduate of Northwestern University, and company member at First Floor Theater. Massive thanks to the most supportive family and friends in the world! Instagram: @carolinechu\_



**JÜRGEN HOOPER** (*Eli*) returns to TimeLine, where he was previously seen in 2007's *Paradise Lost*. Broadway: *Brighton Beach Memoirs*. National Tour: *The Lion King*. Chicago credits include *Billie Jean*, *Red Velvet*, *Ama-*

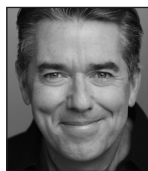
*deus*, *Romeo & Juliet*, *Comedy of Errors* (Chicago Shakespeare); *Life & Limb* and *Huck Finn* (Steppenwolf); *Rabbit Hole* (Goodman); *Isaac's Eye* and *The Chosen* (Writers); *The Hard Problem* (Court); *The Audience*, *The 39 Steps*, *A Christmas Carol* (Drury Lane); *What's Wrong with Angry?* (Circle Theatre, Non-Equity Jeff

Award – Actor in a Principal Role). Regional credits include *The 39 Steps*, *The Mousetrap*, *The Game's Afoot* (Indiana Repertory Theatre); *The 39 Steps* (Syracuse Stage); *Wanamaker's Pursuit* (Arden Theatre Company); *The Cherry Orchard* (Milwaukee Repertory Theatre). Film and TV credits include *Game Day*, *Chicago Med*, *Crisis*, *Chicago Fire*, and *Suits*.



**GABRIELLE LOTT-ROGERS** (*Carina*) is overjoyed to return to TimeLine where she last portrayed Hattie McDaniel in the world premiere of *Boulevard of Bold Dreams*. Other recent theatre credits include *Nina Simone:*

*Four Women* (Milwaukee Repertory/Kansas City Repertory); *Bust* and *The Nacirema Society* (Goodman). Chicago credits include *1776* (Marriott), *The Most Spectacularly Lamentable Trial of Miz Martha Washington* and *Downstate* (Steppenwolf); *The Spitfire Grill – a musical* (American Blues); and *Ethiopianamerica* (Definition Theatre). Select TV/ film credits include *Emperor of Ocean Park*, *Chicago P.D.*, *Proven Innocent*, *The Chi*, *Southside with You* and several national commercials. Gabrielle is a proud member of AEA and SAG-AFTRA, and is represented by DDO Artists Agency Chicago. Special thanks to family and friends for their unwavering support. *Psalms 34:1*.



**PJ POWERS** (*Don, Time-Line Artistic Director*) was a co-founder of TimeLine in 1997 and became Artistic Director in 1999. On stage, he's appeared in 19 TimeLine productions, including *The Lifespan of a Fact*, *The Apple*

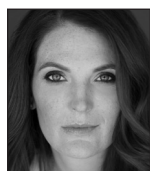
*Family Plays*, *The Front Page*, *The Farnsworth Invasion*, *Fiorello!*, *All My Sons*, *Hauptmann*, *Not About Nightingales*, and *Gaslight*, and he directed the Chicago premiere of J.T. Rogers' *One Giant Leap: The Apollo 11 Moon Landing* in a one-night TimeLine event at the Broadway Playhouse. As TimeLine Theatre's Artistic Director, he has overseen the production of more than 90 plays, including 16 world premieres and more than 40 Chicago premieres. During his



PLEASE NOTE: The videotaping or making of electronic or other audio and/or visual recordings (including photographs) of this production or distributing recordings on any medium, including the internet, is strictly prohibited, a violation of the author's rights and actionable under United States copyright law.

# WHO'S WHO

tenure, TimeLine has garnered 64 Jeff Awards, including 11 for Outstanding Production, as well as awards for excellence in arts management, including the 2016 MacArthur Award for Creative and Effective Institutions. PJ was instrumental in establishing TimeLine's longtime home on Wellington Avenue in 1999; expanding the company's programming to include productions in numerous other venues, including the Broadway Playhouse; creating the TimePieces play reading series and First Draft Festival of new work; and leading the campaign for TimeLine's new home in Uptown. A graduate of The Theatre School at DePaul University, PJ has served on the Board of Directors for the League of Chicago Theatres and received a Goldman Sachs Senior Fellowship at the Smithsonian National Museum of American History.



## REBEKAH WARD

(*Suzanne*) is thrilled to be making her debut with TimeLine Theatre! Previous credits include work with Drury Lane, Goodman, Steppenwolf, Northlight, Indiana Repertory, The House, Oak Park Festival

Theatre, and Remy Bumppo. She received a Joseph Jefferson Citation (Actress in a Principal Role – Play) for her work as Sabina in *The Skin of Our Teeth*, as well as a Joseph Jefferson Citation nomination (Actress in a Supporting Role – Play) for her role as Edna in *Waiting for Lefty* (Backstage Theatre Company). Rebekah's film/television credits include multiple guest star roles on *Chicago Med*, *Chicago P.D.*, and *Masters of Sex*. Additional credits include *Chicago Fire*, *Empire*, *Shameless*, and *Sam & Cat*. She is represented theatrically and commercially by Stewart Talent, as well as Grossman & Jack Talent for voiceover.

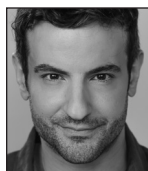


## HARMONY FRANCE

(*Suzanne U/S*) makes her TimeLine debut in *Eureka Day*. She traveled the world with the national/international Broadway tour of *Sister Act*. She has received three Jeff Award nominations

and a Broadway World Award. Her Chicago credits include work with Paramount, Writers, Peninsula Players, and Porchlight. She studied Opera at Brenau University in Georgia, Acting at Columbia College Chicago, Shakespeare at the Royal Academy of Dramatic Arts in London, and earned an MA degree from the

California Institute of Integral Studies in Social Justice. She is the founding artistic director of Firebrand Theatre.



## NIKO KOURTIS (*Eli U/S*)

returns to TimeLine, where he was previously seen in *The Normal Heart* and *My Name is Asher Lev*. Other credits include *White* (Definition / Steppenwolf); *Angels in America* (Kansas City Rep-

ertory); *Love in the Time of Jonestown* (New Coordinates); *Elizabeth Rex* (Oak Park Festival Theatre); *Homos, or Everyone in America* (PrideArts); *Animals Commit Suicide* (First Floor Theater); *Three Days of Rain* (BoHo Theatre); *The Assembled Parties* (Raven Theatre); and *Bent* (The Other Theatre Company). He is represented by Grossman & Jack Talent.



## ALEXANDRIA ALYSE MOORMAN

(*Carinal Winter U/S*) is honored to make her TimeLine debut! A Chicago-based multi-hyphenated artist, collaborator, advocate, and amplifier of marginalized voices,

she received her BFA degree in Acting from Emerson College in Boston. Chicago credits include the Jeff-awarded *What to Send Up When It Goes Down* (Best Ensemble Short Run, Congo Square/Lookingglass); *American Son* (Fleetwood Jourdain); *A Hit Dog Will Holler* (Artemesia); and *Cullud Wattah* (Victory Gardens). She's the Development Director at Chicago Artist Guide, whose mission is to diversify Chicago theatre. She's appeared in several regional commercials, internationally awarded short films, and the sketch series *Collaborate and Listen* (Rm. 19 Productions) and *The Blackside* (Congo Square) now streaming on YouTube. She's represented by Shirley Hamilton. Visit [alexandriaalysemoorman.com](http://alexandriaalysemoorman.com).



## ANTHONY WHITAKER

(*Don U/S*) is making their TimeLine debut. They recently wrote and performed *Sign of the Traveler* (Rhino Fest and Steppenwolf's Lookout Series) and appeared in *Anything Goes* (Porchlight), *Cabaret* (Metropolis), and *La Cage Aux Folles* with Ginger Minj (Music Theater Works). Anthony is founder and Co-Artistic Director of



---

# WHO'S WHO

the New American Folk Theatre ([newamericanfolktheatre.org](http://newamericanfolktheatre.org)). They can be seen in the films *Shape Notes* and *The Caretaker*, and has appeared on *Chicago P.D.* They are represented by Big Mouth Talent.

**JONATHAN SPECTOR** (*Playwright*) is a Tony Award-winning playwright based in Northern California whose work has been produced on and off Broadway, regionally, and internationally. His plays include *Eureka Day* (2025 Tony Award for Best Revival of a Play, 2025 Drama League Award and 2025 Drama Desk Award for Outstanding Revival of a Play); *This Much I Know* (Edgerton Award, Glickman Award, Bay Area Theater Critics Circle Award); *Birthright*; *Best Available* (Elizabeth George Commission); and *Siesta Key*. His work has been produced with Manhattan Theater Club, The Old Vic, Sonia Friedman Productions, Aurora Theater, Marin Theater Company, Pasadena Playhouse, Hampstead, Theater J, Asolo Rep, Syracuse Stage, Mosaic Theater, Colt Couer and Miami New Drama, among others. He is currently working on commissions for Manhattan Theater Club, Roundabout and La Jolla Playhouse.

**LILI-ANNE BROWN** (*Director*) is a Chicago South Side native who works as a director, actor and educator, and has performed in, directed and produced many award-winning shows in Chicago and nationally. She was the director of TimeLine's 2018 co-production of *Caroline, or Change* with Firebrand Theatre. She is the former Artistic Director of Bailiwick Chicago, where she focused programming on Chicago-premiere musicals and new play development with resident playwrights. She has received two Helen Hayes Awards, five Jeff Awards, two BTA awards and one African American Arts Alliance Award for excellence in directing. She is an inaugural recipient of the Walder Foundation's Platform Award and a 2021 recipient of the 3Arts Award for Theatre. She is a member of SDC, AEA, SAG-AFTRA, and a graduate of Northwestern University. Visit [liblrownchicago.com](http://liblrownchicago.com).

**COLLETTE POLLARD** (*Scenic Designer*) is thrilled to return to TimeLine, where she is an Associate Artist and where her credits include *The Lehman Trilogy*, *A Shayna Maidel*, *Inana*, *Danny Casolaro Died For You*, *The How and the Why*, *Blood and Gifts*, *The Front Page* (Jeff Award), *A House With No Walls* and *Tesla's Letters*. Other Chicago credits include *Gaslight* (Northlight); *Rome Sweet Rome* (Chicago

Shakespeare); Dennis Watkins' *The Magic Parlour* (in partnership with Goodman Theatre and Petterino's); *Fen*, *Orlando*, and *The Illusion* (Court); *Inherit the Wind*, *Roe*, and *The Wolves* (Goodman); *The Dance with Death*, *Describe the Night*, and *Hir* (Steppenwolf); *Frederick and Me*; *Merized* (Chicago Children's Theatre); *Titanic*, *Beehive*, *Gypsy*, *Big Fish*, and *The Sound of Music* (Marriott). Recent and upcoming regional credits include *Fat Ham* (Oregon Shakespeare Festival), *Fannie* (Indiana Repertory); *Little Women* (Seattle Repertory and Milwaukee Repertory); *The Legend of Georgia McBride* (Milwaukee Repertory and Arizona Theatre Company); *What the Constitution Means to Me*, *Steel Magnolias*, *Eclipsed*, and *The Chinese Lady* (Milwaukee Repertory); *The Cake* (Asolo Repertory). Collette is the recipient of several Jeff Awards and is an Associate Professor of Design at the School of Theatre and Music at UIC. Many thanks to the endless support from her family. Visit [collettepollard.com](http://collettepollard.com).

**YVONNE L. MIRANDA** (*Costume Designer*) is excited to make her debut at TimeLine Theatre Company. She is not only a U.S. Marine Corps disabled combat war veteran, but also a 2022 nominee of the Helen Hayes Award for Best Costume Design for *Ain't No Mo* and January's 2023 American Theatre's Role Call People to Watch. *Big White Fog* (Court); *She Who Dared* (Chicago Opera Theatre); *Hymn* (Chicago Shakespeare); *Leroy and Lucy* (Steppenwolf); *Primary Trust* (Goodman); *Sweat*, *Hand to God*, *Next to Normal* and *Little Shop of Horrors* (Paramount); *The Hot Wing King* (Writers). Off Broadway: *The Knight of the Burning Pestle* (Red Bull Theatre, Fiasco Theatre). Visit [yvonnemirandadesigns.com](http://yvonnemirandadesigns.com).

**JASON LYNCH** (*Lighting Designer*) returns to TimeLine, where he previously designed *Boulevard of Bold Dreams* and *Kill Move Paradise* (Black Theatre Alliance Award winner). Additional Chicago credits include work with Chicago Shakespeare, Court, Goodman, Northlight, Shattered Globe, Steppenwolf, Writers, among others. Recent regional credits include work with Alley Theatre, Alliance Theatre, Berkeley Repertory Theatre, Geva, Great Lakes, Guthrie, Huntington Theatre Company, Kansas City Repertory Theatre, Milwaukee Repertory Theatre, The Old Globe, Oregon Shakespeare Festival, Seattle Rep, and Signature Theatre. Jason is represented by The Gersh Agency. Visit [jasonlynch.com](http://jasonlynch.com). Instagram: [@jasonlynch.design](https://www.instagram.com/jasonlynch.design).

---

# WHO'S WHO

**WILLOW JAMES** (*Sound Designer*) is a Chicago-based arts leader, DJ, and multidisciplinary artist working in photography, sound design, and composition. He currently serves as Civic Engagement Director at Definition Theatre (where he is also an ensemble member), a teaching artist with Court Theatre and Adjunct Faculty at DePaul University. TimeLine: *Hundreds and Hundreds of Stars*. Chicago: *You Will Get Sick* (Steppenwolf), *Fat Ham* (Goodman/Definition); *A Raisin in the Sun* (Court); *The Hot Wing King* (Writers); *Hymn* (Chicago Shakespeare). Regional: TheatreSquared, American Players Theatre, Next Act Theatre, Alleyway Theatre, and others. Representation: Michael Moore Agency. Visit [worksbywillow.com](http://worksbywillow.com). Instagram: [@worksbywillow](https://www.instagram.com/worksbywillow).

**AMY PETER** (*Properties Designer*) returns to TimeLine, having previously designed props for *The Lehman Trilogy*, *What the Constitution Means to Me*, *Oslo*, *Cardboard Piano*, *The Audience*, and *The Price*. She spends most of her time as the Props Supervisor at The Theatre School at DePaul University. Past credits include *When Harry Met Rehab* and *Tilikum* (Sideshow). Before her time at DePaul, she was the Props Director at Chicago Shakespeare Theater, Triad Stage (Greensboro N.C.), and an assistant at The Dallas Theater Center and The Skylight Music Theatre (Milwaukee). She has her BFA degree in Technical Theatre from The University of Wisconsin-Milwaukee's Professional Theatre Training Program.

**PAUL DEZIEL** (*Projections Designer*) is working with TimeLine for the first time. Based in Chicago, Paul's work has been seen at Goodman, The Muny, Asolo Rep, Alabama Shakespeare Festival, Paramount, En Garde Arts, The Vineyard Theatre, Court, Lookingglass, American Blues Theater, The Neo-Futurists, Jackalope Theatre Company, Mosaic Theatre Company, and many others. Paul holds an MFA degree in Projection and Multimedia Design from the University of Maryland. He is a proud artistic affiliate with American Blues Theater and a member of United Scenic Artists Local 829. Visit [pauldezuel.com](http://pauldezuel.com)

**DERON S. WILLIAMS** (*Dramaturg*) is excited to return to TimeLine Theatre. He is a freelance director and dramaturg and an Assistant Professor of Theatre at Loyola University Chicago. Dramaturgy credits include *Notes from the Field*, *The Lehman Trilogy*, *Trouble in Mind*, and *Boulevard of Bold Dreams* (TimeLine); and

*Toni Stone* (Goodman). His directing and associate directing credits include *White Christmas* and *1776* (Marriott); *Timonia @ Nashville* (Lifeline); *Trouble in Mind* (TimeLine); *Fairview* (Loyola University Chicago); and *The Exonerated* (Spectrum Theatre, Providence, RI). He holds a BA degree in Theatre from Albany State University, an MA in Arts Administration from Eastern Michigan University, and a PhD degree in Theatre from Texas Tech University. Visit [deronswilliams.com](http://deronswilliams.com).

**JC WIDMAN's** (*Stage Manager*) Chicago credits include *Turret* and *The Cave* (A Red Orchid), *Dracula* and *Macbeth* (Drunk Shakespeare), *Gorgeous* (Raven), *In the Heights* (Marriott), *Radial Gradient* (Shattered Globe), *Cinderella* (Paramount), *The Color Purple* (Drury Lane), *Always... Patsy Cline*, *The Queen of the Mist*, *Caroline, or Change*, and *9 to 5 The Musical* (Firebrand). Regional credits include *Once on This Island* and *King John* (Oregon Shakespeare Festival). Touring credits include *The Empire Strips Back* and *Alex Edelman's Just for Us*. JC is a proud member of AEA.

**RAQUEL TORRE** (*Assistant Director*) is a theater-maker from Puerto Rico. Most recently, she was the choreographer for TimeLine's *Hundreds and Hundreds of Stars*. Raquel was the 2024-25 Goodman Theatre Michael Maggio Directing Fellow, and since 2013 has co-led La Vuelta Theatre Lab. Select Chicago directing credits include *Book Up!* and *The Lizard y El Sol* (Goodman); *Memorabilia* (Teatro Vista); *Kid Prince* and *Pablo* (Lifeline Theatre); and *Back in the Day* (UrbanTheater Company). Select assistant direction credits include *Bust*, *Betrayal*, and *Inherit the Wind* (Goodman), and *POTUS* (Steppenwolf). She holds a BA in Theatre from the Universidad de Sagrado Corazón (Puerto Rico), a certificate in Movement and Devised Theatre from Cabuía Teatro (Argentina), and an MFA in Devised Performance Practice from LISPA/Columbia College Chicago (Germany/USA). Read more at [raqueltorre.com](http://raqueltorre.com).

**KATE NAGORSKI** (*Assistant Stage Manager*) returns to TimeLine after previously working on *Hundreds and Hundreds of Stars*. Assistant stage management credits include *Frida ... A Self Portrait*, *Every Brilliant Thing*, *Eurydice*, and *Pearl's Rollin' with the Blues* (Writers); *Carmela Full of Wishes* (Chicago Children's); and *Sundown*, *Yellow Moon* (Raven). Kate has also worked backstage at Court, Marriott, Northlight, Paramount, and Drury Lane.

---

---

# WHO'S WHO

**MICA COLE** (*TimeLine Executive Director*) was named TimeLine's Executive Director in April 2022. A Chicago native raised on the South Side, she has worked as an arts administrator and changemaker for nearly two decades. Most recently, she has been a national consultant providing executive coaching and strategic planning for cultural institutions working to embrace an antiracist leadership paradigm. Mica is a consultant with artEquity, a nonprofit organization that provides tools, training, and resources for individuals and organizations working at the intersection of art and activism. She co-led its BIPOC Surviving Predominantly White Institutions Series and the BIPOC Leadership Circle—both aimed at providing resources and mentorship to leaders of color. Prior to her work as an organizational consultant, Mica served eight seasons as the Repertory Producer at the

Oregon Shakespeare Festival. As a senior leader at OSF, she played a key role in guiding the company's equity, diversity, and inclusion initiatives, many of which now serve as foundational organizational models for institutions around the world. Mica has produced more than 80 shows, including a dozen transfers and national co-productions of new plays with theatres such as American Repertory, Seattle Repertory, South Coast Rep, Arena Stage, Portland Center Stage, and Berkeley Repertory. She worked in Chicago as the Executive Director of Free Street Theater and as the Director of Education and Engagement at Writers Theatre. Mica served on the advisory committee for the Latinx Theatre Commons and is a founding member of the Black Theatre Commons. She is a graduate of The Theatre School at DePaul University.

---

---

## CREW

Scenic Artists ..... José Alexander, Shannon Evans  
Scenic Carpenters ..... Kayne Bowling, Nora Evison, Aspen Lear, Aubrey Pierce  
Electricians ..... Quinn Chisenhall, Josiah Croegaert, Alex Rhyan

---

---

## SPECIAL THANKS

This production owes special thanks to numerous individuals and organizations for their time, talents and support, including The 4529 Prop Shop; 4Wall Entertainment (Ray Woods); Aria Rental (Ray Nardelli); Big Image Systems (John Bloom); Broadway Playhouse House Crew, Wardrobe, Journeymen, and Apprentices; The Chicago Green Theatre Alliance; Chicagoland Truck Rental; Emmanuel Jimenez; JRLX (Jason Reberski); The Lyric Opera Of Chicago (Michael Smallwood & Maria DeFabo Akin); Northlight Theatre (Emily Kneer, Colleen Schuldeis, & Matt Super); Northwest Drapery (Matt Schoeff); Open Books Chicago; Averi Paulsen; Porchlight Music Theatre (Michael Weber); and The Theatre School at DePaul University (Dominic DiGiovanni & Amy Peter).

This program includes production details as of December 22, 2025. For the latest information about everyone involved with TimeLine's Chicago premiere production of *Eureka Day*, please visit our website at [timelinetheatre.com/eureka-program](http://timelinetheatre.com/eureka-program).

**TimeLine Theatre Company | Administrative Offices: 5539 N. Broadway, Suite B | Chicago, IL 60640  
773.281.TIME (8463) | [timelinetheatre.com](http://timelinetheatre.com)**



---

# ABOUT TIMELINE THEATRE

## OUR MISSION

TimeLine Theatre Company presents stories inspired by history that connect with today's social and political issues. Our collaborative organization produces provocative theatre and educational programs that engage, entertain and enlighten.

From the moment in 1997 that six founders each pitched in \$50 to launch this company, TimeLine has worked to become one of Chicago's leading cultural institutions by creating theatre that is more than a few hours in a seat. Our team of Company Members works collaboratively to present riveting stories that link our past, present, and future—exploring today's social and political issues through the lens of the past and inspiring ourselves to re-imagine tomorrow. And the TimeLine experience extends well beyond the stage, encompassing meticulously researched and interactive lobby experiences, opportunities to discuss the show with artists, ways to take action on whatever the art inspires, and more.

It is a mission unique in Chicago, and beyond.

Now celebrating our 29th season, our work has been recognized in Chicago and beyond: TimeLine received the prestigious 2016 MacArthur Award for Creative and Effective Institutions and has been named "Company of the Year" in *The Wall Street Journal* (2010), one of the American Theatre Wing's top 10 emerging professional theatre companies nationwide (2011) and *Chicago* magazine's "Best Theatre" in the city (2011). And we have been honored with 64 Jeff Awards, including an award for Outstanding Production 11 times.

---

## LIVING HISTORY PROGRAM

Founded in 2006, the Living History Education Program brings TimeLine's mission to Chicago Public Schools, working with students on creative exercises related to historically inspired stories on TimeLine's stage and elsewhere in literature. During arts integration residencies, students explore connections between history, art, and their own lives, developing critical thinking and communication skills.

In 2018, Living History launched a new program, TimeLine South—a unique summer arts program that provides teens a safe space for self-expression, creativity, and ensemble building on the south side of Chicago.

---

## IT'S TIME: A NEW HOME

TimeLine is laying the foundation for our next era. After more than 25 years of adapting within rented facilities, we're establishing a theatrical hub in Chicago's vibrant Uptown neighborhood. Far more than just a theatre, this inviting and accessible facility will be a welcoming gathering space for entertainment, education, and community engagement.

Joining other venerable performance venues in the historic Uptown Entertainment District, TimeLine's new home—opening in Spring 2026—will feature an intimate black box theater seating up to 250 audience members, expanded area for the immersive lobby experiences that are a TimeLine hallmark, new opportunities for education and engagement, room to allow audience members to arrive early and stay late, and more.

To explore more about this thrilling project—including interior and exterior design renderings, construction updates, and ways you can support this once-in-a-lifetime moment, check out our *Backstory* magazine (which accompanied this *Playbill*), or visit [timelinetheatre.com/its-time](http://timelinetheatre.com/its-time).

**For more about TimeLine's history and programs, please visit [timelinetheatre.com](http://timelinetheatre.com)**

As we continue our milestone 29th season with *Eureka Day*, TimeLine Theatre Company is continuing the extraordinary legacy of Chicago theater companies that started small, dreamed big, and matured into prominent institutions that enrich the city's cultural landscape. We thank all those who have worked with and supported us along the remarkable timeline of our story so far and look forward to everything that is to come!

---

# ABOUT TIMELINE THEATRE

**COMPANY MEMBERS** ..... Will Allan, Nick Bowling, Janet Ulrich Brooks  
Behzad Dabu, Charles Andrew Gardner, Lara Goetsch,  
Juliet Hart, Anish Jethmalani, Mildred Marie Langford, Mechelle Moe,  
David Parkes, Ron OJ Parson, PJ Powers, Maren Robinson, Helen Young

*Company Members are the artistic leaders of TimeLine Theatre Company, working collaboratively together to shape the artistic vision and choose the programming for the organization.*

**BOARD OF DIRECTORS** ..... Thaddeus J. Malik (*President*), Anne Voshel (*Vice President*),  
Shanda McFadden (*Secretary*), Brian Douce (*Treasurer*),  
Jennifer Ames, Kate Hurckes Arias, Deborah Cohen, Mica Cole, JoAnne Dobrick, Lawrence Gill,  
Michael J. Kennedy, William A. Obenshain, PJ Powers, Maridee Quanbeck, Mitchell A. Sabshon,  
John Sterling, Ayisha Tahir, Richard G. Weinberg, Constance L. Williams, Helen Young

**PRESIDENT'S ADVISORY COUNCIL** ..... Alan M. Bell, Michelle T. Boone,  
Amina Dickerson, Toi Hutchinson, Alvin Katz,  
Eileen LaCario, Matthew R. Reilein, Debbie Siegel

## STAFF

Artistic Director ..... PJ Powers  
Executive Director ..... Mica Cole

### Artistic

Associate Artistic Director ..... Nick Bowling  
Director of  
Production ..... Maggie Fullilove-Nugent  
Resident Dramaturg ..... Maren Robinson  
Director of Playwrights  
Collective ..... Anish Jethmalani

### Living History

Director of Living History ..... Juliet Hart  
Teaching Artists ..... Janyce Caraballo,  
Ashli Rene Funches, Charles Andrew Gardner,  
Marcus D. Moore, Lexi Saunders,  
Ana Velazquez, Jordan David Wallace

### Administration

Managing Director ..... Ted DeLong  
Director of New  
Home Development ..... Elizabeth K. Auman  
Finance Manager ..... Trevor Wise  
Facility Manager ..... Stan Hicks  
New Home Project Manager ..... Hank Boland  
Executive Assistant and  
Artistic Coordinator ..... Sam Hurwitz

### Development

Director of Development ..... Miguel Fernández  
Director of Donor Engagement ..... Rosie Schultz  
Institutional Giving Manager ..... Leah Taylor

### Marketing

Director of Marketing  
and Communications ..... Lara Goetsch  
Marketing and  
Communications Manager ..... Samanta Cubias  
Marketing and Communications  
Assistant ..... Emma Schoenfelner

### Audience Services

Audience Services Manager ..... Kellyn Henthorn  
Audience Services and  
Development Assistant ..... Eva Nyman  
Front of House Lead ..... MJ Krystosek  
Audience Services Staff ..... Kosi Achife,  
Katie Bevil, Nat King, Leo Monts,  
Cailyn Murray, Sarah Patin, Cara Peterson

### Consultant Services

Public Relations ..... Jay Kelly PR  
Audit Services ..... Porte Brown LLC  
IT Services ..... Sagin, LLC  
Strategic Management ..... Sterling Strategies

**ASSOCIATE ARTISTS** ..... Jared Bellot, Brian Sidney Bembridge, Eva Breneman,  
William Brown, Aaron Carter, Andrew Carter, Louis Contey,  
Charles Cooper, John Culbert, Mikhail Fiksel, Megan Geigner, Dennis William Grimes,  
Terry Hamilton, Andrew Hansen, Jerod Haynes, Josephine Kearns, Kymberly Mellen,  
Danica Monroe, Keith Parham, André Pluess, Collette Pollard, Mark Richard,  
Chris Rickett, Kimberly Senior, Demetrios Troy, Mike Tutaj, Ann Wakefield, Alex Weisman

**PLAYWRIGHTS COLLECTIVE** ..... Kimberly Dixon-Mays, Terry Guest,  
Omer Abbas Salem, Catherine Yu

*The Playwrights Collective offers a supportive environment over two years for a group of Chicago-based playwrights to develop new plays that are inspired by TimeLine's mission.*

# IT'S TIME: THE CAMPAIGN FOR TIMELINE'S NEW HOME

TimeLine is grateful for the support and confidence shown by the investors in the campaign for our new home. For more information, visit [timelinetheatre.com/its-time](http://timelinetheatre.com/its-time).

## \$1 Million+

Anonymous (3)  
Abe and Ida Cooper Foundation  
Joseph and Bessie Feinberg Foundation  
Karen and Jim Frank  
Sonia T. Marschak  
Peter and Alicia Pond  
Forum Fund

### *Contributing members include:*

Jim and Karen Frank, Marvin  
and Judy Herb, Richard and  
Debbie Jelinek, John and  
Judy Keller, Jim and Cathie  
Leider, Barry MacLean, Andy  
McKenna, Jeanine and Andrew  
McNally IV, David Moscow,  
Michael and Suzanne Moscow,  
Gordon and Carole Segal

## \$250,000 - \$999,999

Anonymous (2)  
The Affelder Weissglass Family  
Paul M. Angell Family Foundation  
Crown Family Philanthropies  
Mary and Bruce Feay  
John and Jessica Fullerton  
Brenda and James Grusecki  
Robert and Eleanor Meyers  
Bill and Penny Obenshain  
Pritzker Traubert Foundation  
TAWANI Foundation  
The Van Dam Charitable Foundation

## \$100,000 - \$249,999

Anonymous  
Christine Albright and Lawrence Gill  
Gil and Kate Hurckes Arias  
Judith Barnard and Michael Fain  
Douglas Bradbury  
John A. Cable Foundation  
Rita and John Canning  
Richard and Ann Carr  
Joyce Chelberg  
Joan M. Colmar and  
Mitchell A. Sabshon  
Daniel R. Cyganowski, in memory of  
Dr. Carol K. Cyganowski  
Leonard Gail and Robin Steans  
David Hiller  
Ronald B. Johnson  
John and Judy Keller  
Barry MacLean  
Andrew & Jeanine McNally  
Charitable Fund  
Marcelle McVay and Dennis Zacek  
Adrienne Meisel and Rand Sparling  
Helen Morrison, Lois Morrison &  
Justin Daab  
Jane P. Nerison  
Maridee Quanbeck and Jared Kaplan  
Rhonda Rochambeau and  
Larry Shulman  
Timothy C. Sherck  
Debbie Siegel and Bob Altman  
John Sirek and Colleen Loughlin  
Janet Carl Smith and Mel Smith  
John and Eileen Sterling  
Mary Stowell  
Diane and Richard G. Weinberg

## \$25,000-\$99,999

Anonymous (2)  
Bob and Trish Barr  
Kay Bucksbaum  
Karen and Jay Case  
James and Patricia Corirossi  
Donna Craven  
JoAnne Dobrick  
William Fritz and Tom Gosline  
Barbara Goodman and Seth Weinberger

Joan and Guy Gunzberg  
Jack and Sandra Guthman  
Dani Jachino  
Alvin and Elizabeth Katz  
Michael and Kathryn Kennedy  
Eileen LaCario and Anthony D'Angelo  
Elaine and Donald Levinson  
Thad and Lisa Malik  
Edward Malone and Kristina Entner  
W.R. and Sandra Manteuffel  
Erica C. Meyer  
Alex and Jen Moeller  
Susan A. Payne  
C. James and Karen Prieur  
Phil Rozansky and Theresa Foley, in  
honor of Maridee Quanbeck  
Adnan Rukieh and Becky Folds  
Anita Samen and David Follmer, in  
memory of Daniel Samen Follmer  
and in honor of Sarah Good Follmer  
and Max Robison Follmer  
Tom and Pam Sheffield  
Stephanie B. and Gerald A. Smith  
Constance and Hugh Williams  
John and Evonne Yonover

## Up to \$24,999

Anonymous (3)  
Jonathan Abarbanel  
Susan Abrams  
Mary and Richard Auman  
Randy and Lorraine Barba  
Peter and Elizabeth Barrett  
Mary Barrow  
Marcia Baylin  
Kathleen M. Bell  
Susan Berg  
Henry and Leigh Bienen  
Linda Bierig, in memory of Jeff Bierig  
The Robert Thomas Bobins Foundation  
Michelle T. Boone  
William and Mary Kay Bowling  
Nancy Bradt and Laurence Lewis  
Edward J. and Patricia Brown  
Patrick Brown  
Edward and Barbara Burnes  
James M. Gill and Fran Chessler  
Lisa Coburn  
Deborah Cohen and Tom Silfen  
Ann Cole  
Susan and Jim Colletti  
Beverly Ann and Peter Conroy  
Steven and Michelle Cucchiaro  
John and Kitty Culbert  
Char and Larry Damron  
Janet Davies and Jeffrey Preston  
Kassie Davis and Bruce Beatus  
John DeBlasio  
Patty L. Delony  
Lloyd A. Fry Foundation  
Leonora Dickson  
Brian and Marcella Douce  
Providence A. Benedict and Carolyn  
Fay, in honor of Nick Bowling  
Elizabeth Foster  
Gloria Friedman, in honor of  
Bernie Holicky  
Virginia Gerst  
Carl Giegold, in memory of  
Patrick Harrington  
Paula A. Golden  
Shelley Gorson and Alan Salpeter  
Marion Cameron-Gray and Doug Gray  
Dawn and Rick Gray  
Anthony and Susan Grosch  
Gregory and Elizabeth Hahn  
Trish and Harp Harper

Lina Flores Hilko  
Thomas and Karen Howell, Jr., in  
honor of Bill and Penny Obenshain  
Jill Hurwitz and Harvey Popolow  
Julia and Robert Jackson  
William Jentes  
Gary T. and Susan Johnson  
David and Sharon Kessler  
Neil and Diana King  
Judy O. Kirk  
Robert and Marcia Kozelka  
Jeffrey Kramer and Janet Kuhn  
The Larrea Family  
Linda Legner  
Edina and Alan Lessack  
Karen and Avi Lothan  
Linda Loving and Richard Aaronson  
Nancy Malitz  
David Manilow  
Shanda McFadden  
Jeffrey Mono and Steven Greenberg  
Paul J. Much  
Lester Munson  
Jean and Jordan Nerenberg  
Stan and Vivian Nitzberg  
Chris and Prill Nugent  
Becky and Ed O'Connell  
Timothy Ortmann  
Jean Perkins and Leland Hutchinson  
Michael and Christine Pope  
Glen and Beth Prezembel  
Jeffrey Rappin and Penny Brown  
Merrilee and Richard Redmond, in  
honor of Peter and Alicia Pond  
David Rhee  
Elizabeth and Tobin Richter  
Tom and Vicki Rivkin  
Helen and Richard Rivkin  
Marjorie Rogasner, William Irons,  
and Julie Irons  
J.T. Rogers and Rebecca Ashley  
Kathleen Ruhl  
Anne and Barry Sabloff  
Jane Nicholl Sahlins  
Jane Santogrossi  
Ann Marie and Christopher Saternum  
Laurence Saviers and Kurt Jolly  
Libby Savner  
Alice and Bob Schloss  
Julie and Robert Schlossberg  
Bobbie and Vernon Schultz  
Barry Sears and Kathy Rice  
Adele Simmons  
Lisa Skolnik  
Louise K. Smith  
Nikki and Fred Stein  
Anne and Rich Stockton  
Gail and John Straus  
Lauri & Graydon Booth Sugerman  
Ayisha Tahir  
Greg and Anne Taubeneck  
Elizabeth Teich  
Susan Templeton  
Threshold Acoustics, in memory  
of Patrick Harrington  
Thomas and Anata Spencer  
Fund for the Arts  
Amy and Tony Volpe  
Merrilee and John Waldron  
Kristin Walter  
Mr. John S. White  
Marc and Tracy Whitehead  
Matilda Wilhoite  
Barry and Janie Winkler  
Mary Kay Wysham and  
Stephen Wysham  
Bobby and Sheldon Zabel  
Thomas and Renée Zippich

**PLAYBILL**

---

# CORPORATE, FOUNDATION, AND GOVERNMENT SUPPORT

TimeLine is proud to recognize the corporations, foundations and government entities that generously support our general operations and Living History Education Program. This list includes support for operations and programming throughout TimeLine's 2025-26 season.

**ABE AND IDA COOPER  
FOUNDATION**

**BAYLESS FAMILY  
FOUNDATION**

**BROADWAY  
IN CHICAGO**

**BULLEY &  
ANDREWS**

**CROWN FAMILY  
PHILANTHROPIES**



Joseph & Bessie  
**Feinberg Foundation**

**GENERATIONS OF  
GIVING FOUNDATION**

**Illinois  
ARTS  
Council**



**Illinois  
Department of Commerce  
& Economic Opportunity**  
JB Pritzker, Governor

**LAUGHING ACRES  
FAMILY FOUNDATION**

**LLOYD A. FRY  
FOUNDATION**

**MacArthur  
Foundation**

**Carol Oppenheim and  
Jerome Lamet Charitable Fund**

**POLK BROS FOUNDATION**  
a foundation for chicago families

**PAUL M. ANGELL  
FAMILY FOUNDATION**

**THE  
SHUBERT  
FOUNDATION INC.**

**VAN DAM CHARITABLE  
FOUNDATION**

**WALDER  
FOUNDATION**

## **\$50,000 and above**

Bayless Family Foundation  
Illinois Arts Council Agency  
Illinois Department of Commerce  
& Economic Opportunity  
*TimeLine is proud to produce its  
productions in the State of Illinois*  
Paul M. Angell Family Foundation  
The Shubert Foundation  
Van Dam Charitable Foundation  
Walder Foundation

## **\$40,000 - \$49,999**

Crown Family Philanthropies

## **\$30,000 - \$39,999**

John D. and Catherine T.  
MacArthur Foundation

Lloyd A. Fry Foundation  
Polk Bros. Foundation

## **\$20,000 - \$29,999**

Bulley & Andrews, LLC  
Joseph and Bessie Feinberg Foundation

## **10,000 - \$19,999**

Abe and Ida Cooper Foundation  
Carol Oppenheim and Jerome Lamet  
Charitable Fund  
Laughing Acres Family Foundation

## **\$1,000 - \$9,999**

Broadway In Chicago  
City of Chicago, Dept. of Cultural  
Affairs and Special Events  
Generations of Giving Foundation

Irving Harris Foundation  
The Saints: Volunteers for the  
Performing Arts  
Woods Fund of Chicago

## **Up to \$999**

Actors' Equity Foundation Inc.

## **Employer Matching Gifts**

*These companies have matched  
their employee's contributions.*  
Abbott Laboratories - EGC  
AMC Networks  
Gartner  
Nuseed Nutritionals

---

# HISTORY MAKERS

We are honored to recognize TimeLine's History Makers—supporters who make tax-deductible donations of \$1,000 and more annually to support TimeLine's general operations. Members of the History Makers Society receive exclusive privileges designed to bring our most generous individual supporters closer to the art they make possible. This list includes donations and pledges received December 1, 2024 through December 8, 2025.

## **Producers Circle**

### **\$50,000 and above**

Anonymous (2)  
JoAnne Dobrick  
The Estate of Anne Juhasz  
Adrienne Meisel and Rand Sparling  
Barbara M. Wanke Trust

## **Innovators Circle**

### **\$15,000 - \$24,999**

Gil and Kate Hurckes Arias  
Joyce E. Chelberg  
Deborah Cohen and Thomas Silfen  
Mary and Bruce Feay  
Kathryn and Michael Kennedy  
Bill and Penny Obenshain  
Peter and Alicia Pond  
John and Eileen Sterling

## **Benefactors Circle**

### **\$10,000 - \$14,999**

Anonymous, in honor of Bill and  
Penny Obenshain  
Philip Cable and Jennifer Siegenthaler  
Brian and Marcella Douce  
Phil Rozansky and Theresa Foley, in  
honor of Jerry Kaplan  
Joan Colmar and Mitchell Sabshon  
Timothy C. Sherck  
Debra Siegel and Robert Altman  
Mary Stowell

## **Leadership Circle**

### **\$5,000 - \$9,999**

Mary Barrow  
Karen and Jay Case

Susan and Jim Colletti  
James and Patricia Corirossi  
Michelle and Steven Cucchiaro  
Jack and Sandra Guthman  
David Hiller  
David and Shirley Holdeman  
Kenneth Jensen  
Ronald B. Johnson  
Jen Luerssen  
Thad and Lisa Malik  
Jeanne Martineau  
Amy Matheny and Kiki Haralambides  
Shanda and Kenneth McFadden Jr.  
Jeanine and Andrew McNally IV  
Erica C. Meyer  
Marsha Mrtek  
Lou and Jill Raizin  
Burton X. and Sheli Z. Rosenberg  
Fred Siegman and Brenda Wolf  
John Sirek and Colleen Loughlin

**PLAYBILL**

# HISTORY MAKERS

Ayisha Tahir  
Alston Kirk Twiss and  
Connie Fairbanks  
Anne Voshel  
Constance and Hugh Williams  
Helen Young  
Dennis Zacek and Marcelle McVay

## **Ambassadors Circle**

**\$2,500 - \$4,999**

Jeanne Affelder and Jeff Weissglass  
Cynthia Barnard and Len Grossman,  
in honor of Judith Barnard and  
Michael Fain  
John Bierbusse  
John and Joan Blew  
Penny Brown and Jeff Rappin  
Kathryn Clarke and Bill Kaplan  
Adnan Rukieh and Becky Folds  
David Follmer and Anita Samen  
James M. Gill and Fran Chessler  
Lina Flores Hilkio  
Daneen Jachino  
Alvin and Elizabeth Katz  
David and Darlene Landsittel  
Jill and Michael B. Lowe  
Sandra Newman  
Susan A. Payne  
C. James and Karen Prieur  
Jeanne Judelson Quinn and  
John Quinn  
Steve and Missy Ravid  
Kathy Rice and Barry Sears  
Anne and Barry Sabloff  
David and Judith Sensibar  
Lynne Simon  
Barry and Janie Winkler  
Joe and Sandra Wisienski

## **Investors Circle**

**\$1,000 - \$2,499**

Tyla Abercrombie  
Elaine Abramson  
Cedric Antosiewicz and Margaret  
Gudenos  
Frederick N. Bates  
and Ellen J. Benjamin  
Kyle and Marge Bevers

Henry and Leigh Bienen  
Shaun and Andrew Block  
John and Claudia Boatright  
Benjamin and Kara Bowling  
William and Mary Kay Bowling  
Douglas Bradbury  
Karen and Richard Brenner  
Kathleen and Rich Brummet  
Andrew and Kate Bushey  
Deborah Clapp  
Lisa Coburn  
Mimis Cohen and Andrea Biel-Cohen  
Mica Cole and Martin Kamenski  
Terry Cook and John Gosink  
Mary Ann Cronin  
Pamela Crutchfield  
Daniel R. Cyganowski  
Dianne and Doug DeLong  
Patty Delony  
Richard and Vicki DuFour  
Barbara French  
Douglas Frew  
Sharon Friedenbach Morris  
Candice Goldstein and Abraham  
Steinberg  
Barbara Goodman and Seth  
Weinberger  
Karen and Merrill Goozner  
Shelley Gorson and Alan Salpeter  
Dawn and Rick Gray  
Ken and Paula Grier  
Susan Grosch  
Sandy Guettler  
Gregory and Elizabeth Hahn  
Bernard and Barbara Hart  
Juliet Hart and Mark Onuscheck  
Martin F. Hauselman  
Norman M. Hirsch and Ann Courter  
Blair Hofmann  
Rick Hudson  
Jill Hurwitz  
Noel Jackson  
Greg Jorjorian and Marlys Conrad  
Mark Kendall  
Pam Kendall  
Carolyn and Gordon Kirk  
Angela Lang  
Elizabeth and Scott Lassar  
Paul Lazarre and Jennifer  
Ames-Lazarre  
Avi Lothan  
Irwin Lowenstein  
Mary Sue Lyon  
Edward Malone and Kristina Entner  
Sylvia Margolies  
Sylvia and Larry Margolies  
Jeremy and Joan Mattson  
Steve Meier  
Rick and Barbara Melcher  
Ernst Melchior  
Laurie Merel  
Kristin Merl  
Barbara Moser  
Julia Navarre  
Denise Nitterhouse  
Timothy Ortmann  
Kalpana Patel  
PJ and Shelley Powers  
Glen and Beth Prezemel  
Merrilee and Richard Redmond  
Joanna Riopelle  
Ned and Marsha Robertson  
Kathleen Ruhl  
Alice Schreyer  
Paul Siegel  
Jeffrey Sharp  
Christine A. Slivon  
Toni S. Smith  
Janet Carl Smith and Mel Smith  
Oehme and Winslow Soule  
Richard and Nancy Spain  
David and Laraine Spector  
Nikki and Fred Stein  
Anne and Richard Stockton  
Janet Surkin and Robert Stillman,  
in honor of Debbie Siegel and Bob  
Altman  
Susan Templeton  
John Tielsch and Deborah Garber  
Kristin Walter  
Holly Wathan  
John White  
Tom and Linda White  
Mary Kay and Stephen Wysham

# INDIVIDUAL GIVING

We're honored to recognize the following individual donors for their tax-deductible gifts in support of TimeLine Theatre. This list recognizes donations and pledges received December 1, 2024 through December 8, 2025. We regret that due to space limitations we are unable to list donors of up to \$99.

## **\$500 - \$999**

The Allen-Perlow Family Fund,  
in honor of Anish Jethmalani  
Susan Allen  
Anonymous  
Richard and Janice Bail  
Connie Barkley  
Ken Belcher and Sandra Ihm  
William and Susan Berg  
Dave and Nicole Berger  
Kay Berkson and Sidney  
Hollander  
Andy Bezaitis  
Linda Bierig  
Sandra Blau  
Jay W. Boersma and  
Deborah H. Holdstein  
Maxine Brown  
Leonora Dickson  
Suzy DiStanno  
Michael Elkow  
Jim Foley  
Morag Fullilove  
Richard Gamble  
Jerry Gately  
Andrew Gelman  
Camillo and Arlene Ghiron  
Ethel Gofen

Patsy Grady  
Judith Griffin  
Julie Hamos  
Todd Hensley and Lizanne  
Wilson  
Diane Hires and William  
Crowther  
Cynthia Ho  
Donald S. Honchell and  
Susan K. Horn  
Thomas and Karen Howell, Jr.  
Glenn and Patricia Janik  
Bob and MaryBeth Jirgal  
Leah Kaiser  
David and Sharon Kessler  
James Klise and Mike Kuras  
Dennis and Roberta Kmiec  
Karilyn and Donald Knapp  
Eileen LaCario and  
Tony D'Angelo  
Jeanne LaDuke  
Beth Loeb, in honor of  
Larry Gill  
Dale and Bob Lubotsky  
Jeff Maniaci  
Susan McBride  
Robert and Margaret McCamant  
Scott McCausland  
Chuck Meyers  
George Miz  
Laura Mudd  
Karin O'Connor  
Larry and Becky Peyton  
Mary Ann Powers  
Eva and Gary Quatemam  
Tricia Rothschild  
Debra Samuelson  
Jane Santogrossi  
Mary Ann and Bob Savard  
Roche Schuller and  
Mary Beth Fisher  
Katherine Sexton  
Kate M. Sheehy  
Saadia Siddique  
Jerry Smith  
Stephen Fedo  
Adena Staben  
James Staples  
Paul and Denise Tennola  
Ron and Dee Tevonian  
AJ Tomas

Bryan Vanderhoof  
Adrienne Wagner  
Linda Wagner  
Bill and Lauren Waight  
Merrilee and John T. Waldron  
Gail and John Ward  
Diane and Richard G. Weinberg  
William Weinsheimer  
Katherine Wolf and Susan  
Mindell, in honor of  
Michael Kennedy  
Linda Woloshin  
Laura Woods  
Mark and Margie Zivin  
**\$250 - \$499**  
Dan Au  
Marcia Banks  
Randy and Lorraine Barba  
Peggy Bartelstein and  
Bill Gurolnick  
Edward and Elinor Bass  
Michael Bauschelt  
Marcia Baylin  
Brian Bernan  
Marcia and Leon Bernstein



# INDIVIDUAL GIVING

Benita Boettner  
Cynthia Brown  
Karen Budd and Ben Friedman  
Crystal and Tom Bush  
Linda Camras and  
Jerome Seidenfeld  
Paulette Cary  
Dr. James Cohn  
John Conroy and Colette  
Davison  
Thomas A. Corfman and  
Carol Ann Brook  
Justin Daab  
Mark Dannenberg  
Lawrence DelPilar  
Alyssa Dickman  
Ronald Duda  
Susan Duda  
Michael Edwards  
Miguel Fernandez  
Michelle Fire  
Elizabeth Foster  
Susan Foster  
Gloria Friedman  
Richard Gamble  
Sharon Glazer  
Donald and Kathy Goetsch  
Lara Goetsch  
Susan Gray  
Judie Green  
Margaret Griffiths  
Mary Gugenheim  
Kathy Hewitt & Anne Fay  
Suzanne High  
Ying Hirsch  
Marvin Hoffman and  
Rose Ellen Brown  
Susan and Josh Karp  
The Larrea Family  
Laura Lerner  
Lorna Luebbers  
B. Michael McFarland and  
Richard Murray  
Lester Munson  
Gail Murphy  
Ann Nash  
Dr. William and Leslie Nelson  
Grace Newton  
Todd Nonken  
Shiqipe Osmani  
Elliot Popowitz  
Thom Powers and  
Raphaela Neihausen  
Pamela and Jeff Prestinario  
Dan and Liz Pufunt  
Pamela Raia  
Anne Rashford  
Elspeth Revere and  
Bruce Calder  
Alicia Reyes  
Mark Richard and Kelly Nespor  
Dr. Sergio and Mary Rodriguez  
Marjorie Rogasner and  
William Irons  
Dr. Robert Henry  
Renée Schleicher  
Jennifer Semler  
James Sherman  
Susan H. and  
Charles P. Schwartz, Jr.  
Wendy Silverman  
PC Gooden-Smiley and  
Larry Smiley  
Caryl Steinberg  
Raymond Stone  
Susan Strunk  
Sue Suchy  
James Swanson  
Usman Tahir  
Nancy Tani  
Martin Till  
Ann Tomlinson  
Michelle Toussaint  
Shen Townsend  
Mike and Linn Ann Tyrrell  
Tali and Liat Tzur  
Theofano Vamvlas

Al Wayne and Dr. Lynne Copp  
Kimberly and  
Thomas Williamson  
Nancy Yurek  
John and Linda Zimmie  
**\$100 - \$249**  
Jonathan Abarbanel  
Marlene D. Adsit  
Kathleen and Leigh Allan  
Michele Allen  
Kimball R. and  
Karen Gatsis Anderson  
Tasha Anderson  
Jackie and Dennis Aron  
Daniel A. Balsam  
Mary Baranek  
Judith Barnard  
and Michael Fain  
Jeanne and Geoff Barr  
Laurie Bederow  
Kirstin Bement  
Katherine Bendix  
Zina Berman  
Susan Bernstein  
Dana Black  
Joan and Hank Bliss  
Patricia and Edward Blumen  
Bruce Bochner  
Margot Bogue  
Donald and Nancy Borzak  
Jane Boyle  
Nancy Bradt and  
Laurence Lewis  
Jeanne and Walter Braun  
Barbara Breakstone  
KT Brizek  
Ralph and Rona Brown  
Lisa and Jonathan Buchman  
Brooke Burge  
Michael Burkett  
Marion Cameron-Gray  
William and Doreen Carey  
Tim Carl  
Sharon Carr  
Andrew Brian Carter  
and Katie Page  
Lesley Chok  
Mary T. Christel  
Robert Clarke  
Steve Colberg  
John Collins  
Timothy Comar  
Betsy Covell  
John Covell  
Judith Crown and  
Richard Rothschild  
Kim Dale  
Sydney Daniels  
Michele de St. Aubin  
Lisa Disch  
Dorie Domeracki  
Dan Dornbrook  
Tricia A. Drummond  
Joseph and Sara Drummond  
Kenneth East and  
Timothy Thurlow  
Robert Edger  
Maureen Egan  
Jennifer Tescher and  
Jonathan Eig  
Thomas Eley III and  
Victoria Eley  
Linda Englund  
Derrick Everett  
Marillyne Felderman  
Ellen Filtrun  
Dr. Beatrice Finkelstein  
Jessie Fisher  
Marcia Flick  
Sarah Follmer  
Mike Foran  
Elaine Foss  
Eloise C. Foster  
Elizabeth Foster  
Anne Fox  
Dan and Ronda Franks

Jeanne Fujimoto and Neil Tesser  
Mark Gastineau  
Peter Gateley  
Norden Gilbert and Ben Thomas  
Paul Gillen  
Alice Ginsburgh  
Eibhlin Glennon  
Richard Goetsch  
Jennifer and Ariel Goldfarb  
Lois and Mel Goldstein  
Jill and Brad Gordon  
Barry and Merle Gross  
Beverly Grouidine  
Susan Haimes  
James Hansen  
Meghan Harkins  
Patrick Hartney  
Judith S. Hausner  
Linda Henderson  
Sherry and Arnold Hirsch  
Ruth Hollander  
Liz Hurley  
Elliott and Robyn McMurray  
Hurtig  
Paul Hybel and Elizabeth  
Raymond  
David and Beth Inlander  
Sharon Jedel  
Jim and Pat Jocius  
Arlene Kaganove  
Lyn Sue Kahng  
Laleh Kalantari  
Sandra Kaspar  
Antje Kastner-Panya  
Kathleen Gallo  
Charles Katzenmeyer  
Marc Kaufman and  
William Healey  
Jay Kelly  
Kate Kennedy  
Kathleen Kilbane and  
Larra Clark  
Colby and Chad Kingsbury  
Phyllis Kipnis  
Mary Kirby  
Catherine Klein  
Jacqueline C. Kohn  
Norman Kohn  
Ann Kolb  
Jan Kralovec  
Erzsebet Kuettnier  
Elizabeth A. Kurman  
Richard Kurovski  
Barbara Lanctot  
Phyllis and Jacob Lasser  
Thomas and Annelle Lawson  
Cathy Lazaroff  
Christine Lehmann  
Leonora Georgeglou  
Mr. and Mrs. John G. Levi  
Allison and Brad Levin  
Rosekind Lindau  
Nancy Malitz and  
Lawrence B. Johnson  
Jeffrey Maniaci  
Katharine Mann  
Morris Mauer  
Whitney McAllister  
McCanns of Montclair  
Bill and Donna McGough  
Margaret McGuire  
William Melamed  
Priscilla Mims  
Mechelle Moe  
Ann Moroney  
John Morse  
Dr. and Mrs. Martin Mozes  
Andre Noel II  
Susan Noel  
Diane Nowicki  
Linda Nuneman  
Paul Nyman  
Mark Oberler  
Susan O'Brien  
Lyssa Olker  
Mat Olson  
Tracey Olson

Myrna Orenstein and  
John Summerhays  
Jason Ott  
Joseph and Jo Ann Paszczyk  
Myrna Pedersen  
Dave and Carole Perlman  
W. A. Phillips  
Pam Popielarz  
Sandra Popik  
Michelle Prestidge  
Tom and Donna Ray  
Anne-Marie Rhodes  
Lindsay Richards  
Jesse Rivera  
Sue Ann Robinson  
Leah Robinson  
Maren Robinson and  
Rom Barkhordar  
Carmen Roman  
Patricia Ronan  
Marsha and Robert Rosner  
Fran Ruffalo and  
Harmon Greenblatt  
Anne Ryan  
Judith Sagan  
Edward Salopek, M.D.  
Carole Schecter and  
Steven Mayer  
Karen and Frank Schneider  
Bobbie and Vernon Schultz  
Rosie Schultz  
Elizabeth and Tom Schwartz  
Esther Schwartz  
Jean Schwartz  
Lisa Scully  
Jen Seaver  
Lynda and Paul Shadrake  
Sandra Shane-DuBow  
Asia Siddique  
Chelsea Smith  
Merrill Smith  
Neil and Elaine Smith  
Wayne Smith  
Margaret Snow  
Ronnie Jo Sokol  
William Solomon  
Marshall Sparberg  
Joseph Stewart  
Susan Stodolsky  
Mrs. David and Pratima  
Stuhldreher  
Lauri Sugerman  
and Graydon Booth  
Shaheen Tahir  
William Tedford  
Kathy Tholin and Steven Starr  
Ronald Thomas  
Donna Tickman  
Merle and Thomas Tresser  
Denise and Rhea Turcotte  
Brian Turner  
Cornelius III and  
Jeanne Van Dyke  
James Venskun  
Terri Washington  
Patricia Watkins  
Elfriede Wedam  
Joan Weiss  
Magnes Welsh  
Dennis Wentz, M.D. and  
Anne Colston Wentz, M.D.  
Rick Wenzel  
Neva West  
Nancy Whitehead  
Matilda Willhoite  
Kathy Willhoite  
and Rodd Zolkos  
Ann Wise  
Judy Wise  
Valerie J. Woods  
Virgil Woods  
Marty Wright  
and Therese Smith  
Dean A. Yannis  
Richard Yeboah  
Wendy Zinn  
Jill Zucker

---

# IN-KIND DONORS

We are pleased to recognize these organizations and individuals who have supported TimeLine through the donation of goods and services in the amount of \$1,000 and above from December 1, 2024 – December 8, 2025.

## **\$1,000 and above**

Broadway In Chicago  
Bulley & Andrews  
The Chicago Hotel Collection  
Nic Diamond  
JoAnne Dobrick  
Andrew Hamm, Greenberg Traurig

Katten Muchin Rosenman LLP  
Michael and Kate Kennedy  
Eileen LaCario and Tony D'Angelo  
Thad and Lisa Malik  
Bill and Penny Obenshain  
PJ and Shelley Powers

The Ritz-Carlton, Chicago  
Phil Rozansky and Theresa Foley  
Mitchell Sabshon and Joan Colmar  
Schuler Shook Theatre Planners/  
Lighting Designers  
John Yonover  
M. Elizabeth Zeigler

---

# STEP INTO TIME GALA

We are honored to recognize the leadership sponsors who contributed to TimeLine's annual Step Into Time benefit, which took place on April 26, 2025. TimeLine is also grateful to those who purchased tickets, auction prizes, and raffle tickets to support Step Into Time. We regret that due to space limitations, we are unable to list everyone who contributed. Please accept our heartfelt thanks and know that your participation made a difference!

## **\$25,000 Lead Sponsors**

Joseph & Bessie

Feinberg Foundation

Bill and Penny Obenshain

## **\$15,000 Platinum Sponsors**

Christine Albright and Larry Gill

## **\$10,000 Gold Sponsors**

Kate Hurckes Arias and Gil Arias  
JoAnne Dobrick  
Maridee Quanbeck  
Van Dam Charitable Foundation  
Diane and Richard G. Weinberg

## **\$7,000 Silver Sponsors**



Michael and Kate Kennedy  
Mitchell Sabshon and Joan Colmar

## **\$5,000 Bronze Sponsors**



Deborah Cohen and Thomas Silfen  
Brian and Marcella Douce  
Thad and Lisa Malik  
Shanda McFadden and  
Kenneth McFadden Jr.

John and Eileen Sterling

Ayisha Tahir  
Constance and Hugh Williams

## **Cocktail Sponsor**

Kate Hurckes Arias  
and Gil Arias

## **Décor Sponsor**

Erica C. Meyer

---

# STEP INTO HOLIDAY TIME

We are honored to recognize the leadership sponsors who contributed to TimeLine's Step Into Holiday Time fundraiser, which took place on December 5, 2025. TimeLine is also grateful to those who purchased tickets, auction prizes, and raffle tickets to support Step Into Holiday Time. We regret that due to space limitations, we are unable to list everyone who contributed. Please accept our heartfelt thanks and know that your participation made a difference!

## **\$25,000 Champagne Sponsors**

Bill and Penny Obenshain

## **\$15,000 Sweets Sponsor**

Van Dam Charitable Foundation

## **\$10,000 Scones Sponsors**

Broadway In Chicago  
John Sirek and Colleen Loughlin

## **\$7,500 Savory Sponsors**

Lawrence Gill and Christine Albright  
Michael and Kathryn Kennedy  
Maridee Quanbeck

## **\$5,000 Tea Cup Sponsors**

Jennifer Ames and Paul Lazarre  
InterPark  
Eileen LaCario and Tony D'Angelo  
Amy Matheny and Kiki Haralambides  
Mitchell Sabshon and Joan Colmar  
Debbie Siegel and Robert Altman

## **Décor Sponsor**

Erica C. Meyer, in honor of  
Bill and Penny Obenshain

## **Entertainment Sponsors**

Kate Hurckes Arias  
and Gil Arias  
Brian and Marcella Douce

---

**We strive to keep our donor lists accurate and up-to-date at all times.  
Please contact Eva Nyman at 773.281.8463 x128 with any questions or concerns.**

## YOUR ROLE

TimeLine Theatre—like our peers in Chicago's vibrant community of not-for-profit theatres—depends upon the support of patrons like you to thrive. To learn more about all the ways you can support our mission and programs, visit [timelinetheatre.com/donate](https://timelinetheatre.com/donate).