



---

**EXPLORING TODAY THROUGH THE LENS OF THE PAST**

---

artistic director PJ Powers | executive director Mica Cole

# Trouble in Mind

by **Alice Childress**  
directed by **Ron OJ Parson, SDC+**

scenic designer **Caitlin McLeod**  
costume designer **Christine Pascual, U.S.A.**  
lighting designer **Brandon Wardell, U.S.A.**  
properties designer **Jennifer Wernau**  
original music and sound designer **Christopher Kriz, U.S.A.**  
wig and hair designer **Megan E. Pirtle**  
dramaturg **Martine Kei Green-Rogers**  
stage manager **Miranda Anderson\***

featuring **Tim Decker\***, **Vincent Jordan\***, **Shariba Rivers\***,  
**Charles Stransky\***, **Guy Van Swearingen\***, **Tarina J. Bradshaw**,  
**Jordan Ashley Grier**, **Kenneth D. Johnson**, and **Adam Shalzi**

---

**November 10 – December 18, 2022** (previews 11/2 – 11/9)

---



The Director is a member of the  
**STAGE DIRECTORS AND CHOREOGRAPHERS  
SOCIETY**, a national theatrical labor union.



\* Member of Actors'  
Equity Association, the  
union of professional actors  
and stage managers

Those designers and scenic  
artists identified by U.S.A. are  
members of United Scenic Artists,  
IATSE Local 829, AFL-CIO

+ TimeLine Company Member

---

# CAST

---

<b>Tim Decker*</b> .....	Al Manners
<b>Vincent Jordan*</b> .....	John Nevins
<b>Shariba Rivers*</b> .....	Wiletta Mayer
<b>Charles Stransky*</b> .....	Henry
<b>Guy Van Swearingen*</b> .....	Bill O'Wray
<b>Tarina J. Bradshaw</b> .....	Millie Davis
<b>Jordan Ashley Grier</b> .....	Judy Sears
<b>Kenneth D. Johnson</b> .....	Sheldon Forrester
<b>Adam Shalzi</b> .....	Eddie Fenton

UNDERSTUDIES: Chloe Belongilot (*Judy Sears*), Zach Bloomfield (*Henry*), Matthew Collins (*Bill O'Wray*), Breanna Ghostone (*Millie Davis*), Mike Jimerson (*Al Manners*), Andre McGraw (*Sheldon Forrester*), Brandon J. Sapp (*John Nevins*), Elliot Simmons (*Eddie Fenton*), and Tina Marie Wright (*Wiletta Mayer*). Understudies will never substitute for a listed player unless an announcement is posted at the performance.

\* Member of Actors' Equity Association, the union of professional actors and stage managers.

---

# SETTING

---

A Broadway theatre in New York City, 1957.

---

# PRODUCTION STAFF

---

Associate Director and Assistant Dramaturg .....	<b>DeRon S. Williams</b>
Associate Costume Designer .....	<b>Johan H. Gallardo</b>
Associate Lighting Designer .....	<b>Trey Brazeal</b>
Dramaturgical Display Designer .....	<b>Dina Spoerl</b>
Production Assistant / COVID Compliance Officer .....	<b>Gianni Carcagno</b>
Assistant Scenic Designer .....	<b>Aria Morris</b>
Production Manager Sub .....	<b>Ellen Willett</b>
Scenic Supervisor .....	<b>Emmanuel Jimenez</b>
Scenic Charge Artist .....	<b>Jessica Kuehnau Wardell</b>
Costume Supervisor .....	<b>Lucy Elkin</b>
Lighting Supervisor .....	<b>Mark Brown</b>
Audio Supervisor .....	<b>Averi Paulsen</b>
Wardrobe Run Crew .....	<b>Mia Thomas</b>
Vocal Consultant .....	<b>Robin DaSilva</b>
Marketing Consultant .....	<b>Camille Jackson</b>

---

# PLEASE NOTE

The videotaping or making of electronic or other audio and/or visual recordings (including photographs) of this production or distributing recordings on any medium, including the internet, is strictly prohibited, a violation of the author's rights and actionable under United States copyright law.

---

# CONVERSATION

---

TimeLine Theatre is dedicated to exploring today's social and political issues through the lens of the past. We share information and provide inspiration for conversation through this *Backstory* program book, the interactive lobby experience (with elements available in person at the theatre as well as online), discussion events (in-person and sometimes virtual), our blog Behind the 'Line, and more. Explore all the resources available at [timelinetheatre.com/trouble-in-mind](http://timelinetheatre.com/trouble-in-mind).

## VISIT THE ONLINE LOBBY FOR *TROUBLE IN MIND*



To supplement the lobby experience available at our theatre on Wellington Avenue, we've created additional resources for you to explore online! Scan the QR Code at left or visit [timelinetheatre.com/trouble-in-mind-lobby](http://timelinetheatre.com/trouble-in-mind-lobby) to find additional content, including:

- Online versions of some of the materials displayed in the lobby, for further perusal
- Further reading and activities related to the play's topics and themes
- Plus photos, videos, and much more!

## FIND US ON SOCIAL MEDIA

TimeLine Theatre is on Facebook, Twitter, Instagram, and YouTube at @TimeLineTheatre. Don't forget to tag us and use the hashtag #TroubleInMind and/or #TimeLineTheatre.



# BIOGRAPHIES



**TIM DECKER** (*Al Manners*) is happy to be back at TimeLine, where he previously appeared in *SPILL* in 2015. Tim has appeared in dozens of productions both in Chicago and at regional theatres. Favorite local productions include a four-year run of *MILLION*

*DOLLAR QUARTET* at The Apollo, *HAMLET* and *MARY STUART* at Chicago Shakespeare, and *TOYS IN THE ATTIC* at American Blues Theatre (Equity Jeff Award – Actor in a Principal Role, Play). In addition to theatre work, Tim has had recurring and guest star roles in such television shows as *BOSS*, *CHICAGO JUSTICE*, *CUPID*, *THE UNTOUCHABLES*, and *CHICAGO FIRE*, as well as many commercials for both radio and television.



**VINCENT JORDAN** (*John Nevins*) is very excited to be making his TimeLine debut with this production. He hails from Chicago, where his spark for acting started off at a young age. After honing his acting skills in the Asante Childrens Theater in Indianapolis, Ind., he would later come back to Chicago to work with the Black Ensemble Theater. It was there that a star was born, as he would make appearances in numerous shows, including the lead role of Chuck Berry in *HAIL HAIL CHUCK BERRY*. Vincent is also a Jeff Award winner for his portrayal of Earth Wind & Fire's Maurice White in *YOU CAN'T FAKE THE FUNK*.



**SHARIBA RIVERS** (*Willetta Mayer*) is making her TimeLine debut. Chicago stage credits include *SCHOOL GIRLS; OR, THE AFRICAN MEAN GIRLS PLAY* (U/S, Goodman); *THE TASTERS* (Rivendell); *HOODOO LOVE* (Raven); *IN THE CANYON* (Jackalope); *DONTRELL WHO KISSED THE SEA* (First Floor); *INSURRECTION: HOLDING HISTORY* (Stage Left); and *NEVER THE MILK AND HONEY* (MPAACT). Regional credits include *SWEAT* (Paramount Theatre, Aurora, Ill.); *SCHOOL GIRLS; OR, THE AFRICAN MEAN GIRLS PLAY*

(TheatreSquared, Fayetteville, Ark.); *WE ARE CONTINUOUS* (Geva Theatre, Rochester, N.Y.); and *SMALL JOKES ABOUT MONSTERS* (16th Street Theater). Television an film credits include *SMOKING GUN*, *CHICAGO MED*, *CHICAGO FIRE*, and *CHICAGO P.D.* (NBC); *THE CHI* (Showtime), and *EMPIRE* (Fox). She is represented by Gray Talent Group. Visit [sharibatheactor.com](http://sharibatheactor.com).



**CHARLES STRANSKY** (*Henry*) is extremely pleased to be back with TimeLine, where he was last seen playing Mordechai Weiss in *A SHAYNA MAIDEL*. He has performed on Broadway and off-Broadway extensively. His Chicago and regional theatre credits

include productions at Goodman, Steppenwolf, Court, The Old Globe, Northlight, American Players Theatre, Wisdom Bridge Theatre, Cardinal Stage Company, Capital Rep, Riverside Theatre Company, Kitchen Theatre, Delaware Theatre, The State Theatre of Austin, and Vermont Stage Company. Television credits include *CHICAGO P.D.*, *PATRIOT*, *EMBEDS*, *ALL MY CHILDREN*, *LAW & ORDER*, *LAW & ORDER: CRIMINAL INTENT*, *THIRD WATCH*, and many others. Charles has performed in many films, including *THE SPANISH PRISONER*, *HOMICIDE*, and *THINGS CHANGE*, all written and directed by David Mamet. Audible.com has a complete list of varied fiction and non-fiction audiobooks he has narrated. Charles has been a proud member of Actors' Equity since 1976. He is represented by the wonderful Paonessa Talent Agency.



**GUY VAN SWEARINGEN** (*Bill O'Wray*) is making his TimeLine Theatre debut. Off-Broadway credits include *THE OPPONENT* (59E59). Select regional credits include *ARSENIC AND OLD LACE* (Court), *SWEAT* (Huntington), *THE SIGN IN SIDNEY BRUS-*

*TEIN'S WINDOW* (Goodman), *SIMPATICO* (McCarter), *THE TIME OF YOUR LIFE* (Steppenwolf, Seattle Rep, A.C.T.), *TAKING CARE* (Steppenwolf), *CLEANSED* (Defiant), *ELEVEN ROOMS OF PROUST* (Lookingglass, About Face, Goodman), and *MANN IST MANN* (Famous Door). He is the founder of A Red Orchid, where he has more than 15 performance stage credits. Television credits include

# BIOGRAPHIES

POWER BOOK IV: FORCE (Starz), CHICAGO FIRE (NBC), FARGO (F/X), THE RED LINE (CBS), BOSS (Starz), and THE BEAST (A&E). Film credits include CAPTIVE STATE, TAKE SHELTER, THE DILEMMA, THE MERRY GENTLEMAN, THE WEATHERMAN, and ALI. He is a former Lieutenant on Truck 36 of the Chicago Fire Department. He is represented by Paonessa Talent and WEG Talent, NYC.



## **TARINA J. BRADSHAW**

(*Millie Davis*) is thrilled to return to TimeLine, where she previously understudied TOO HEAVY FOR YOUR POCKET. Tarina earned her BA degree in acting in New York and is a 2022 Stella Adler Summer Conservatory alum. She was

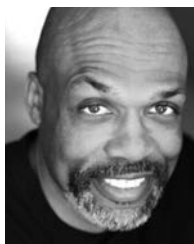
previously seen in Raven Theatre's production of THE LAST PAIR OF EARLIES (Equity Jeff Award nomination – Production, Play, Midsize), deemed the #1 Chicago show of 2021 by *Newcity Stage* and *Let's Play*. Tarina has also worked with Court, Windy City Playhouse, Oak Park Festival Theatre, and Black Ensemble, among others. She is dedicating her first performance to her wonderful fiancé. She is represented by DDO Artist Agency. For more, visit [Linktr.ee/TarinaBradshaw](https://linktr.ee/TarinaBradshaw).



## **JORDAN ASHLEY GRIER**

(*Judy Sears*) is thrilled to return to TimeLine, where she previously understudied RELENTLESS. Favorite theatre credits include ARSENIC AND OLD LACE (Court), THE-ATRE MACABRE (Tension, Los Angeles), MACBETH (LAMDA,

London), and JULIUS CAESAR (SDSU, San Diego). Film and television credits include THE GREAT AND TERRIBLE DAY OF THE LORD, BETRAYED, GRIT, and IMPOSTER. She graduated from the London Academy of Music & Dramatic Art (LAMDA) with an MA degree in Classical Acting. Jordan would like to thank her partner Alex, her family, and her team at Stewart Talent.



## **KENNETH D. JOHNSON**

(*Sheldon Forrester*) is happy to return to TimeLine, where he previously understudied SUNSET BABY and MY KIND OF TOWN. Kenneth is a Chicago native and has acted in many theatres around town. He was last seen at

Definition Theatre in AMERICA v.2.1 THE SAD DEMISE AND THE EVENTUAL EXTINCTION OF THE AMERICAN NEGRO. Other credits include BETWEEN RIVERSIDE AND CRAZY (Redtwist, Non-Equity Jeff Award nomination – Performer in a Principal Role, Play). Television credits include THE CHI (Showtime) and THE RED LINE (CBS). He received a BA degree in Theatre at Columbia College Chicago.



## **ADAM SHALZI** (*Eddie Fenton*)

is happy to be making his TimeLine debut with this incredible artistic team. Theatre credits include LORD OF THE FLIES (Steppenwolf), THE ORIGINAL GREASE (American Theater Company), BALM IN GILEAD and THE STINKY

CHEESE MAN (Griffin), THE DIVINERS and MACBETH (Organic), 10 OUT OF 12 (Theater Wit), and productions with Strawdog, Sideshow, Redtwist, Redmoon, Next, Emerald City, WildClaw, and the Illinois Shakespeare Festival. Television and film credits include PAPER GIRLS, CHICAGO FIRE, THE CHI, UTOPIA, BETRAYAL, JANIE JONES, NIGHTLIGHTS, THE WINDIGO, and THE CRUSADES. Adam holds a BFA degree in acting from the University of Illinois at Urbana-Champaign and is a graduate of the iO improv program. He is represented by LEWK Management and Paonessa Talent. On Instagram and YouTube: [@shalzinator](https://www.instagram.com/shalzinator).

# BIOGRAPHIES



**CHLOE BELONGIOT** (*Judy Sears U/S*) is a Chicago-based actress and teaching artist represented by Big Mouth Talent, and she is excited to be making her TimeLine debut! Chloe has her BFA degree in Musical Theatre from Coastal Carolina University.

Since recently moving to Chicago, she has performed in Porchlight Theatre's *NEW FACES SING BROADWAY CABARET*, the world premiere of *RED SUMMER* with MPAACT, and is an active performer with the ABLE Ensemble of Chicago. Chloe is thankful to have the opportunity to help bring this important story to life.



**ZACH BLOOMFIELD** (*Henry U/S*) is making his TimeLine debut. His film and television credits include *RUNNER* and *ZEN ROOM* (pilot). Chicago theatre credits include work with Shattered Globe, BoHo, City Lit, Promethean Theatre Ensemble, The Factory Theatre, Oil Lamp Theatre, Clockwise Theatre, and many productions at Eclipse Theatre Company, where he was an ensemble member. He has a BFA degree in Acting/Directing from Kent State University, an MA degree in Theatre Arts from North Dakota State University, and a PhD in Theatre History from The University of Missouri-Columbia. He is a professor emeritus at Joliet Junior College. He is represented by Big Mouth Talent.

ater, Oil Lamp Theatre, Clockwise Theatre, and many productions at Eclipse Theatre Company, where he was an ensemble member. He has a BFA degree in Acting/Directing from Kent State University, an MA degree in Theatre Arts from North Dakota State University, and a PhD in Theatre History from The University of Missouri-Columbia. He is a professor emeritus at Joliet Junior College. He is represented by Big Mouth Talent.



**MATTHEW COLLINS** (*Bill O'Wray U/S*) is thrilled to return to TimeLine, where he previously understudied *DANNY CASOLARO DIED FOR YOU* and *SPILL*. A transplant from Kentucky, he earned his BFA degree in Theatre Studies from Murray State University and moved to Chicago, making it his home for the last 10 years. Recent theatre credits include *SOUTHERN GOTHIC*, *NAUTILINA*, and *THE LIBRARY*. Television credits include *CHICAGO MED* and *CHICAGO FIRE*. He's represented by Big Mouth Talent.

State University and moved to Chicago, making it his home for the last 10 years. Recent theatre credits include *SOUTHERN GOTHIC*, *NAUTILINA*, and *THE LIBRARY*. Television credits include *CHICAGO MED* and *CHICAGO FIRE*. He's represented by Big Mouth Talent.



**BREANNA GHOSTONE** (*Millie Davis U/S*) is beyond grateful to be a part of her first show at TimeLine! Currently represented by Gray Talent Group, Breanna is a singer, actor and dancer who graduated with her Master's degree in Opera and Musical Theatre

Performance from Arizona State University. She also holds a Bachelor's degree in Opera Performance from the University of Michigan. Favorite musical credits include *HAIRSPRAY* (Power Center for Performing Arts), *LEGALLY BLONDE THE MUSICAL* (Evelyn Smith Theatre), *WEST SIDE STORY* (The Phoenix Theatre Company) and *NEW FACES SING BROADWAY 1947* (Porchlight). More recently, Breanna has also appeared on camera in educational industrials with companies like Verizon Wireless and McGraw Hill, supported Black film projects such as *THE DETROIT PROJECT* and *THE FUNNEL*, and appeared in commercials for Gatorade and AutoZone.



**MIKE JIMERSON** (*AlManners U/S*) is delighted to return to TimeLine, where he understudied *OSLO*. A long-time Chicago improviser, his other stage credits include *IMPROVISED SHAKESPEARE* (formerly at iO Chicago) and *THEE TRINITY* (Polemic Theater).

His television credits include *CHICAGO MED* and *CHICAGO FIRE* (NBC), *FARGO* (FX), and *NEXT* (FOX), and he can be seen in the upcoming feature film *TWAIN: CANCELLED* (Kernel Productions). Mike is represented by Gray Talent Group.



**ANDRE MCGRAW** (*Sheldon Forrester U/S*) is making his TimeLine debut. A native of Omaha, Nebraska, he got his start at the John Beasley Theater and Workshop (JBT) in Omaha, where his credits included *FENCES*, *MASTER HAROLD...AND THE BOYS*,

*JITNEY*, *TWO TRAINS RUNNING*, *RADIO GOLF*, *SOUL SURVIVOR*, *GEM OF THE OCEAN*, and *MA RAINEY'S BLACK BOTTOM*, among others. Other Omaha theatre credits include *DEATH OF A SALESMAN*, *A RAISIN IN THE SUN*,

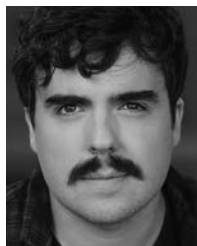
# BIOGRAPHIES

BOYS NEXT DOOR (2008 Omaha Entertainment Award – Best Supporting Actor), THE PIANO LESSON, RACE (2014 Award – Best Supporting Actor), THE EXONERATED, PRAYING FOR A HURRICANE, A MAN OF FISH, and TO KILL A MOCKINGBIRD, among others. Since moving to Chicago, his credits include THE OLYMPIANS (Northwestern University/Piven), TITUS ANDRONICUS (Haven), and TWO TRAINS RUNNING (Court). He studied theatre in the BFA program at the University of Nebraska-Omaha and the 2008 August Wilson Festival & Workshop at the Kennedy Center in Washington, D.C.



**BRANDON J. SAPP** (*John Nevins U/S*) is making his TimeLine debut. Born and raised in Chicago, he received his BFA degree in Acting from Northern Illinois University and intensively studied under Sanford Meisner's acting method. Post-graduation theatre credits include A MIDSUMMER NIGHT'S DREAM (Ohio Shakespeare Festival) and ROMEO AND JULIET, TUBMAN: ROAD TO FREEDOM, and A CHRISTMAS CAROL at Chicago's Great Works Theatre. He is represented by Gray Talent Group.

atre credits include A MIDSUMMER NIGHT'S DREAM (Ohio Shakespeare Festival) and ROMEO AND JULIET, TUBMAN: ROAD TO FREEDOM, and A CHRISTMAS CAROL at Chicago's Great Works Theatre. He is represented by Gray Talent Group.



**ELLIOT SIMMONS** (*Eddie Fenton U/S*) is very excited to be making his TimeLine debut. He graduated in 2017 with a BA degree in Acting from the University of Illinois at Chicago. He was recently seen in LITTLE SHOP OF HORRORS (Orin U/S) at Citadel Theatre and was the season one host for SPACE GREED on Curiosity Stream. He is represented by Big Mouth Talent.

del Theatre and was the season one host for SPACE GREED on Curiosity Stream. He is represented by Big Mouth Talent.



**TINA MARIE WRIGHT** (*Willetta Mayer U/S*) is making her TimeLine debut. A Chicagoan, she has performed with numerous Chicago-area theaters throughout the years. Selected credits include ARSENIC AND OLD LACE (Court, u/s); HUNGRY GHOST FESTI-

VAL (Lifeline, reading); ONE FOR THE ROAD, FIRST WORDS, RADICAL HEARSAY, and TROUBLE THE WATER (MPAACT);

SHAKIN' THE MESS OUT OF MISERY (Pegasus); FIELD OF SOULS, THE DREAMERS, A LOVESONG FOR MISS LYDIA, ONE MONKEY DON'T STOP NO SHOW (ETA Creative Arts); THE NAT KING COLE STORY and A STREETCAR NAMED DESIRE (Black Ensemble); and SHAKIN' THE MESS OUT OF MISERY (Chicago Theater Company).

**ALICE CHILDRESS** (*Playwright*, 1916–1994) was raised during the Harlem Renaissance under the watchful eye of her beloved maternal grandmother and grew up to become first an actress and then a playwright and novelist. She was a founding member of the American Negro Theatre. Her play TROUBLE IN MIND debuted in 1955 at the Greenwich Mews Theatre, received a well-reviewed off-Broadway revival in 1998 by the Negro Ensemble Company and has since been produced by a multitude of prestigious theaters such as Yale Repertory Theatre, Centerstage, Milwaukee Repertory Theatre, Arena Stage, and Roundabout Theatre's Tony Award-nominated revival in 2021. Her other plays are FLORENCE (1949), GOLD THROUGH THE TREES (1952), JUST A LITTLE SIMPLE (1950), WEDDING BAND: A LOVE/HATE STORY IN BLACK AND WHITE (1966), and GULLAH (1984). She's also known for *A Hero Ain't Nothin' But a Sandwich*, her 1973 novel about a 13-year-old Black boy addicted to heroin, which was made into a movie in 1978. Throughout her career, Childress examined the true meaning of being Black, and especially of being Black and female. As she herself once said, "I concentrate on portraying have-nots in a have society."

**RON OJ PARSON** (*Director*) is a TimeLine Company Member. His TimeLine credits include RELENTLESS (Equity Jeff Award – Direction of a Play, Large), TOO HEAVY FOR YOUR POCKET, TO CATCH A FISH, PARADISE BLUE, SUNSET BABY, and A RAISIN IN THE SUN. He is a native of Buffalo, New York, and a graduate of the University of Michigan's professional theater program. He is the co-founder and former Artistic Director of Onyx Theatre Ensemble of Chicago. Ron is a Resident Artist at Court Theatre. Since moving to Chicago from New York in 1994, he has worked as both an actor and director. His Chicago credits include work with The Chicago Theatre Company, Victory Gardens, Teatro Vista, Goodman, Steppenwolf, Chicago Dramatists, Northlight, Court, Black Ensemble Theatre, Congo Square, Urban Theatre Company, City Lit Theater, ETA Creative Arts, and Writers, among others. Regionally, Ron has directed shows at Studio Arena Theatre, Alliance Theatre, Actors Theatre

of Louisville, Milwaukee Repertory, South Coast Repertory, Pasadena Playhouse, Geva Theatre, Virginia Stage, Roundabout Theatre, Ensemble Theatre of Cincinnati, Wilshire Theatre, The Mechanic Theatre, CenterStage, St. Louis Black Repertory, Pittsburgh Public Theater, Pittsburgh Playwrights Theatre, Signature Theatre (New York), Kansas City Rep, and Portland Stage, among others. In Canada, he directed the world premiere of PALMER PARK by Joanna McClelland Glass at the Stratford Festival. He is a member of AEA, SAG-AFTRA, and SDC. For further information, visit [ronojparson.com](http://ronojparson.com). Ron would like to dedicate this production to Bert Williams, Hattie McDaniel, and the many Black actors who paved the way.

**CAITLIN MCLEOD** (*Scenic Designer*) is a costume, scenic, and puppet designer; TROUBLE IN MIND is her TimeLine debut. Most recent credits include EXQUISITE CORPSE (Rough House), GET OUT ALIVE (Haven), CELESTIAL BALLAD (Chicago Puppet Lab), SEAGULL (Steppenwolf), NOW AND THEN (Oil Lamp), SEA CHANGE (Cabinet of Curiosity), WHEN HARRY MET REHAB (Pemberley Productions), HERSHEL AND THE HANUKKAH GOBLINS (Strawdog), DIAMOND'S DREAM (Chicago Children's Theatre), STICK FLY (Writers), and MLIMA'S TALE (Griffin). She also is a co-founder of the Chicago based costume crafts company Craftiga ([Craftiga.com](http://Craftiga.com)), a co-curator of NBS Chicago's Puppet Slam, and a company member of Rough House. She earned her MFA degree from Northwestern University. Visit [CaitlinMcLeodDesign.com](http://CaitlinMcLeodDesign.com)

**CHRISTINE PASCUAL** (*Costume Designer*) returns to TimeLine with TROUBLE IN MIND, having previously designed RELENTLESS (Equity Jeff Award nomination – Costume Design, Large), OSLO, TO CATCH A FISH, PARADISE BLUE, BAKERSFIELD MIST, SUNSET BABY, and HANNAH AND MARTIN. Previous design credits include I, CINNA (Chicago Shakespeare), HOW TO DEFEND YOURSELF and THE FIRST DEEP BREATH (Victory Gardens), DANCE NATION and LA RUTA (Steppenwolf), THE TOTAL BENT and THE DISPLACED (Haven), LADY IN DENMARK and FEATHERS AND TEETH (Goodman), DUTCH MASTERS and THE LIGHT FANTASTIC (Jackalope), CRUMBS FROM THE TABLE OF JOY (Raven), EAST TEXAS HOT LINKS (Writers), and PUT YOUR HOUSE IN ORDER (The Roustabouts). Christine holds an MFA degree from University of Illinois Urbana-Champaign. She is a member of United Scenic Artist Local 829.

**BRANDON WARDELL** (*Lighting Designer*) is a Chicago-based lighting and scenic designer returning to TimeLine with TROUBLE IN MIND, having previously designed RUTHERFORD AND SON, CARDBOARD PIANO, and IN THE NEXT ROOM, OR THE VIBRATOR PLAY. He is an Artistic Associate of Steep Theatre and Associate Professor at Northern Illinois University.

**JENNIFER WERNAU** (*Properties Designer*) is a freelance properties designer in Chicago, originally from New York. She's returning to TimeLine, where she previously worked on RELENTLESS and CARDBOARD PIANO. She has worked for companies like Metropolis Performing Arts Center and Peninsula Players. Past credits include LITTLE SHOP OF HORRORS, BASKERVILLE, ANYTHING GOES, and A CHRISTMAS CAROL (Metropolis Theatre); SUNSET BOULEVARD and GYPSY (Porchlight); DARKNESS AFTER DAWN (Factory Theatre); HOODED, OR BEING BLACK FOR DUMMIES (First Floor); THE ARC TRIALS (Mudlark Theater Company); and SMALL WORLD (The New Colony).

**CHRISTOPHER KRIZ** (*Original Music and Sound Designer*) is a composer and sound designer based in Chicago and is pleased to return to TimeLine, having previously designed RELENTLESS (Equity Jeff Award nomination – Original Music in a Play), TOO HEAVY FOR YOUR POCKET, PARADISE BLUE, SUNSET BABY, and others. Other Chicago credits include work with Goodman, Steppenwolf, Chicago Shakespeare, Chicago Symphony Orchestra, Court, Remy Bumppo, Victory Gardens, Northlight, Shattered Globe, The Gift Theatre, and many others. Regional credits include productions with Seattle Repertory, Kansas City Repertory, Indiana Repertory, Alabama Shakespeare Festival, Crossroads Theatre, TheatreSquared, Montana Shakespeare Festival, Nebraska Repertory, Michigan Shakespeare Festival, and others. A winner of five Joseph Jefferson Awards, Christopher is a proud member of United Scenic Artists 829. To hear more of his work, please visit [christopherkriz.com](http://christopherkriz.com).

**MEGAN E. PIRTLE** (*Wig and Hair Designer*) is excited to return to TimeLine, having previously designed the wigs for CAMPAIGNS, INC. (with Katie Cordts), RELENTLESS, and RUTHERFORD AND SON. Selected wig and hair design credits include L'INCORONAZIONE di POPPEA, L'AMANT ANONYME (Haymarket Opera); TWO TRAINS RUNNING (Court); HER HONOR JANE BYRNE (Looking-glass); DEAR JACK, DEAR LOUISE and SONGS FOR NOBODIES (Northlight); THE LAST PAIR OF EARLIES



and CRUMBS FROM THE TABLE OF JOY (Raven); and HELLO DOLLY, THE WIZARD OF OZ, and THE PRINCESS AND THE PEA (Marriott). She received BFA degrees in both Costume Design and Costume Technology from DePaul University and is a licensed cosmetologist of Illinois, having graduated from Tricoci University of Beauty Culture. For more, visit [meganpirtledesign.com](http://meganpirtledesign.com).

**MARTINE KEI GREEN-ROGERS** (*Dramaturg*) is making her TimeLine debut. Dramaturgical credits include THE CATASTROPHIST (Marin Theatre Company, Calif.); HE BROUGHT HER HEART BACK IN A BOX and THE OHIO STATE MURDERS (Round House Theatre, Bethesda, Md.); KING HEDLEY II, RADIO GOLF, FIVE GUYS NAMED MOE, BLUES FOR AN ALABAMA SKY, GEM OF THE OCEAN, SEVEN GUITARS, THE MOUNTAINTOP, and HOME (Court); and HAIRSPRAY, THE BOOK OF WILL, SHAKE-SPEARE IN LOVE, COMEDY OF ERRORS, THE AFRICAN COMPANY PRESENTS RICHARD III, and FENCES (Oregon Shakespeare Festival). She also serves as Dean of The Theatre School at DePaul University.

**MIRANDA ANDERSON** (*Stage Manager*) is delighted to be back with TimeLine, where recent credits include CAMPAIGNS, INC.; RELENTLESS; and KILL MOVE PARADISE. Other Chicago PSM credits include productions with Writers, Rivendell, First Folio, and The Hypocrites, as well as work with Steppenwolf and Lookingglass. From 2012-2018 she toured with The Hypocrites' Gilbert and Sullivan productions to regional theaters, including Olney Theatre Company, Pasadena Playhouse, Skirball Center at New York University, Berkeley Repertory, Actors Theatre of Louisville, and American Repertory Theatre in Boston. Miranda is a proud member of Actors' Equity Association.

**DERON S. WILLIAMS** (*Associate Director, Assistant Dramaturg*) is excited to work with TimeLine for the first time. As a freelance director and dramaturg, he has worked in several cities. Other recent credits include THE LIL' FLO AND BIG MO SHOW! (Hartford Stage), THE EXONERATED (Spectrum Theatre Ensemble), AFRICA TO AMERICA (Eastern Connecticut State University), and CLYBOURNE PARK (Texas Tech University). He is an Assistant Professor of Theatre at Loyola University Chicago. He received a BA degree in Theatre from Albany State University, an MA degree in Arts Administration from Eastern Michigan University, and Ph.D. in Theatre from Texas Tech University.

**JOHAN H. GALLARDO** (*Associate Costume Designer*) is excited to join their first production at TimeLine. They work as a costume designer and illustrator in the Chicago area, along with being the Costume Supervisor at Chicago Children's Theatre. Chicago design credits include LAST HERMANOS at A Red Orchid and TOMMY ON TOP at PrideArts. Assistant design credits include KING JAMES, SEAGULL, I'M NOT YOUR PERFECT MEXICAN DAUGHTER, and THE BROTHERS SIZE at Steppenwolf Theatre and A RAISIN IN THE SUN at American Players Theatre. Visit [JohanHGallardo.com](http://JohanHGallardo.com).

**TREY BRAZEAL** (*Associate Lighting Designer*) is happy to be working with TimeLine for the first time on this show and wants to thank Maggie and Brandon for allowing him this collaboration! Past credits include MUCH ADO ABOUT NOTHING and FENCES (The Olney Theatre Center), THE LAST FIVE YEARS (Third Avenue Playworks), MOULIN ROUGE! THE MUSICAL (2nd Assistant, American Tour, Nederlander Theatre), LEONARDO! A WONDERFUL SHOW ABOUT A TERRIBLE MONSTER TOUR (Manual Cinema), THIS WIDE NIGHT (Shattered Globe, Interrobang), and LITTLE SHOP OF HORRORS and MY WAY: A FRANK SINATRA TRIBUTE MUSICAL (Metropolis Performing Arts Center).

**DINA SPOERL** (*Dramaturgical Display Designer*) returns to TimeLine for TROUBLE IN MIND, where her recent credits include CAMPAIGNS, INC.; THE CHINESE LADY; RELENTLESS; KILL MOVE PARADISE; TOO HEAVY FOR YOUR POCKET; CARDBOARD PIANO; A SHAYNA MAID-EL; TO CATCH A FISH; THE AUDIENCE; PARADISE BLUE; and A DISAPPEARING NUMBER, among many others. She has almost 20 years of graphic design and exhibit design experience. Past and current clients include the American Library Association, Daughters of the American Revolution, The National Museum of Natural History, The Newberry Library, FINRA, Nextbook, National Building Museum, Children's Home & Aid, and Indiana State Museum. She is currently Exhibits Team Leader at Naper Settlement. She sends love and immense gratitude to Mark, Jack, and Zoe.

**GIANNI CARCAGNO** (*Production Assistant, COVID Compliance Officer*) is excited to return to TimeLine after previously working on CAMPAIGNS, INC. and THE CHINESE LADY. Other credits include BLUES IN THE NIGHT, PUMP BOYS & DINETTES, and NUNSENSE (Porchlight); LA CAGE AUX FOLLES and MAMMA MIA (Music Theater

---

# BIOGRAPHIES

---

Works); POLAROID STORIES (Loyola University Chicago); and two storytelling workshops with Mentor Artists Playwrights Project. Gianni has a BA degree in Theatre and Sociology from Loyola University Chicago.

**PJ POWERS** (*Artistic Director*) was a co-founder of TimeLine in 1997 and became Artistic Director in 1999. Since then, he has overseen the production of more than 80 plays, including 12 world premieres and more than 38 Chicago premieres. During his tenure, TimeLine has garnered 60 Jeff Awards, including 11 for Outstanding Production, as well as awards for excellence in arts management, including the 2016 MacArthur Award for Creative and Effective Institutions. PJ also has been instrumental in establishing TimeLine's home on Wellington Avenue in 1999; expanding the company's programming to include productions in numerous other venues, including the Broadway Playhouse; creating the TimePieces play reading series and First Draft Festival of new work; launching the Living History Education Program in Chicago Public Schools under the direction of TimeLine co-founder Juliet Hart; and planning for TimeLine's new home in Uptown. As an actor, he has appeared in 18 productions at TimeLine, including THE APPLE FAMILY PLAYS: THAT HOPEY CHANGEY THING, as well as THE FRONT PAGE, THE FARNSWORTH INVENTION, FIORELLO!, and HAUPTMANN. He also has appeared at Writers, Northlight, and Shattered Globe, among others. A graduate of The Theatre School at DePaul University, PJ has served on the Board of Directors for the League of Chicago Theatres, was awarded the Meier Achievement Award for mid-career artists, and received a Goldman Sachs Senior Fellowship at the Smithsonian National Museum of American History. He directed the Chicago

premiere of J.T. Rogers' ONE GIANT LEAP: THE APOLLO 11 MOON LANDING in a one-night event at the Broadway Playhouse.

**MICA COLE** (*Executive Director*) was named TimeLine's Executive Director in April 2022. A Chicago native raised on the South Side, she has worked as an arts administrator and changemaker for nearly two decades. Most recently, she has been a national consultant providing executive coaching and strategic planning for cultural institutions working to embrace an antiracist leadership paradigm. Mica is a consultant with artEquity, a nonprofit organization that provides tools, training, and resources for individuals and organizations working at the intersection of art and activism. She co-led its BIPOC Surviving Predominantly White Institutions Series and the BIPOC Leadership Circle—both aimed at providing resources and mentorship to leaders of color. Prior to her work as an organizational consultant, Mica served eight seasons as the Repertory Producer at the Oregon Shakespeare Festival. As a senior leader at OSF, she played a key role in guiding the company's equity, diversity, and inclusion initiatives, many of which now serve as foundational organizational models for institutions around the world. Mica has produced more than 80 shows, including a dozen transfers and national co-productions of new plays with theatres such as American Repertory, Seattle Repertory, South Coast Rep, Arena Stage, Portland Center Stage, and Berkeley Repertory. She worked in Chicago as the Executive Director of Free Street Theater and as the Director of Education and Engagement at Writers Theatre. Mica served on the advisory committee for the Latinx Theatre Commons and is a founding member of the Black Theatre Commons. She is a graduate of The Theatre School at DePaul University.

---

# SPECIAL THANKS

---

**THIS PRODUCTION OWES SPECIAL THANKS** to numerous individuals and organizations for their time, talents and support, including Chabad of East Lakeview, 4529 Prop Shop, Albany Park Theatre Project (Trina McGee), Chicago Green Theatre Alliance, Conscious Costumes, Jacob DeKlyen, Elim Wig & Beauty Supply, Goodman Theatre (Eileen Clancy, Gina Patterson, & Tyler Jacobson), Soren Ersbak, Joey Herman, Nik Hunder, Sara Johnson, Sam Lancaster, Lyric Opera of Chicago (Mike Smallwood & Maria DeFabo Akin), Mick Marcotte, Sarah Matthews, Northlight Theatre (Hannah Compton, Emily Kneer, Colleen Schuldeis, & Matt Super), Northwestern University Wirtz Center for the Performing Arts (Peter M. Anderson & Michael Trudeau), Rachel Silver, Trent Stork, and The Theatre School at DePaul University (Amy Peter & Randy Handley).

Carpenters .....	<b>Robert Barnett, Kayne Bowling, Raphael Daniels-Devost, Jaysen Giroux, Mara Zinky</b>
Painters .....	<b>Shannon Evans, José Alexander</b>
Stitchers .....	<b>Finnegan Chu, Emily Rohm</b>
Wig Knotters .....	<b>Miguel Armstrong, Jennifer Lightfoot</b>
Barber .....	<b>John JayBee Bivins</b>
Electricians .....	<b>Quinn Chisenhall, Josiah Croegaert</b>
Audio Crew .....	<b>Emily Hayman, Vija Lapp</b>

---

## ACCESSIBILITY SERVICES

---

TimeLine is working to make our productions accessible to all patrons. The following are only a few of the services available; we invite you to visit [timelinetheatre.com/accessibility](http://timelinetheatre.com/accessibility) for a complete list of offerings.



### Assistive Listening Devices

TimeLine offers RF assistive listening devices for those who request them. Ask the Box Office and provide an ID to check out a listening device.



### Accessible Seating

Although seating for performances is general admission, accessible seats may be requested for patrons who need specific seating due to disability. If you require accessible seating, please let us know when you place your reservation how we may assist you in finding seats to fit your needs.



### Open Captioning

Open captioning is a text display of words and sounds heard during an event. The display is positioned in such a way that it is open for anyone to see in a particular seating area.

Open captioning is a service primarily provided for people with hearing disabilities who use assistive listening devices, hearing aids, cochlear implants, sign language, and lip reading. It is a service you may choose to use or ignore during the performance.

Upcoming Open Captioned performances are:

- *Trouble in Mind* — Friday, December 9 at 8pm
- *Trouble in Mind* — Saturday, December 10 at 4pm



### Audio Description

Audio description allows patrons who are blind or low vision to access the visual experience of our performances. A live narrator gives verbal descriptions of actions, costumes, scenery, and other visual elements via a handheld device delivered to patrons upon request before the show.

Upcoming Audio Described performances are:

- *Trouble in Mind* — Friday, December 16 at 8pm

If you would like to suggest services that you believe would make our theatre more accessible, please contact Audience Services Manager Kellyn Henthorn at [kellyn@timelinetheatre.com](mailto:kellyn@timelinetheatre.com).

# ABOUT TIMELINE

## OUR MISSION

TimeLine Theatre Company presents stories inspired by history that connect with today's social and political issues. Our collaborative organization produces provocative theatre and educational programs that engage, entertain and enlighten.

From the moment in 1997 that six founders each pitched \$50 to launch this company, TimeLine has worked to become one of Chicago's leading cultural institutions by creating theatre that is more than just a few hours in a seat. Our team of Company Members works collaboratively to present riveting stories that link our past, present, and future—exploring today's social and political issues through the lens of the past and inspiring ourselves to re-imagine tomorrow.



Pat Tiedemann (from left), PJ Powers, and Juliet Hart in TimeLine's inaugural production *SUMMIT CONFERENCE*, 1998.

And the TimeLine experience extends well beyond the stage, encompassing meticulously researched and interactive lobby experiences, opportunities to discuss the show with artists, ways to take action on whatever the art inspires, and more.

It is a mission unique in Chicago, and beyond.

Now celebrating our 26th season, TimeLine has presented 85 productions, including 12 world premieres and 39 Chicago premieres.

Our work has been recognized in Chicago and beyond: TimeLine received the prestigious 2016 MacArthur Award for Creative and Effective Institutions and has been named "Company of the Year" in *The Wall Street Journal* (2010), one of the American Theatre Wing's top 10 emerging professional theatre companies nationwide (2011) and *Chicago* magazine's "Best Theatre" in the city (2011). And we have been honored with 60 Jeff Awards, including an award for Outstanding Production 11 times.



Ayanna Bria Bakari (left) and Jaye Ladymore in the world premiere of Tyla Abercrombie's *RELENTLESS*, 2022.

We work to match artistic excellence with sophisticated business management, and these efforts also have been recognized. TimeLine was the first arts organization to receive the Alford-Axelsson Award for Nonprofit Managerial Excellence of a small company, and we have received the Association for Strategic Planning's Richard Goodman Strategic Planning Award in the Non-Profit category.

For more about TimeLine's history and programs, please visit [timelinetheatre.com](http://timelinetheatre.com)

TimeLine Theatre is a member of the League of Chicago Theatres, Chicago Cultural Alliance, Choose Chicago, the Lakeview East Chamber of Commerce, Uptown Chamber of Commerce, Lakeview's Belmont Theater District, the Chicago Green Theatre Alliance, and Theatre Communications Group (TCG), the national organization for the American theatre.

# LIVING HISTORY PROGRAM



*Living History students in the lobby at a matinee performance of CARDBOARD PIANO, 2019.*

Learning and discovery have always been central to TimeLine's mission, driven by our belief that live performance can connect people and illuminate ideas.

Founded in 2006, TimeLine's Living History Education Program brings that mission to Chicago Public Schools, working with students on creative exercises related to historically inspired stories on TimeLine's stage and beyond.

Living History is an arts integration residency that features curriculum designed to teach theatre skills while fostering the capacity to think creatively, to make connections, and to provide new ways of understanding history and the world around us. Over six to 13 sessions, students explore connections between history, art and their own lives, developing critical thinking and communication skills.

**“It made me feel that I was part of that moment in history.  
As if I was experiencing it firsthand. It made me understand it better.”**

During Living History residencies, TimeLine teaching artists and classroom teachers collaborate on lesson plans that illuminate the themes of the play and their connection to each classroom curriculum. Students work on several scenes from a TimeLine production and are provided with a study guide. They experience visits from the production's actors and dramaturg and attend a student matinee and post-show discussion with the cast.

During the COVID-19 pandemic, Living History revised its play- and field trip-centered residencies to respond to the unique needs of students and teachers who are living through history and looking for ways to express their experiences. The need for partnership, collaboration, and creative problem-solving is more important than ever, and Living History has provided virtual and real-time opportunities to use theater-based exercises to amplify student voices, challenges, hopes, and dreams.

Since its inception, more than 9,000 students have actively explored history through Living History. TimeLine currently partners with nine schools to present the program.

## TIMELINE SOUTH



*Tiffany Fulson (right) with a TimeLine South ensemble member in 2019.*

TimeLine South—a unique arts program that provides teens a safe space for self-expression, creativity, and ensemble building on the south side of Chicago—just celebrated its 5th anniversary, this year in partnership with the Reva and David Logan Center for the Arts. Offered free of charge for six weeks during the summer, TimeLine South promotes leadership in the arts and introduces teens to the idea that theatre can also be a vehicle for social justice.

Major supporters of Living History include Crown Family Philanthropies, Joseph & Bessie Feinberg Foundation, Lloyd A. Fry Foundation, John and Jessica Fullerton, Robert and Eleanor Meyers, Stanley and Vivian Nitzberg, Polk Bros. Foundation, Walder Foundation, and multiple anonymous contributors, as well as the donors to TimeLine's Annual Fund and Step Into Time gala. The growth of TimeLine South was supported over multiple years by Anita Samen and David Follmer in memory of their son, Daniel Samen Follmer. TimeLine South is currently sponsored by Walder Foundation.

---

# COMPANY MEMBERS

---



*Company Members are the artistic leaders of TimeLine Theatre Company, working collaboratively together to shape the artistic vision and choose the programming for the organization.*

Tyla Abercrombie | Will Allan | Nick Bowling | Janet Ulrich Brooks  
Behzad Dabu | Charles Andrew Gardner | Lara Goetsch  
Juliet Hart | Anish Jethmalani | Mildred Marie Langford | Mechelle Moe  
David Parkes | Ron OJ Parson | PJ Powers | Maren Robinson

---

# ASSOCIATE ARTISTS

---

*TimeLine's Associate Artists have made enormous contributions to the work on TimeLine's stage, and they also have been leaders off stage, making the company a better place to work and serving as ambassadors in the community. The group plays an important role in shaping TimeLine's artistic growth.*

Jared Bellot | Brian Sidney Bembridge | Eva Breneman | William Brown | Aaron Carter  
Andrew Carter | Louis Contey | Charles Cooper | John Culbert | Mikhail Fiksel  
Megan Geigner | Dennis William Grimes | Terry Hamilton | Andrew Hansen  
Jerod Haynes | Josephine Kearns | Kymberly Mellen | Danica Monroe | Mike Nussbaum  
Keith Parham | Andre Pluess | Collette Pollard | Mark Richard | Chris Rickett  
Kimberly Senior | Demetrios Troy | Mike Tutaj | Ann Wakefield | Alex Weisman

---

# PLAYWRIGHTS COLLECTIVE

---

*TimeLine has an ongoing commitment to developing the work of established as well as emerging playwrights. The Playwrights Collective, founded under the leadership of Ben Thiem, offers a supportive environment over multiple years for a group of Chicago-based playwrights to develop new plays that are inspired by history and explore the social and political events of today.*

## **2013 - 2016 (Inaugural) Collective**

Alice Austen | John Conroy | Emily Dendinger  
Frances Limoncelli | Susan McLaughlin Karp | Brett Neveu

## **2017 - 2018 Collective**

Tyla Abercrombie | Will Allan | Maureen Gallagher | Calamity West

## **2020 - 2021 Collective**

Dolores Díaz | Kristin Idaszak | Osiris Khepera | David Rhee

---

# BOARD OF DIRECTORS

---

John Sterling, *President* | Anne Voshel, *Vice President*  
Karen B. Case, *Secretary* | Brian Douce, *Treasurer*

Kate Hurckes Arias | J. Robert Barr | Michelle T. Boone | Philip E. Cable | Mica Cole  
JoAnne Dobrick | Lawrence Gill | Sondra Healy | Anish Jethmalani | Alvin Katz  
Michael J. Kennedy | Eileen LaCario | William A. Obenshain | Susan A. Payne | PJ Powers  
Maridee Quanbeck | Matthew R. Reilein | Ivan Rodriguez | Mitchell A. Sabshon  
Lolita Sereleas | Anne Stockton | Richard G. Weinberg | Constance L. Williams

---

## PRESIDENT'S ADVISORY COUNCIL

---

Alan M. Bell | Amina Dickerson | Margie Korshak Goodman | Toi Hutchinson | Debbie Siegel

---

## STAFF

---

**PJ Powers, *Artistic Director* | Mica Cole, *Executive Director***

### ARTISTIC

Nick Bowling  
*Associate Artistic Director*  
Maggie Fullilove-Nugent  
*Production Manager*  
Maren Robinson  
*Resident Dramaturg*

### LIVING HISTORY

Juliet Hart  
*Director of Living History*  
Tiffany Fulson  
*Artistic Producer of  
Innovative Partnerships*  
Mary T. Christel  
*Curriculum Consultant*  
Jocelyn Arrieta  
Charles Andrew Gardner  
Marcus D. Moore  
Lexi Saunders  
*Teaching Artists*

### ADMINISTRATION

Elizabeth K. Auman  
*Director of New Home  
Development*

Dan McArdle  
*General Manager*  
Elizabeth Tyska  
*Bookkeeper*

### DEVELOPMENT

Chelsea Smith  
*Director of Major Gifts*  
Leah Taylor  
*Development Coordinator*

### MARKETING

Lara Goetsch  
*Director of Marketing  
and Communications*  
Jenny Lynn Christoffersen  
*Marketing and  
Communications Associate*  
Emma Schoenfelner  
*Marketing and  
Communications Assistant*

### AUDIENCE SERVICES

Kellyn Henthorn  
*Audience Services Manager*  
Anika Waco  
*Front of House Manager*

Sam Hurwitz  
*Audience Services Assistant*  
Katie Bevil  
Monét Felton  
Jules Holynski  
Eva Nyman  
Cara Peterson  
River Rose  
*Audience Services Staff*

---

### CONSULTANT SERVICES

Jay Kelly PR  
*Public Relations*  
Mann Weitz  
and Associates LLC  
*Audit Services*  
Sterling Strategies  
*Strategic Management*

### VOLUNTEERS

The Saints  
*Ushering*

# IT'S TIME: THE CAMPAIGN FOR TIMELINE'S NEW HOME



## CREATING A NEW CULTURAL ASSET FOR CHICAGO, IN UPTOWN.

TimeLine is laying the foundation for our next era. After 25 years of adapting within rented facilities, we're establishing a purposefully built theatrical hub in Chicago's vibrant Uptown neighborhood. Far more than just a theatre, this inviting and accessible facility will be a welcoming gathering space for entertainment, education, and community engagement.

Joining other venerable performance venues in the historic Uptown Entertainment District, TimeLine's new home will feature:

- An intimate and flexible 250-seat black box theatre that can be reimagined for every show
- Exhibit galleries that enhance the production experience
- A dedicated Education and Engagement room for student and community programming
- Expanded social spaces, including a bar and café open day and night
- Office, rehearsal, and production space for staff and artists
- Plus opportunities for future expansion, and much more!

Join us in taking this bold step together toward a new home, where everyone is welcomed and where great artistry collides with topics relevant to today's social and political issues.

**"It's Time to create a space to grow and innovate  
... a space where past and present intersect and where collaboration  
and togetherness will lead us to a better future."**

— Artistic Director PJ Powers

# IT'S TIME

## MAKE HISTORY WITH US

This once-in-a-lifetime project is a private and public funding partnership. For more information about how you can support this special campaign, please contact Chelsea Smith, Director of Major Gifts, at [chelsea@timelinetheatre.com](mailto:chelsea@timelinetheatre.com) or 773.281.8463 x16.

Explore more about this thrilling project—including interior and exterior design renderings—online at [timelinetheatre.com/its-time](http://timelinetheatre.com/its-time).



# IT'S TIME: THE CAMPAIGN FOR TIMELINE'S NEW HOME

TimeLine is grateful for the support and confidence shown by the investors in the campaign for our new home.

## **\$1 MILLION AND ABOVE**

Anonymous  
Abe and Ida  
Cooper Foundation  
Joseph and Bessie  
Feinberg Foundation  
Jim and Karen Frank  
Peter and Alicia Pond  
Forum Fund

### *Contributing members include:*

Diane Dean, Jim and Karen Frank, Marvin and Judy Herb, Richard and Debbie Jelinek, John and Judy Keller, Jim Leider, Barry MacLean, Andy McKenna, Andrew and Jeanine McNally, David Moscow, Michael and Suzanne Moscow, and Gordon and Carole Segal

## **\$250,000 - \$999,999**

Crown Family Philanthropies  
Mary and Bruce Feay  
Brenda and James Grusecki  
Sonia T. Marschak  
Bill and Penny Obenshain  
Pritzker Traubert Foundation  
The Van Dam Charitable Foundation  
Anonymous (3)

## **\$100,000 - \$249,000**

Anonymous  
Christine Albright and Lawrence Gill  
Gil and Kate Hurckes Arias  
Judith Barnard and Michael Fain  
Douglas Bradbury  
Rita and John Canning  
Richard and Ann Carr  
Joan M. Colmar and  
Mitchell A. Sabshon  
Daniel R. Cyganowski, in memory  
of Dr. Carol K. Cyganowski  
John and Jessica Fullerton  
David Hiller  
Ronald B. Johnson  
Jane P. Nerison  
Maridee Quanbeck and Jared Kaplan  
Rhonda Rochambeau and  
Larry Shulman  
Timothy C. Sherck  
Debbie Siegel and Bob Altman  
John Sirek and Colleen Loughlin  
John and Eileen Sterling  
TAWANI Foundation  
Diane and Richard G. Weinberg

**\$25,000 - \$99,999**  
Anonymous (2)  
Bob and Trish Barr  
John A. Cable Foundation  
Karen and Jay Case  
Joyce Chelberg  
William Fritz and Tom Gosline  
Barbara Goodman and Seth Weinberger  
Jack and Sandra Guthman  
Dani Jachino  
Alvin and Elizabeth Katz  
Eileen LaCario and Tony D'Angelo  
Elaine and Donald Levinson  
Edward Malone and Kristina Entner  
Adrienne Meisel and Rand Sparling  
Erica C. Meyer  
Alex and Jen Moeller  
Susan A. Payne  
C. James and Karen Prieur  
Anita Samen and David Follmer, in  
memory of Daniel Samen Follmer  
and in honor of Sarah Good  
Follmer and Max Robison Follmer  
Tom and Pam Sheffield  
Janet Carl Smith and Mel Smith  
Thomas and Renée Zipprich

**UP TO \$24,999**  
Anonymous (2)  
Mary and Richard Auman  
Randy and Lorraine Barba  
Marcia Baylin  
Kathleen M. Bell  
Henry and Leigh Bienen  
Michelle T. Boone  
William and Mary Kay Bowling  
Nancy Bradt and Laurence Lewis  
Edward J. and Patricia Brown  
Edward and Barbara Burnes  
James M. Gill and Fran Chessler  
Lisa Coburn  
Deborah Cohen and Tom Silfen,  
in honor of Kate and Gil Arias  
Susan and Jim Colletti  
Beverly Ann and Peter Conroy  
James and Patricia Corirossi  
Steven and Michelle Cucchiaro  
Char and Larry Damron  
Janet Davies and Jeffrey Preston  
Kassie Davis and Bruce Beatus  
Patty L. Delony  
Amina Dickerson and Julian Roberts  
Leonora Dickson  
JoAnne Dobrick  
Brian and Marcella Douce  
Carolyn Fay and Providence Benedict  
Elizabeth Foster  
Gloria Friedman, in honor  
of Bernie Holicky  
Paula A. Golden  
Shelley Gorson and Alan Salpeter

Anthony and Susan Grosch  
Gregory and Elizabeth Hahn  
Trish and Harp Harper  
Thomas and Karen Howell, Jr., in  
honor of Bill and Penny Obenshain  
Julia and Robert Jackson  
Gary T. and Susan Johnson  
Michael and Kathryn Kennedy  
Neil and Diana King  
Judy O. Kirk  
The Larrea Family  
Linda Legner  
Linda Loving and Richard Aaronson  
Thad and Lisa Malik  
Nancy Malitz  
David Manilow  
Jeffrey Mono and Steve Greenberg  
Paul J. Much  
Jean and Jordan Nerenberg  
Stanley and Vivian Nitzberg  
Chris and Prill Nuzt  
Becky and Ed O'Connell  
Timothy Ortmann  
Jean Perkins and Leland Hutchinson  
Glen and Beth Prezembel  
Merrilee and Richard Redmond,  
in honor of Peter and Alicia Pond  
Matt Reilein and Lizzy Whitehorn  
David Rhee  
Elizabeth and Tobin Richter  
Helen and Richard Rivkin  
Marjorie Rogasner, William Irons,  
and Julie Irons  
J.T. Rogers and Rebecca Ashley  
Kathleen Ruhl  
Anne and Barry Sabloff  
Jane Nicholl Sahlins  
Jane Santogrossi  
Ann Marie and Christopher Saternus  
Laurence Saviers and Kurt Jolly  
Libby Savner  
Alice and Bob Schloss  
Bobbie and Vernon Schultz  
Barry Sears and Kathy Rice  
Adele Simmons  
Louise K. Smith  
Nikki and Fred Stein  
Anne and Rich Stockton  
Greg and Anne Taubeneck  
Thomas and Amata Spencer  
Fund for the Arts  
Amy and Tony Volpe  
Merrilee and John Waldron  
Kristin Walter  
Mr. John S. White  
Marc and Tracy Whitehead  
Matilda Wilhoite  
Mary Kay Wysham and  
Stephen Wysham

# CORPORATE, FOUNDATION & GOVERNMENT SUPPORT

TimeLine is proud to recognize the corporations, foundations and government entities that generously support our general operations and Living History Education Program. This list recognizes donations and pledges received October 13, 2021 through October 13, 2022.



Abe and Ida Cooper  
Foundation

Crown Family  
Philanthropies

Joseph & Bessie  
Feinberg Foundation

LLOYD A. FRY  
FOUNDATION



Laughing Acres  
Family Foundation

MACARTHUR  
The John D. and Catherine T. MacArthur Foundation  
PRINCE  
CHARITABLE TRUSTS

Carol Oppenheim and  
Jerome Lamet  
Charitable Fund

POLK BROS FOUNDATION  
a foundation for chicago families



THE SHUBERT  
FOUNDATION INC.

WALDER  
FOUNDATION

## \$50,000 and above

City of Chicago Department of  
Cultural Affairs & Special Events  
The MacArthur Fund for Culture,  
Equity, and the Arts at Prince  
The Shubert Foundation  
U.S. Small Business Administration  
Walder Foundation

## \$40,000 - \$49,999

Joseph and Bessie Feinberg  
Foundation

## \$30,000 - \$39,999

Crown Family Philanthropies  
Lloyd A. Fry Foundation  
Polk Bros. Foundation

## \$20,000 - \$29,999

Bayless Family Foundation

## \$10,000 - \$19,999

Abe and Ida Cooper Foundation  
Illinois Arts Council Agency  
Laughing Acres Family Foundation  
National Endowment for the Arts  
Pritzker Traubert Foundation

## \$1,000 - \$9,999

Carol Oppenheim and  
Jerome Lamet Charitable Fund  
Daniel H. Lome Foundation  
Four Friends Foundation  
Heartland Health Centers  
Irving Harris Foundation  
John A. Cable Foundation

## Up to \$999

Actors' Equity Foundation Inc.  
The Saints: Volunteers for the  
Performing Arts

## Employer Matching Gifts

*These companies have matched  
their employee's contributions.*

Blackbaud Giving Fund  
CDW  
Gannett Foundation  
Illinois Tool Works  
JP Morgan Chase  
Prudential Financial Inc.

# HISTORY MAKERS

We are honored to recognize TimeLine's History Makers—supporters who make tax-deductible donations of \$1,000 and more annually to support TimeLine's general operations. History Makers help TimeLine continue the Chicago tradition of companies that started small, dreamed big, and developed into prominent arts organizations. Members of the History Makers Society receive exclusive privileges designed to bring our most generous individual supporters closer to the art they make possible at TimeLine. This list includes donations and pledges received October 13, 2021 through October 13, 2022.

## **Visionary Circle**

**\$25,000 - \$49,999**

Anonymous  
Brenda and James Grusecki  
Forum Fund at the Chicago  
Community Foundation  
W.R. and Sandra Manteuffel  
Robery M. Meyers and  
Eleanor L. Meyers  
Diane and Richard G. Weinberg

## **Innovators Circle**

**\$15,000 - \$24,999**

Anonymous  
Christine Albright and Lawrence Gill  
John Bierbusse  
Bill and Penny Obenshain  
Maridee Quanbeck  
Anne Voshel

## **Benefactors Circle**

**\$10,000 - \$14,999**

Judith Barnard and Michael Fain  
Karen and Jay Case  
Randy Fifield  
David Hiller  
Stanley and Vivian Nitzberg  
Susan A. Payne  
Peter and Alicia Pond  
Rhonda Rochambeau and  
Larry Shulman  
John Sirek and Colleen Loughlin

## **Leadership Circle**

**\$5,000 - \$9,999**

Joyce E. Chelberg  
Joan Colmar and Mitchell Sabshon  
JoAnne Dobrick  
Brian and Marcella Douce  
Mary and Bruce Feay  
Dawn and Rick Gray  
Gayle H. and Ken Jensen  
Ronald B. Johnson  
Kathryn and Michael Kennedy  
Burton X. and Sheli Z. Rosenberg  
Christopher and Ann Marie Saterнус  
David and Judith Sensibar  
Timothy C. Sherck  
Debbie Siegel and Bob Altman  
John and Eileen Sterling  
Mary Stowell and Jim Streicker  
Dennis Zacek and Marcelle McVay

## **Ambassadors Circle**

**\$2,500 - \$4,999**

Bob and Trish Barr  
Philip Cable and Jennifer Siegenthaler  
Kathryn Clarke and Bill Kaplan  
James M. Gill and Fran Chessler  
Jack and Sandra Guthman  
Trish and Harp Harper  
Daneen Jachino  
Joan Crawford Mattson  
Jean and Jordan Nerenberg  
Sandra Newman  
Dan and Terry Pramuk  
C. James and Karen Prieur  
Joe and Natalie Romano  
David Rotholz and Kathy Paddor-Rotholz  
Anne and Barry Sabloff  
Libby and David Savner  
Stephanie B. and Gerald Smith  
Anne and Richard Stockton  
Greg and Anne Taubneck  
Kirk Twiss and Connie Fairbanks

## **Investors Circle**

**\$1,000 - \$2,499**

Anonymous (2)  
Cameron Avery and Lynn Donaldson  
Mr. Edgar H. Bachrach  
Kyle and Marge Bevers  
Judith S. Block  
Shaun and Andy Block  
John and Claudia Boatright  
Benjamin and Kara Bowling  
Mimis Cohen and Andrea Biel-Cohen  
James and Susan Cohn  
Sue and Jim Colletti  
Jeff Colman and Nancy Loeb  
Judith Cothran  
Amina Dickerson and Julian Roberts  
Richard and Vicki DuFour  
Jim Foley  
Barbara French  
Carla J. Funk  
Malcolm and Judy Gaynor  
Camillo and Arlene Ghiron  
Lara Goetsch  
Barbara Goodman and Seth Weinberger  
Joan and Guy Gunzberg  
Gregory and Elizabeth Hahn  
Bernard and Barbara Hart

Juliet Hart and Mark Onuscheck  
Marty Hauselman  
Todd Hensley and Lizanne Wilson  
Lina Flores Hilko  
David and Sharon Kessler  
Kristine Kinder  
Neil and Diana King  
Carolyn and Gordon Kirk  
Paul and Nancy Knapp  
Robert and Marcia Kozelka  
Peter Kuperberg  
Eileen LaCario and Tony D'Angelo  
Donna LaPietra and Bill Kurtis  
Thomas S. Larance  
Lynn Lockwood Murphy  
Kim Lopez  
Linda Loving and Richard Aaronson  
Edward Malone and Kristina Entner  
Kristin Bowling Manning  
and Eamon Manning  
Sylvia and Larry Margolies  
Scott McCausland  
Tom and Kathy Meenaghan  
Laurie and Martin Merel  
Barbara and Jonathan Moss  
Julia Navarre  
Jane P. Nerison  
Cian O'Mahony and Lolita Sereleas  
Glen and Beth Prezembel  
Rafael San Juan  
Steve and Missy Ravid  
Mark Richard and Kelly Nespor  
Maureen Riordan  
Ned and Marsha Robertson  
Kathie Romines  
Laurence Saviers  
Thomas and Pamela Sheffield  
Lisa Skolnik  
Christine A. Slivon  
Janet Carl Smith and Mel Smith  
Barbara Spoerl  
Janet Surkin and Robert Stillman  
John Tielsch and Deborah Garber  
Bryan Vanderhoof  
Magnes Welsh  
Katherine Wolf  
Mary Kay Wysham and  
Stephen Wysham  
John and Evonne Yonover  
Helen Young

# INDIVIDUAL GIVING

We are honored to recognize the following individual donors for their tax-deductible gifts in support of TimeLine Theatre. This list recognizes donations and pledges received October 13, 2021 through October 13, 2022. We regret that due to space limitations we are unable to list donors of up to \$99. Please accept our heartfelt thanks and know that every gift makes a difference!

## \$500 - \$999

Anonymous (2)  
Jeannie Affelder and  
Jeff Weissglass  
Sandra Allen and Jim Perlow  
Howard I. Aronson  
Mary and Richard Auman  
Kelly Becker  
Ken Belcher and Sandra Ihm  
Fredrick N. Bates and  
Ellen J. Benjamin  
Kay Berkson and  
Sidney Hollander  
Andy Bezaitis  
Jerry and Kathy Biederman  
Joan and Hank Bliss  
Benita Boettner  
Mary Kay Bowling and  
Emma Brainard  
Douglas Bradbury  
JoAnne Dobrick  
Andrew and Kate Bushey  
Bruce and Lisa Cohen  
Marti DeGraaf and Toby Mack  
Dolores Diaz  
Ali and Laura Fatemi  
Marcia Flick  
Rebecca Folds and  
Adnan Rukieh  
Elaine Foss  
Mr. and Mrs. James J. Glasser  
Ethel and Bill Gofen  
Interconnect Production  
Services  
Sandy Guettler  
Stephen C. and Jo Ellen Ham  
Kathy Hewitt and Anne Fay  
Ms. Patricia Hurley  
Bob and MaryBeth Jirgal  
Mike and Liz Kohler  
Mary Sue Lyon  
Amy Matheny and  
Kiki Haralambides  
Stella Moore  
Corinne S. Morrissey  
Barbara Moser  
Paul Oetter  
Bridget O'Keefe and  
James Sepich  
Holly Chandler Osburn  
Jean Perkins and  
Leland Hutchinson  
Jeaneane and John Quinn  
Anne and Brent Ray  
Kathy Rice and Barry Sears

Ed and Susan Ritts  
Viki and Tom Rivkin  
Babette Rosenthal  
Mary Ann and Bob Savard  
Roche Schulfer and  
Mary Beth Fisher  
Threshold Acoustics  
Adena Staben  
Charles A. Tausche  
Nia Tavoularis and  
Michael Otte  
Deborah Walters  
Steve and Jackie Wasko  
Roberta and William  
Weinsheimer  
Tom and Linda White  
Dennis Marx  
M. Elizabeth Zeigler

## \$250 - \$499

Anonymous (2)  
Mr. Cedric Antosiewicz and  
Ms. Margaret Gudenas  
Richard and Janice Bail  
Melissa Ballate  
Randolph and Lorraine Barba  
Peggy Bartelstein and  
Bill Gurolnick  
Edward and Elinor Bass  
Dr. Leonard and Phyllis Berlin  
Linda Bierig  
Herb and Lucy Blutenthal  
Deborah H. Holdstein and  
Jay W. Boersma  
Susan Brunstrum  
Buchman Family  
Crystal and Tom Bush  
Linda Camras and  
Jerome Seidenfeld  
William and Doreen Carey  
Jennifer Christakes  
Katherine Crouch  
John and Kitty Culbert  
Jean and David Curtis  
Sara Downey  
Jean and Harry Eisenman  
Carla Feinkind  
Elizabeth Foster  
Judith R. Freeman  
Barbara Gaines  
Paul B. Glickman  
Donald and Kathy Goetsch  
Jill and Brad Gordon  
Julie Graber  
Jacqueline Grandt  
Amy and Jason Green  
Thomas J. Hogan

Donald S. Honchell and  
Susan K. Horn  
Thomas and Karen Howell, Jr.  
Morton and Barbara Jaffe  
Glenn and Patricia Janik  
Brendan and Karmen Keane  
Mark and Mary Ann Kearns  
Colby and Chad Kingsbury  
Dennis Kmiec  
Melissa and Justen Knight  
Carla Knorowski  
Jacqueline C. Kohn  
Norman Kohn and  
Nina Winston  
Judith Kossy  
James R. and Laurel Lannen  
Dr. Paul M. Lisnek  
John M. McCabe  
Robert and Margaret  
McCament  
B. Michael McFarland and  
Richard Murray  
David and Patricia Meyer  
HGA Architects and Engineers  
Thomas O'Brien  
Lynn J. Osmond  
Sandra and Michael Perlow  
Pamela Popielarz  
Chris Kertesz and Lynn Preis  
Jerry Proffit  
Charles Racic and  
Barbara Ellis-Racic  
Helen and Richard Rivkin  
Dr. Robert Henry  
Alice and Robert Schloss  
Beth Silverman  
Louise K. Smith  
James Solomon  
Oehme and Winslow Soule  
Ann Speltz and Stephen Fedo  
Nancy Tani  
Elizabeth Teich  
Denise and Rheel Turcotte  
David and Bonita Turner  
Mike and Linn Ann Tyrrell  
Barbara Ulrich  
Al Wayne and Lynne Copp  
Elfriede Wedam  
Kimberly and  
Thomas Williamson  
Linda Woloshin  
Mark and Margie Zivin

## \$100 - \$249

Anonymous (4)  
Tyla Abercrombie  
Marlene D. Adsit  
Rebecca Ahern  
Richard and Jill Almeida  
Judith Anderson  
Marjorie Anderson  
Wendy Anker  
Marivel Ansera  
Cinda Axley  
Peggy Bagley and Rabbi  
Douglas Goldhamer  
Daphne Baille  
Daniel A. Balsam  
Meredith Banta  
Colleen and Charles Batcheller  
Carolyn J. Belden  
Kathleen M. Bell  
Daniel Bender  
William and Susan Berg  
Roy Bergstrom  
Zina L. Berman  
Marcia Bernstein  
Susan Bernstein  
Sandra Blau  
Ron and Barbara Blumenthal  
Michelle T. Boone  
Jane Boyle  
Nancy Bradt and Laurence Lewis  
Karen Brenner  
Renee Brin  
Cynthia Brown  
Maxine Brown  
Ralph and Rona Brown  
Kathy and Rich Brummet  
Karen A. Callaway  
Linda Catalano  
Norine Chiu  
Maria Cimperman  
Loraine Edwards and Ruth Clark  
Janet Cohen  
Thomas A. Corfman and  
Carol Ann Brook  
Betsy Covell  
Isabel and Bob Curley  
Gail and Norm Cutler  
Gianine DeFrancesco  
Robert Doerack  
Dorie Domeracki  
Ronald Duda  
Art and Lili Duquette  
Arthur Elstein  
Kathy Engert  
Miriam Ex  
Marjorie Fahrenbach  
Jay and Lisa Fisher

# INDIVIDUAL GIVING

Greta Wiley Flory  
Yvonne Fogerty  
Sarah Follmer  
Jeanne Fujimoto  
Mark Gastineau  
Linda Gels  
Norden Gilbert and  
Ben Thomas  
Richard and Andrea Ginsburg  
Barbra Goering  
Richard Goetsch  
Karen Goozner  
Susan and Peter Gray  
Susan and Anthony Grosch  
Susan Haimes  
Franca Harrington and  
Vern Broders  
Judith S. Hausner  
Annlee Herbstman  
Donna J. Higgins  
Suzanne High  
Ann Courter and  
Norman M. Hirsch  
Stephanie Hirschboeck  
Cynthia Ho  
Sherry Hoel  
James Holzhauer  
Michael Hruskocy  
Jill Hurwitz and  
Harvey Popolow  
David and Beth Inlander  
Andrew Jarosz  
Jim and Pat Jocius  
Karen B. and  
Jerry D. Johnson  
Lyn Sue Kahng  
Sydney Kalet  
Antje Kastner-Panya  
Kenneth Kirkland

Mary Kivell  
Allan and Tanya Klasser  
John Knight  
Dr. Jeffrey A. Koblish  
Steve Kratochwill and  
Martha Erpelding  
Erzsébet Kuettnér  
Elizabeth A. Kurman  
Stephen and Maria T. Lans  
Kathleen Larkin  
Elizabeth and Scott Lassar  
Christine Lehmann  
Hillary Leisten  
Laura Lerner  
Debbie J. Lessin  
Allison and Brad Levin  
Karen Lewis  
Roselind Lindau  
Carol and David Liner  
Margaret Loisel and  
Robert Marshall  
Karen Nisley Long  
Ray Macicka and  
Tracy Heilman  
Laura Manteuffel  
Katherine Markham  
Shawn Mathis  
Richard McCann  
Anthony and Dana McKinney  
Suzet McKinney  
Melissa Mickelberry  
Priscilla Mims  
The Moczulewski Family  
Mechelle Moe  
Jeffrey Mono and  
Steven Greenberg  
Dr. and Mrs. Martin Mozes  
Sheila Murphy and  
Patrick Racey

William and Leslie Nelson  
Susan Noel  
Nanette Norton and  
Jim McMasters  
Lanty and Rita O'Connor  
Leslie Osterberg  
David and Carole Perlman  
Nancy Taylor Porter  
Maureen Powers and  
Matt Krause  
PJ and Shelley Powers  
Tom and Donna Ray  
Rhoda Reeling  
Jenny Ricciardi  
David and Donna Richert  
Elizabeth D. Richter  
Thomas Riley  
Joanna Riopelle  
Robert and Helga Rothweiler  
Carolyn O. Rusnak  
Judith Sagan  
Edward J. Salopek, MD  
Jerry Salzberg  
Renee Schleicher  
Karen and Frank Schneider  
Morton and  
Marianne Schreiber  
Jean Schwartz  
Steven Sheely and  
Darka Papushkewych  
Toni S. Smith  
Neil and Elaine Smith  
Jack Spicer and  
Debra Hammond  
Caryl Steinberg  
Terrie Stengel and  
Frederick Sierles  
Corinne Sterling  
John Stoetzel

Jim Stortzium  
Drs. David and  
Pinky Stuhldreher  
William and  
Mary Kay Stuhldreher  
Ayisha Tahir  
Ari and Orly Telisman  
Larry and Alison Thomas  
Tommy and Connie Thompson  
Sheila Tiedemann  
Merle and Thomas Tresser  
Mark Ulrich  
Sarah Vanderwicken  
Donna Vos  
Janet Walters  
Audrey Wasilewski and  
Lyle Knause  
Lynne and Fred Weber  
Dennis Wentz, M.D. and  
Anne Colston Wentz, M.D.  
Dr. Catherine Whitcomb and  
R.J. Hinz  
Lani and Christian Wilhite  
Matilda Wilhoite  
Ann Wise  
Valerie Woods  
Roberta Zabel  
Nan and Lawrie Bloom  
Thomas and  
Suzanne Zipprich

*TimeLine is grateful for every contribution received. We regret that due to space limitations we are unable to list donors of up to \$99. Please accept our heartfelt thanks and know that every gift makes a difference!*

MacArthur  
Foundation

TimeLine Theatre Company is a recipient of the prestigious  
2016 MacArthur Award for Creative and Effective Institutions.

## OUR COMMITMENT

***We strive to keep our donor lists accurate and up-to-date at all times.  
Please contact Leah Taylor at 773.281.8463 x18 with any questions or concerns.***

TimeLine is committed to helping all our patrons understand the full impact of their support. All non-profit organizations are products of and for the communities they serve. Without the support of our dedicated community we would not exist. We pledge to do all we can to make sure that every dollar we receive is invested wisely. To do this, it is crucial for us to focus on what makes TimeLine unique—our mission to produce plays that explore today through the lens of the past and spark conversation with you, our audience, about the times we live in. We want TimeLine to be a place that encourages thought, emotion, and discourse, and that can only happen with your involvement.

---

# STEP INTO TIME GALA

---

We are honored to recognize the following sponsors, table and ticket buyers, and auction prize purchasers who contributed to TimeLine's annual Step Into Time benefit, which took place on March 11, 2022. TimeLine is also grateful to those who purchased raffle tickets to support Step Into Time. We regret that due to space limitations, we are unable to list everyone who contributed. Please accept our heartfelt thanks and know that your participation made a difference!

Joseph & Bessie

**Feinberg Foundation**

**BROADWAY  
IN CHICAGO**



## **\$25,000 Lead Sponsors**

Joseph & Bessie Feinberg Foundation  
Bill and Penny Obenshain  
Richard and Diane Weinberg

## **\$10,000 Gold Sponsors**

Christine Albright and Larry Gill  
Broadway In Chicago  
Maridee Quanbeck  
Colleen Loughlin and John Sirek

## **\$7,000 Silver Sponsors**

CIBC  
Joan Colmar and Mitchell Sabshon  
Cian O'Mahony, Lolita Sereleas,  
Anne and Richard Stockton  
Susan A. Payne  
Debbie Siegel and Bob Altman  
Anne Voshel

## **\$5,000 Bronze Sponsors**

Michelle Boone  
Bulley & Andrews, LLC  
Philip Cable and Jennifer Siegenthaler  
JoAnne Dobrick  
Brian and Marcella Douce  
Dawn and Rick Gray  
Sondra Healy  
Alvin and Elizabeth Katz  
Kathryn and Michael Kennedy  
John and Eileen Sterling  
Thomas and Renée Zipprich

## **Ticket Buyers (\$500 per ticket)**

Anonymous  
Jeannie Affelder and Jeff Weissglass  
Melissa M. Ballate  
Jerry and Kathy Biederman  
Mary Kay Bowling and  
Emma Brainard  
Sue and Jim Colletti  
Marti DeGraaf and Toby Mack  
Dolores Diaz  
Mark Onuscheck  
Todd Hensley  
David Hiller  
Thomas J. Hogan  
Dani Jachino  
Judith Kossy  
W.R. and Sandra Manteuffel  
Bridget O'Keefe and James Sepich  
Threshold Acoustics  
Stephanie B. and Gerald Smith  
Barbara Ulrich

## **Auction Purchasers**

Kathleen and Leigh Allan  
Leslie Allen  
Andy Bezaitis  
Kathy and Rich Brummet  
Karen and Jay Case  
Lisa Coburn  
Joan Colmar and Mitchell Sabshon  
Katherine Crouch

Leonora Dickson  
Nic Dimond and Keely Vasquez  
Brian and Marcella Douce  
Stephen Duke  
Joseph & Bessie Feinberg Foundation  
Morag Fullilove  
Terri Garvin  
Neil Hackler  
Glenn and Patricia Janik  
Susan and Josh Karp  
Kathryn and Michael Kennedy  
Paul Lazarre and Jennifer  
Ames-Lazarre  
Laura Lerner  
Bill and Penny Obenshain  
Susan A. Payne  
Michelle Prestidge  
Charles Racic and Barbara Ellis-Racic  
Kathleen Redding  
Dr. Sergio and Mary Rodriguez  
Geraldine and Thomas Ryan  
Bob Shelist  
Deborah Shelist  
John Sirek and Colleen Loughlin  
Janet Carl Smith and Mel Smith  
Stephanie B. and Gerald Smith  
Steve and Jackie Wasko  
Benna B. Wilde

---

## IN-KIND DONORS

---

We are pleased to recognize these organizations and individuals who have supported TimeLine through the donation of goods and services valued at \$1,000 or above between October 13, 2021 and October 13, 2022. We regret that due to space limitations we are not able to list in-kind donations valued up to \$999, but please accept our heartfelt thanks and know that every donation makes a difference!

## **\$1,000 and above**

Bill and Mary Kay Bowling Family  
Bulley & Andrews  
Creative Root, The Theatre School  
at DePaul University

Ingrid Bonne Photography  
Eileen LaCario  
Thad and Lisa Malik  
Rany Management, LLC  
The Ritz-Carlton, Chicago

Sanders Fine Portraits  
Anne and Richard Stockton  
John Yonover  
M. Elizabeth Zeigler  
Renée and Tom Zipprich

# YOUR ROLE

WHAT IF YOU ONLY HEARD A MONOLOGUE  
NOT A DIALOGUE?

WHAT IF THE ACTORS SAID  
EVERY OTHER WORD ...  
... **OR SKIPPED EVERY OTHER LINE?**

WHAT IF THE PLAY WAS **FORCED**  
**TO END HALFWAY THROUGH?**

THERE WOULD BE NO CHANCE  
TO COMPLETE THE STORY.  
**NO CHANCE TO MAKE HISTORY.**

Your ticket purchase is only half the story. TimeLine Theatre—like our peers in Chicago's vibrant community of not-for-profit theatres—depends upon the support of patrons like you to thrive.

Ticket sales cover about 45% of our total income during the season. Donations are vital to ensuring TimeLine's continued success. Without the generosity of our dedicated supporters, we would not exist!

# WE NEED YOUR SUPPORT.

Donate online today:

**[TIMELINETHEATRE.COM/DONATE](https://www.timelinetheatre.com/donate)**

Consider a recurring gift for continuing impact!

*TimeLine Theatre Company is a 501 (c)(3) Not-for-Profit organization.  
Your gift is tax-deductible to the extent allowed by law.*

**FOR ANYONE AGE**

**18 TO 35**

MyLine is TimeLine's low-price ticket program. It's free to join and gets you exclusive access to \$15 tickets for all Time-Line shows, plus invites to great parties!

**LEARN MORE AND SIGN UP AT  
TIMELINETHEATRE.COM/MYLINE**

*Membership is FREE.  
But you must sign up to become a member.*

**TimeLine**  
Theatre Company

**MY**  
FOR AGES 18-35  
**LINE**